

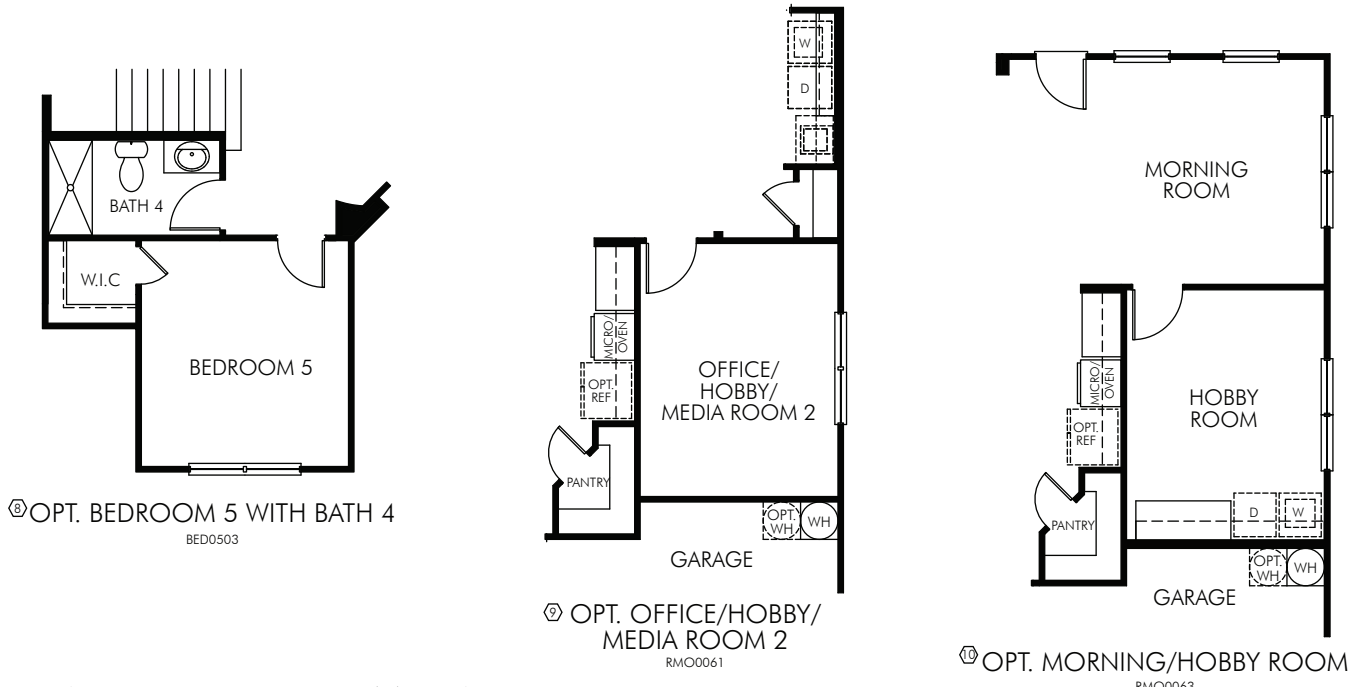
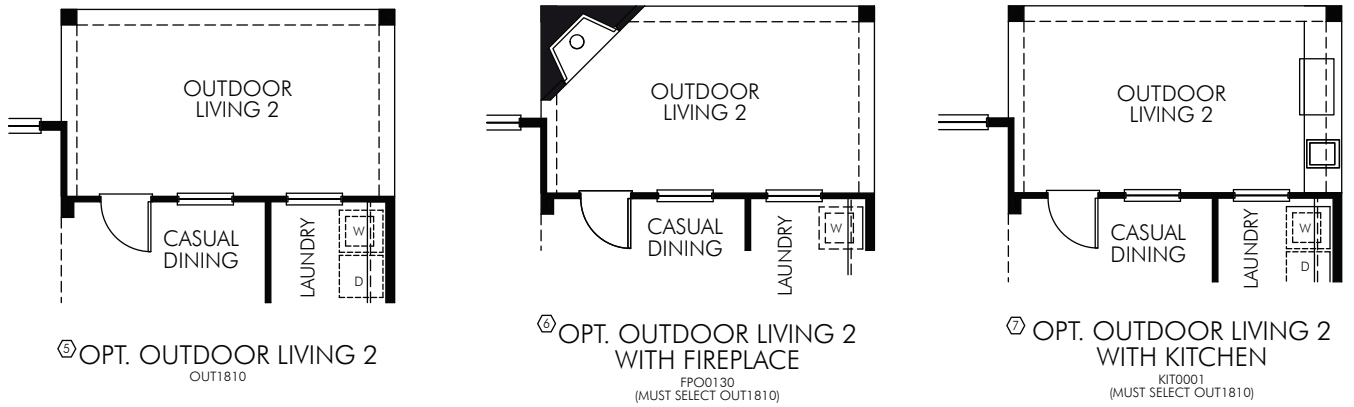
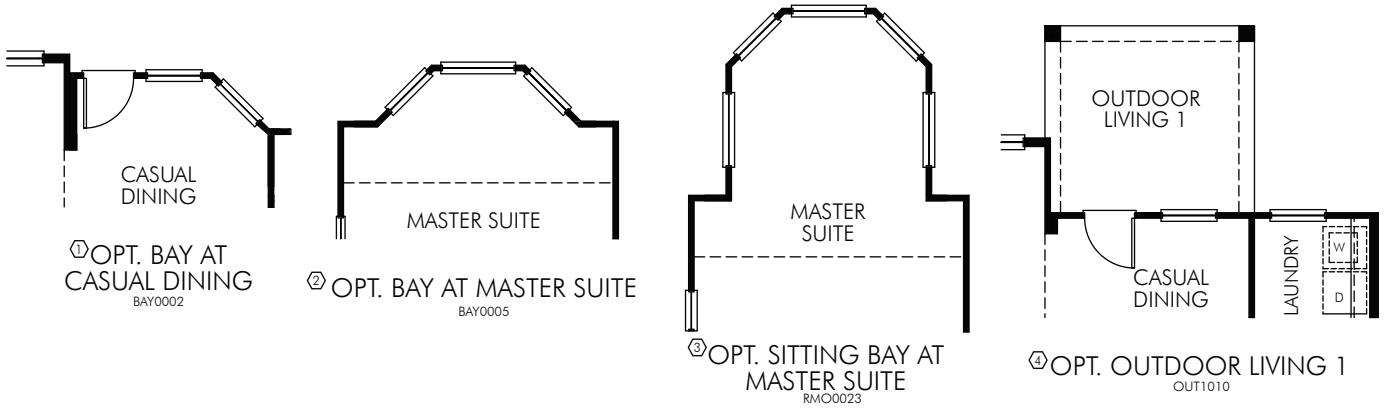
FIRST FLOOR

THE CRIMSON • PLAN 5329

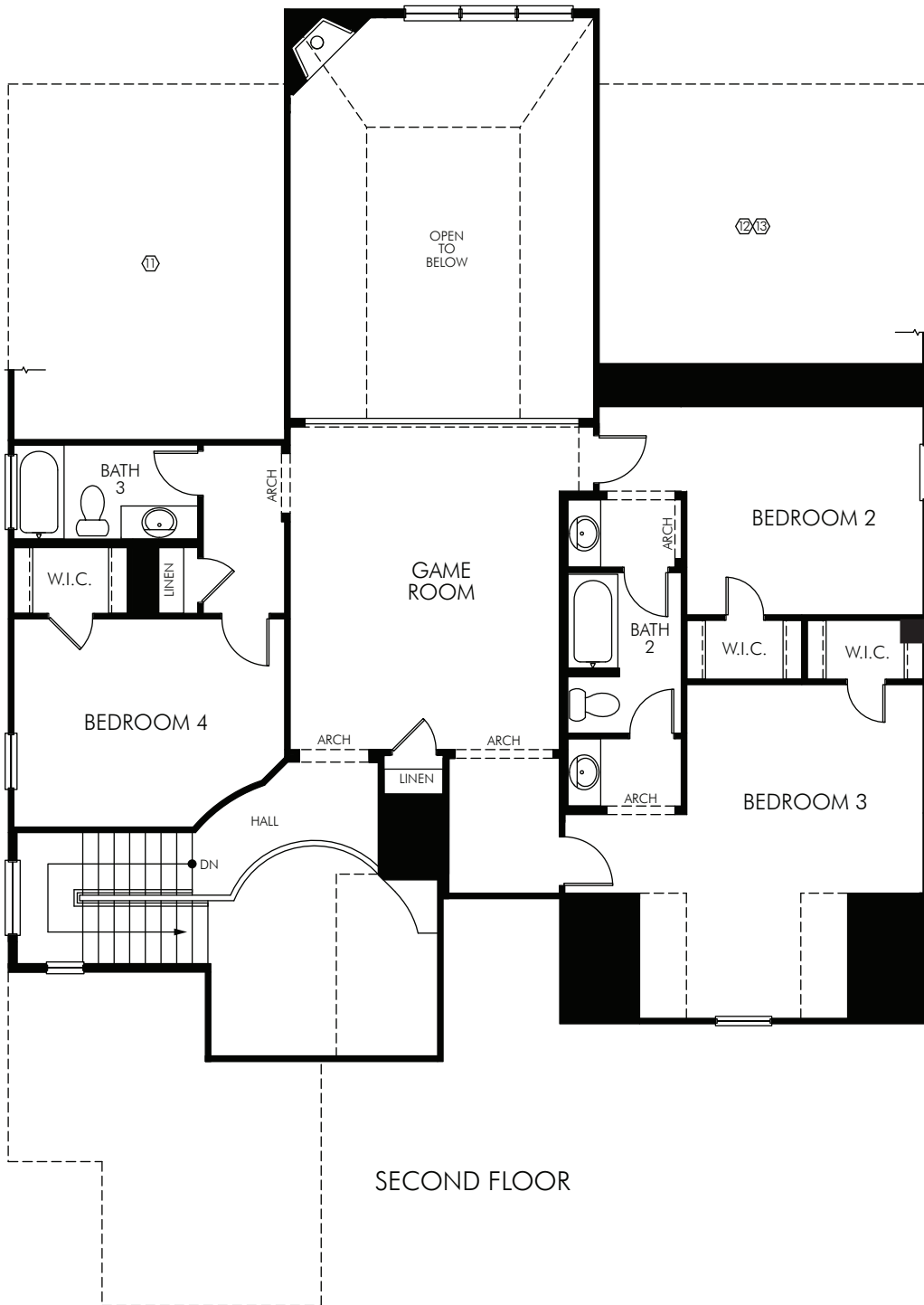
3,488 sq. ft. • Two Story • 4 Bedroom • 3.5 Bath • Dining • Family Room • Flex Living • Study • Game Room • 3 Car Tandem Garage

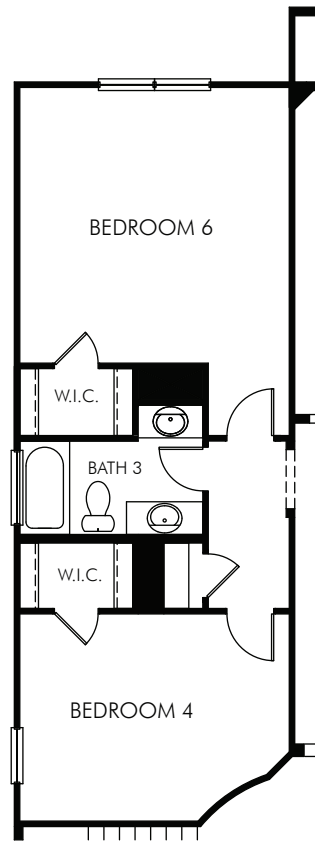
FLEX LIVING OPTIONS: Up to 4,260 sq. ft. • Sitting Area at Master • Bay at Master • Bay at Casual Dining • Bedroom 5 with Bath 4 • Office/Hobby/Media Room 2 • Morning Room with Hobby Room • Media • Bedroom 6 • 2nd Master Suite with 2nd Master Bath • Outdoor Living 1 • Outdoor Kitchen • Outdoor Living 2 • Outdoor Living 2 With Fireplace

Crimson

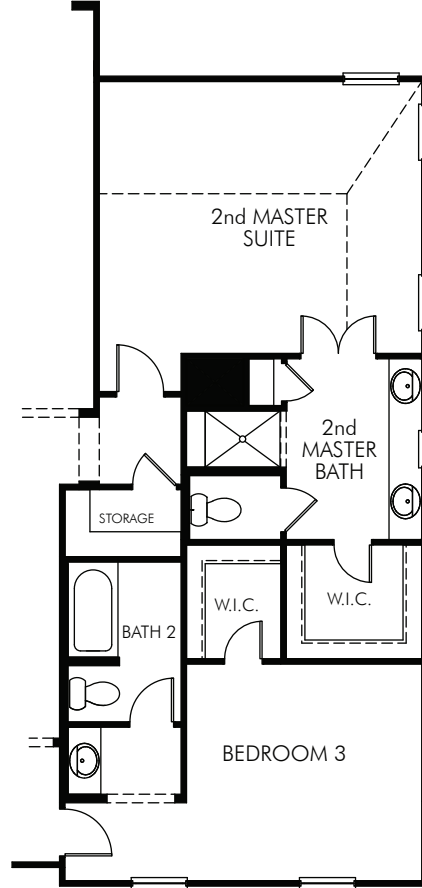


OPTIONS FOR THE CRIMSON • FIRST FLOOR

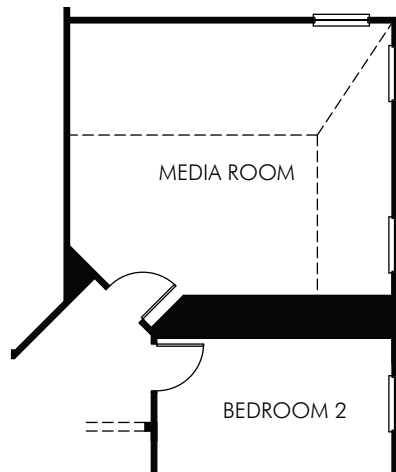




① OPT. BEDROOM 6
BED0600



② OPT. 2ND MASTER SUITE
BED0700



③ OPT. MEDIA
RM00012

OPTIONS FOR THE CRIMSON • SECOND FLOOR

MeritageHomes® 877-Ask-Meritage (275.6374) | meritagehomes.com

Floorplan rendering is an artist's conceptual rendering intended to provide a general overview. It does not constitute actual plans and specifications for any home and may depict elevations, options, upgrades, features, and amenities that are not included as part of the home and/or may not be available for all lots and/or in all communities. The floorplan rendering may not be drawn to scale. Any dimensions on the floorplan rendering are approximate and actual dimensions may vary. Plans and specifications are subject to change without notice. Homes may be constructed with a floorplan that is the reverse of the floorplan rendering. Plans are copyrighted and/or otherwise subject to intellectual property rights of Meritage and/or others and cannot be reproduced or copied without Meritage's prior written consent.

