

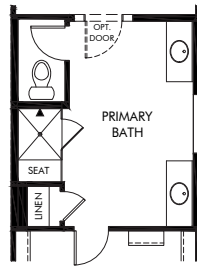
**Villages at Silverhawke | Aldea/Plan 145-2340**

**2,342 sq. ft. | 3 Bed | 2.5 Bath | 3 Car Tandem Garage | 1 Story**

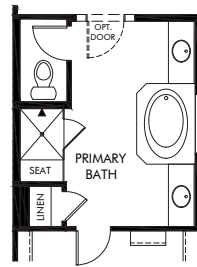
REV 08/20

**FLEX LIVING OPTIONS:** Opt. Primary Bath, Opt. Tub & Shower, Opt. Super Shower, Opt. Gourmet Kitchen, Opt. Home Office or Bedroom 5 & Bath 3 ILO Tandem, Opt. Expanded Pantry or Pocket Office ILO Storage, Opt. Bedroom 4 or Super Great Room ILO Den, Opt. Covered Patio Extension, Opt. 4' Garage Extension

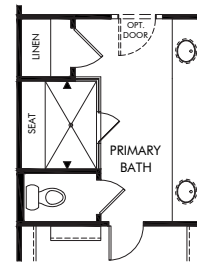
Any floorplan and/or elevation rendering is an artist's conceptual rendering intended to provide a general overview, but any such rendering does not constitute actual plans and specifications for any home. Renderings and pictures are representative and may depict floorplans, elevations, options, upgrades, landscaping, and other features and amenities that are not included as part of all homes and/or may not be available for all lots and/or in all communities. Renderings may not be drawn to scale. Any provided dimensions are approximate and actual dimensions may vary. Homes may be constructed with a floorplan that is the reverse of the floorplan rendering. Plans are copyrighted and/or otherwise subject to intellectual property rights of Meritage and/or others and cannot be reproduced or copied without Meritage's prior written consent. Plans and specifications, home features, and community information are subject to change, and homes to prior sale, at any time without notice or obligation. Additionally, deviations and variations may exist in any constructed home, including, without limitation: (i) substitution of materials and equipment of substantially equal or better quality; (ii) minor style, lot orientation, and color changes; (iii) minor variances in square footage and in room and space dimensions, and in window, door, utility outlet, and other improvement locations; (iv) changes as may be required by any state, federal, county, or local governmental authority in order to accommodate requested selections and/or options; and (v) value engineering and field changes.



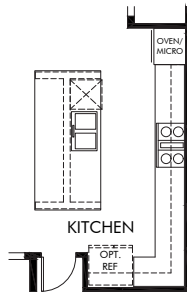
OPT. PRIMARY BATH



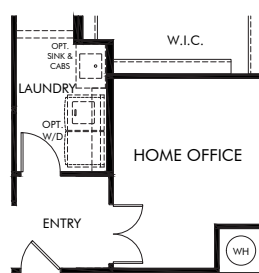
OPT. PRIMARY BATH WITH TUB & SHOWER



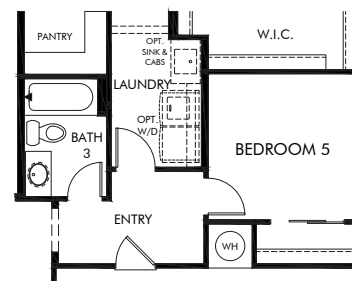
OPT. SUPER SHOWER IN PRIMARY BATH



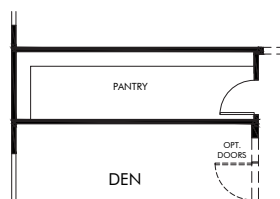
OPT. GOURMET KITCHEN



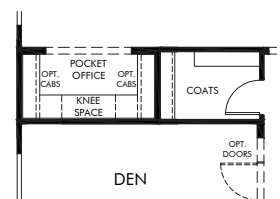
OPT. HOME OFFICE ILO TANDEM



OPT. BEDROOM 5 & BATH 3 ILO TANDEM & POWDER



OPT. EXPANDED PANTRY ILO STORAGE/COAT CLOSET



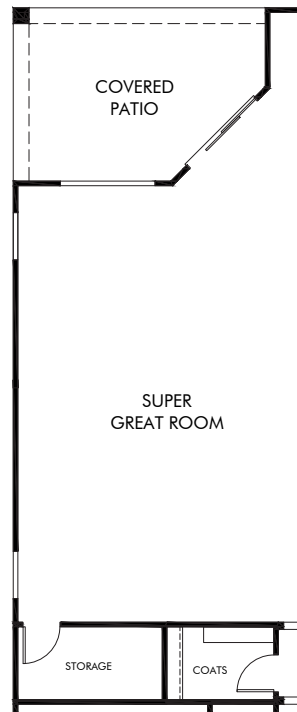
OPT. POCKET OFFICE ILO STORAGE

**Villages at Silverhawke | Aldea/Plan 145-2340 | Options**  
**2,342 sq. ft. | 3 Bed | 2.5 Bath | 3 Car Tandem Garage | 1 Story**

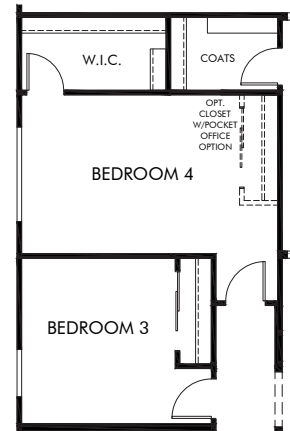
REV 08/20

**FLEX LIVING OPTIONS:** Opt. Primary Bath, Opt. Tub & Shower, Opt. Super Shower, Opt. Gourmet Kitchen, Opt. Home Office or Bedroom 5 & Bath 3 ILO Tandem, Opt. Expanded Pantry or Pocket Office ILO Storage, Opt. Bedroom 4 or Super Great Room ILO Den, Opt. Covered Patio Extension, Opt. 4' Garage Extension

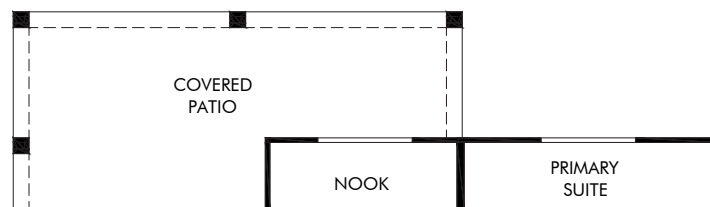
Any floorplan and/or elevation rendering is an artist's conceptual rendering intended to provide a general overview, but any such rendering does not constitute actual plans and specifications for any home. Renderings and pictures are representative and may depict floorplans, elevations, options, upgrades, landscaping, and other features and amenities that are not included as part of all homes and/or may not be available for all lots and/or in all communities. Renderings may not be drawn to scale. Any provided dimensions are approximate and actual dimensions may vary. Homes may be constructed with a floorplan that is the reverse of the floorplan rendering. Plans are copyrighted and/or otherwise subject to intellectual property rights of Meritage and/or others and cannot be reproduced or copied without Meritage's prior written consent. Plans and specifications, home features, and community information are subject to change, and homes to prior sale, at any time without notice or obligation. Additionally, deviations and variations may exist in any constructed home, including, without limitation: (i) substitution of materials and equipment of substantially equal or better quality; (ii) minor style, lot orientation, and color changes; (iii) minor variances in square footage and in room and space dimensions, and in window, door, utility outlet, and other improvement locations; (iv) changes as may be required by any state, federal, county, or local governmental authority in order to accommodate requested selections and/or options; and (v) value engineering and field changes.



OPT. SUPER GREAT ROOM  
ILO DEN



OPT. BEDROOM 4  
ILO DEN



OPT. COVERED PATIO EXTENSION

**Villages at Silverhawke | Aldea/Plan 145-2340 | Options**  
**2,342 sq. ft. | 3 Bed | 2.5 Bath | 3 Car Tandem Garage | 1 Story**

REV 08/20

**FLEX LIVING OPTIONS:** Opt. Primary Bath, Opt. Tub & Shower, Opt. Super Shower, Opt. Gourmet Kitchen, Opt. Home Office or Bedroom 5 & Bath 3 ILO Tandem, Opt. Expanded Pantry or Pocket Office ILO Storage, Opt. Bedroom 4 or Super Great Room ILO Den, Opt. Covered Patio Extension, Opt. 4' Garage Extension

Any floorplan and/or elevation rendering is an artist's conceptual rendering intended to provide a general overview, but any such rendering does not constitute actual plans and specifications for any home. Renderings and pictures are representative and may depict floorplans, elevations, options, upgrades, landscaping, and other features and amenities that are not included as part of all homes and/or may not be available for all lots and/or in all communities. Renderings may not be drawn to scale. Any provided dimensions are approximate and actual dimensions may vary. Homes may be constructed with a floorplan that is the reverse of the floorplan rendering. Plans are copyrighted and/or otherwise subject to intellectual property rights of Meritage and/or others and cannot be reproduced or copied without Meritage's prior written consent. Plans and specifications, home features, and community information are subject to change, and homes to prior sale, at any time without notice or obligation. Additionally, deviations and variations may exist in any constructed home, including, without limitation: (i) substitution of materials and equipment of substantially equal or better quality; (ii) minor style, lot orientation, and color changes; (iii) minor variances in square footage and in room and space dimensions, and in window, door, utility outlet, and other improvement locations; (iv) changes as may be required by any state, federal, county, or local governmental authority in order to accommodate requested selections and/or options; and (v) value engineering and field changes.