

Villages at Silverhawke | Rincon/Plan 245-3470 | First Floor

3,475 sq. ft. | 4 Bed | 3.5 Bath | 3 Car Tandem Garage | 2 Story

REV 08/20

FLEX LIVING OPTIONS: Opt. Gourmet Kitchen, Opt. Entrance to Rumpus, Opt. Guest Suite & Bath 5, Opt. Bedroom 5 & Bath 4, Opt. Expanded Pantry, Opt. Hobby Room, Opt. Super Shower, Opt. Bedroom 6, Opt. Covered Patio Extension, Opt. 4' Garage Extension

Any floorplan and/or elevation rendering is an artist's conceptual rendering intended to provide a general overview, but any such rendering does not constitute actual plans and specifications for any home. Renderings and pictures are representative and may depict floorplans, elevations, options, upgrades, landscaping, and other features and amenities that are not included as part of all homes and/or may not be available for all lots and/or in all communities. Renderings may not be drawn to scale. Any provided dimensions are approximate and actual dimensions may vary. Homes may be constructed with a floorplan that is the reverse of the floorplan rendering. Plans are copyrighted and/or otherwise subject to intellectual property rights of Meritage and/or others and cannot be reproduced or copied without Meritage's prior written consent. Plans and specifications, home features, and community information are subject to change, and homes to prior sale, at any time without notice or obligation. Additionally, deviations and variations may exist in any constructed home, including, without limitation: (i) substitution of materials and equipment of substantially equal or better quality; (ii) minor style, lot orientation, and color changes; (iii) minor variances in square footage and in room and space dimensions, and in window, door, utility outlet, and other improvement locations; (iv) changes as may be required by any state, federal, county, or local governmental authority in order to accommodate requested selections and/or options; and (v) value engineering and field changes.



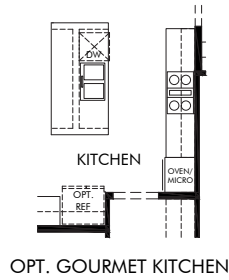
Villages at Silverhawke | Rincon/Plan 245-3470 | Second Floor

3,475 sq. ft. | 4 Bed | 3.5 Bath | 3 Car Tandem Garage | 2 Story

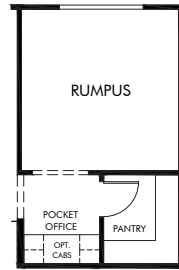
REV 08/20

FLEX LIVING OPTIONS: Opt. Gourmet Kitchen, Opt. Entrance to Rumpus, Opt. Guest Suite & Bath 5, Opt. Bedroom 5 & Bath 4, Opt. Expanded Pantry, Opt. Hobby Room, Opt. Super Shower, Opt. Bedroom 6, Opt. Covered Patio Extension, Opt. 4' Garage Extension

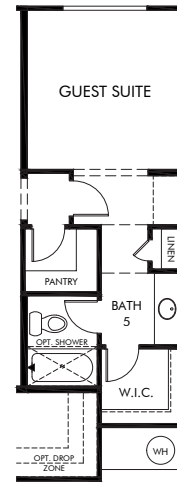
Any floorplan and/or elevation rendering is an artist's conceptual rendering intended to provide a general overview, but any such rendering does not constitute actual plans and specifications for any home. Renderings and pictures are representative and may depict floorplans, elevations, options, upgrades, landscaping, and other features and amenities that are not included as part of all homes and/or may not be available for all lots and/or in all communities. Renderings may not be drawn to scale. Any provided dimensions are approximate and actual dimensions may vary. Homes may be constructed with a floorplan that is the reverse of the floorplan rendering. Plans are copyrighted and/or otherwise subject to intellectual property rights of Meritage and/or others and cannot be reproduced or copied without Meritage's prior written consent. Plans and specifications, home features, and community information are subject to change, and homes to prior sale, at any time without notice or obligation. Additionally, deviations and variations may exist in any constructed home, including, without limitation: (i) substitution of materials and equipment of substantially equal or better quality; (ii) minor style, lot orientation, and color changes; (iii) minor variances in square footage and in room and space dimensions, and in window, door, utility outlet, and other improvement locations; (iv) changes as may be required by any state, federal, county, or local governmental authority in order to accommodate requested selections and/or options; and (v) value engineering and field changes.



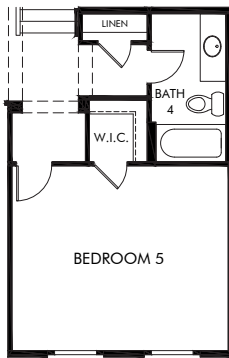
OPT. GOURMET KITCHEN



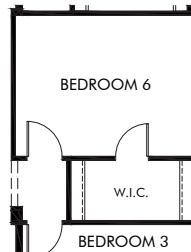
OPT. ENTRANCE TO RUMPUS



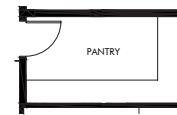
OPT. GUEST SUITE & BATH 5 ILO TANDEM, POCKET OFFICE & RUMPUS



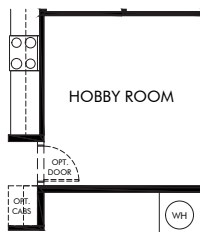
OPT. BEDROOM 5 & BATH 4 ILO DEN/POWDER



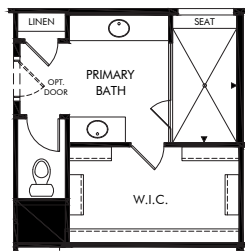
OPT. BEDROOM 6 ILO GAME ROOM



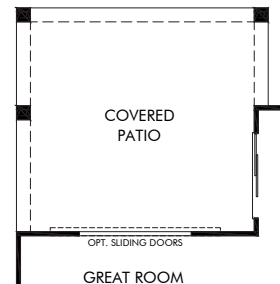
OPT. EXPANDED PANTRY



OPT. HOBBY ROOM ILO TANDEM



OPT. SUPER SHOWER IN PRIMARY BATH



OPT. COVERED PATIO EXTENSION

Villages at Silverhawke | Rincon/Plan 245-3470 | Options

3,475 sq. ft. | 4 Bed | 3.5 Bath | 3 Car Tandem Garage | 2 Story

REV 08/20

FLEX LIVING OPTIONS: Opt. Gourmet Kitchen, Opt. Entrance to Rumpus, Opt. Guest Suite & Bath 5, Opt. Bedroom 5 & Bath 4, Opt. Expanded Pantry, Opt. Hobby Room, Opt. Super Shower, Opt. Bedroom 6, Opt. Covered Patio Extension, Opt. 4' Garage Extension

Any floorplan and/or elevation rendering is an artist's conceptual rendering intended to provide a general overview, but any such rendering does not constitute actual plans and specifications for any home. Renderings and pictures are representative and may depict floorplans, elevations, options, upgrades, landscaping, and other features and amenities that are not included as part of all homes and/or may not be available for all lots and/or in all communities. Renderings may not be drawn to scale. Any provided dimensions are approximate and actual dimensions may vary. Homes may be constructed with a floorplan that is the reverse of the floorplan rendering. Plans are copyrighted and/or otherwise subject to intellectual property rights of Meritage and/or others and cannot be reproduced or copied without Meritage's prior written consent. Plans and specifications, home features, and community information are subject to change, and homes to prior sale, at any time without notice or obligation. Additionally, deviations and variations may exist in any constructed home, including, without limitation: (i) substitution of materials and equipment of substantially equal or better quality; (ii) minor style, lot orientation, and color changes; (iii) minor variances in square footage and in room and space dimensions, and in window, door, utility outlet, and other improvement locations; (iv) changes as may be required by any state, federal, county, or local governmental authority in order to accommodate requested selections and/or options; and (v) value engineering and field changes.