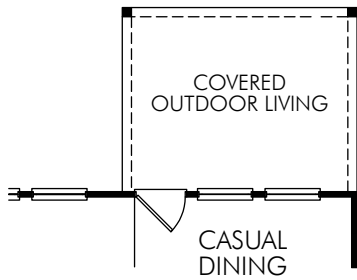


The Windsor | Plan 5007 | First Floor
2,539 sq. ft. | 3 Bed | 2 Bath | 2 Car Garage | 1 Story

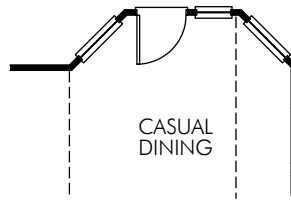
FLEX LIVING OPTIONS: Bay at Master. Bay at Casual Dining. Sliding Glass Door. Study. Powder. Bedroom 4. Teen Room. Covered Outdoor Living.

Rev 15-004
REG 5007
Base + Built-in

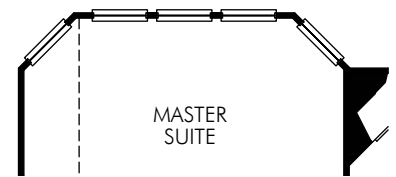
Any floorplan and/or elevation rendering is an artist's conceptual rendering intended to provide a general overview, but any such rendering does not constitute actual plans and specifications for any home. Renderings and pictures are representative and may depict floorplans, elevations, options, upgrades, landscaping, and other features and amenities that are not included as part of all homes and/or may not be available for all lots and/or in all communities. Renderings may not be drawn to scale. Any provided dimensions are approximate and actual dimensions may vary. Homes may be constructed with a floorplan that is the reverse of the floorplan rendering. Plans are copyrighted and/or otherwise subject to intellectual property rights of Meritage and/or others and cannot be reproduced or copied without Meritage's prior written consent. Plans and specifications, home features, and community information are subject to change, and homes to prior sale, at any time without notice or obligation. Additionally, deviations and variations may exist in any constructed home, including, without limitation: (i) substitution of materials and equipment of substantially equal or better quality; (ii) minor style, lot orientation, and color changes; (iii) minor variances in square footage and in room and space dimensions, and in window, door, utility outlet, and other improvement locations; (iv) changes as may be required by any state, federal, county, or local governmental authority in order to accommodate requested selections and/or options; and (v) value engineering and field changes.



① OPT. COVERED OUTDOOR LIVING
OUT1410



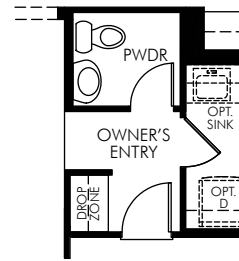
② OPT. BAY AT CASUAL DINING
-adding up to 39 sq. ft.
BAY0002



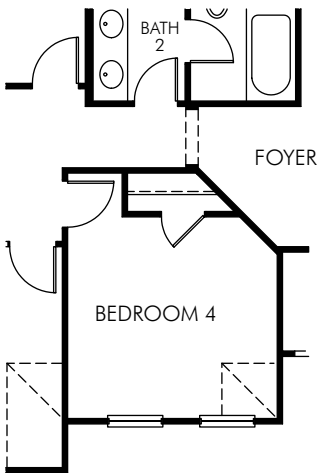
③ OPT. BAY AT MASTER
-adding up to 59 sq. ft.
BAY0005



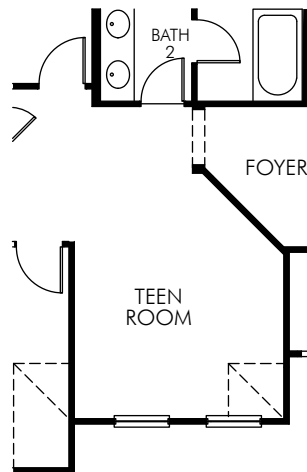
④ OPT. SLIDING DOOR
DOOR10



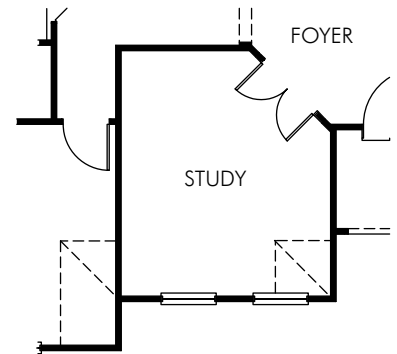
⑤ OPT. POWDER
BTH0313



⑥ OPT. BEDROOM 4
BED0400



⑦ OPT. TEEN ROOM
RMO0065



⑧ OPT. STUDY
RMO0015

The Windsor | Plan 5007 | First Floor Options
2,539 sq. ft. | 3 Bed | 2 Bath | 2 Car Garage | 1 Story

Any floorplan and/or elevation rendering is an artist's conceptual rendering intended to provide a general overview, but any such rendering does not constitute actual plans and specifications for any home. Renderings and pictures are representative and may depict floorplans, elevations, options, upgrades, landscaping, and other features and amenities that are not included as part of all homes and/or may not be available for all lots and/or in all communities. Renderings may not be drawn to scale. Any provided dimensions are approximate and actual dimensions may vary. Homes may be constructed with a floorplan that is the reverse of the floorplan rendering. Plans are copyrighted and/or otherwise subject to intellectual property rights of Meritage and/or others and cannot be reproduced or copied without Meritage's prior written consent. Plans and specifications, home features, and community information are subject to change, and homes to prior sale, at any time without notice or obligation. Additionally, deviations and variations may exist in any constructed home, including, without limitation: (i) substitution of materials and equipment of substantially equal or better quality; (ii) minor style, lot orientation, and color changes; (iii) minor variances in square footage and in room and space dimensions, and in window, door, utility outlet, and other improvement locations; (iv) changes as may be required by any state, federal, county, or local governmental authority in order to accommodate requested selections and/or options; and (v) value engineering and field changes.