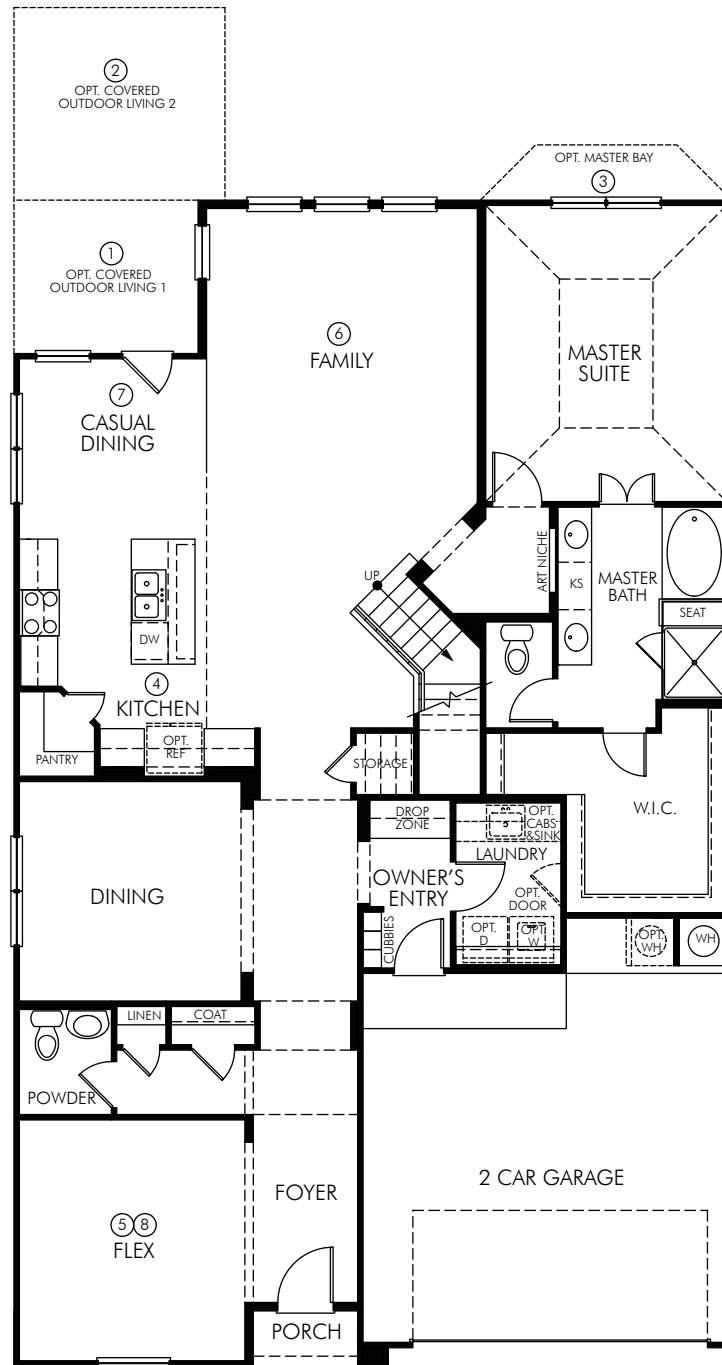


# Spanish Oak



## The Spanish Oak 4014 First Floor

3,182 sq. ft. | 4 Bed | 2.5 Bath | 2 Garage | 2 Story

**FLEX LIVING OPTIONS:** Fireplace. Master Bay. Sliding Door. Built-in Kitchen. Study. Bedroom 6/Bath 4. Outdoor Living 1. Outdoor Living 2.

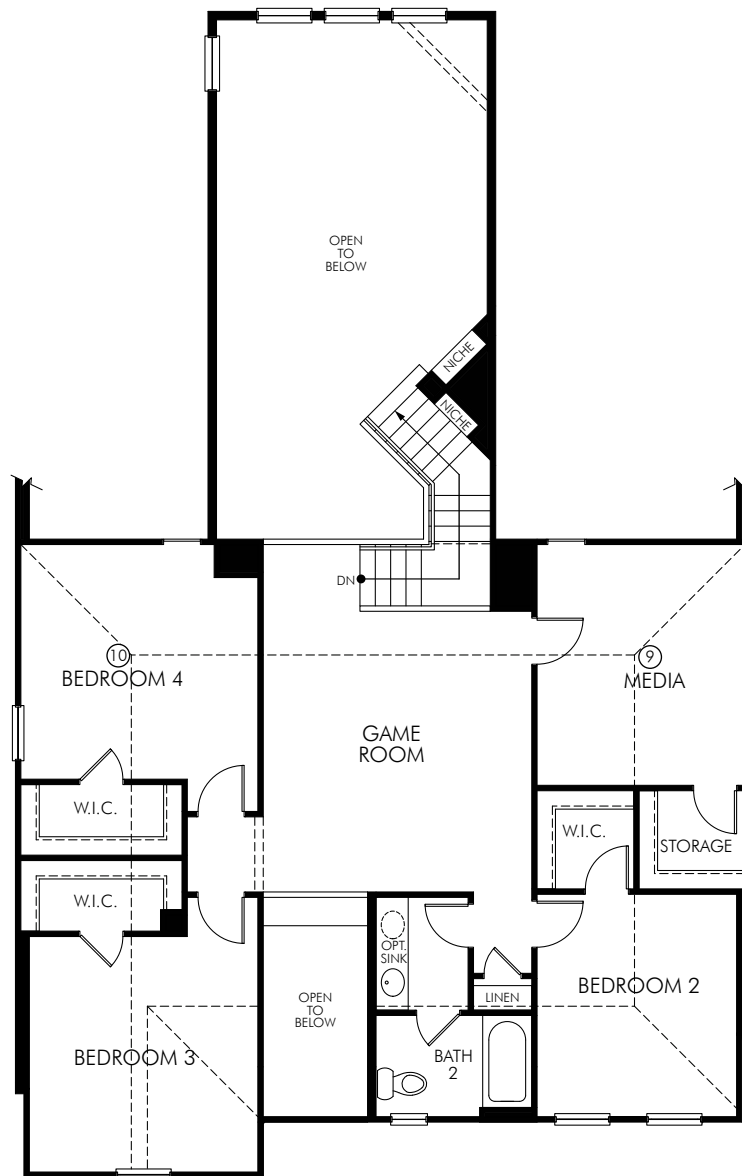
**MeritageHomes**® 877-Ask-Meritage (275.6374) | [meritagehomes.com](http://meritagehomes.com)

Floorplan rendering is an artist's conceptual rendering intended to provide a general overview. It does not constitute actual plans and specifications for any home and may depict elevations, options, upgrades, features, and amenities that are not included as part of the home and/or may not be available for all lots and/or in all communities. The floorplan rendering may not be drawn to scale. Any dimensions on the floorplan rendering are approximate and actual dimensions may vary. Plans and specifications are subject to change without notice. Homes may be constructed with a floorplan that is the reverse of the floorplan rendering. Plans are copyrighted and/or otherwise subject to intellectual property rights of Meritage and/or others and cannot be reproduced or copied without Meritage's prior written consent.

Rev 15-005  
REG 4014 Base



# Spanish Oak



## The Spanish Oak 4014 Second Floor

3,182 sq. ft. | 4 Bed | 2.5 Bath | 2 Garage | 2 Story

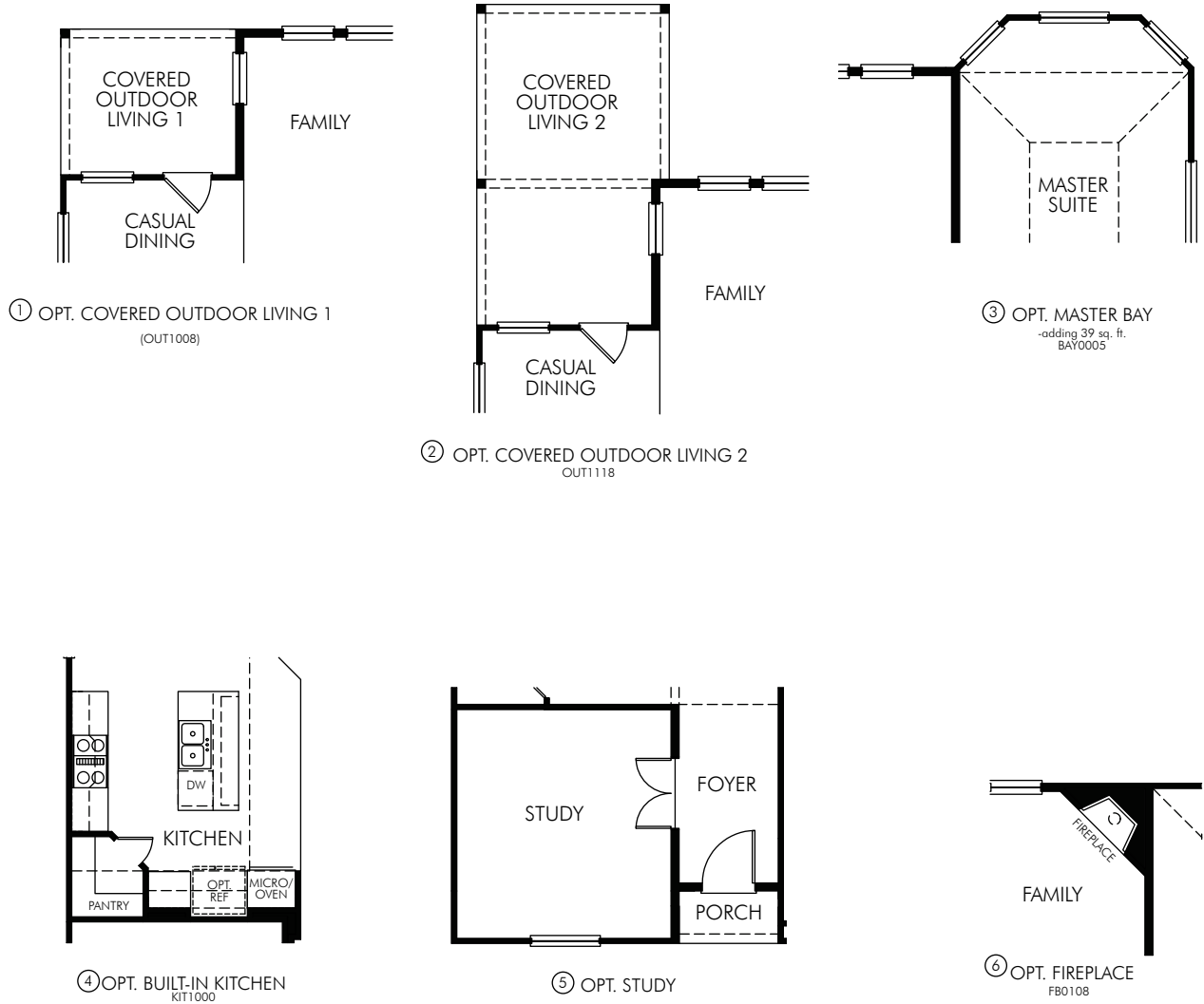
**FLEX LIVING OPTIONS:** Bedroom 5. Bath 3.

**MeritageHomes®** 877-Ask-Meritage (275.6374) | [meritagehomes.com](http://meritagehomes.com)

Floorplan rendering is an artist's conceptual rendering intended to provide a general overview. It does not constitute actual plans and specifications for any home and may depict elevations, options, upgrades, features, and amenities that are not included as part of the home and/or may not be available for all lots and/or in all communities. The floorplan rendering may not be drawn to scale. Any dimensions on the floorplan rendering are approximate and actual dimensions may vary. Plans and specifications are subject to change without notice. Homes may be constructed with a floorplan that is the reverse of the floorplan rendering. Plans are copyrighted and/or otherwise subject to intellectual property rights of Meritage and/or others and cannot be reproduced or copied without Meritage's prior written consent.



# Spanish Oak

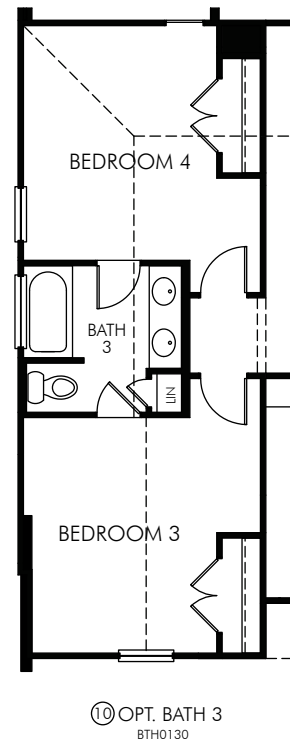
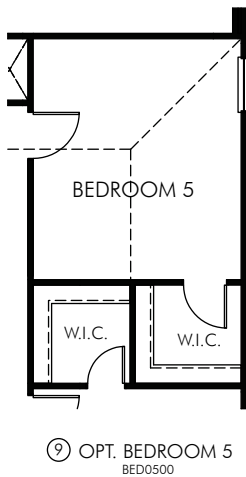
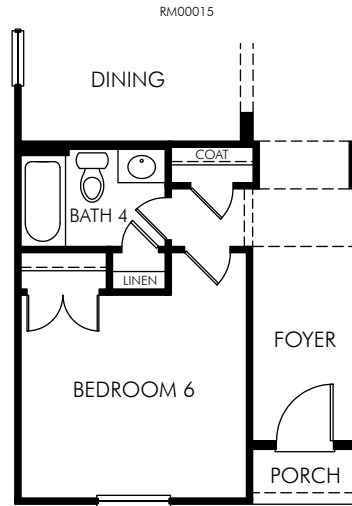
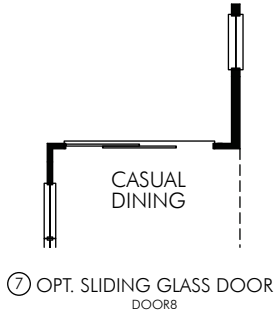


## First Floor

### The Spanish Oak 4014 Options

3,182 sq. ft. | 4 Bed | 2.5 Bath | 2 Garage | 2 Story

# Spanish Oak



## First Floor and Second Floor

### The Spanish Oak 4014 Options

3,182 sq. ft. | 4 Bed | 2.5 Bath | 2 Garage | 2 Story

**MeritageHomes**® 877-Ask-Meritage (275.6374) | [meritagehomes.com](http://meritagehomes.com)

Floorplan rendering is an artist's conceptual rendering intended to provide a general overview. It does not constitute actual plans and specifications for any home and may depict elevations, options, upgrades, features, and amenities that are not included as part of the home and/or may not be available for all lots and/or in all communities. The floorplan rendering may not be drawn to scale. Any dimensions on the floorplan rendering are approximate and actual dimensions may vary. Plans and specifications are subject to change without notice. Homes may be constructed with a floorplan that is the reverse of the floorplan rendering. Plans are copyrighted and/or otherwise subject to intellectual property rights of Meritage and/or others and cannot be reproduced or copied without Meritage's prior written consent.

