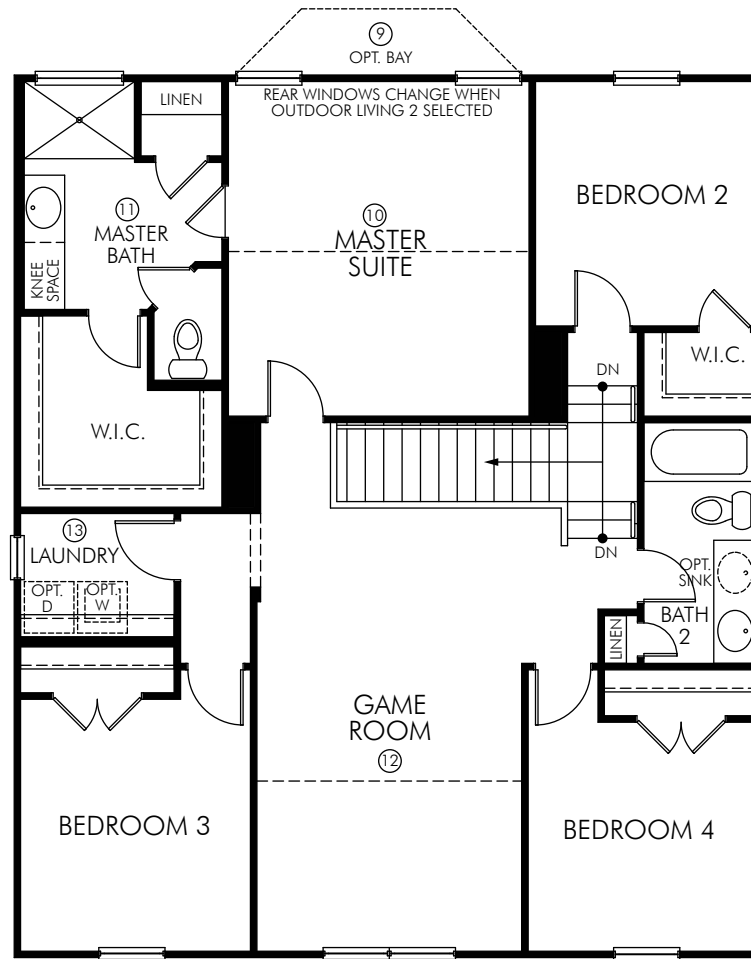


**The Red River | Plan 3006 | First Floor**  
2,294 sq. ft. | 4 Bed | 2.5 Bath | 2 Car Garage | 2 Story

**FLEX LIVING OPTIONS:** Deluxe Kitchen. Bulk Storage. Study. Bedroom 6/ Bath 3. Outdoor Living. Fireplace.

Rev 17-010  
REG 3006 Base

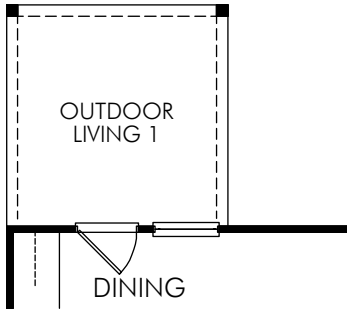
Any floorplan and/or elevation rendering is an artist's conceptual rendering intended to provide a general overview, but any such rendering does not constitute actual plans and specifications for any home. Renderings and pictures are representative and may depict floorplans, elevations, options, upgrades, landscaping, and other features and amenities that are not included as part of all homes and/or may not be available for all lots and/or in all communities. Renderings may not be drawn to scale. Any provided dimensions are approximate and actual dimensions may vary. Homes may be constructed with a floorplan that is the reverse of the floorplan rendering. Plans are copyrighted and/or otherwise subject to intellectual property rights of Meritage and/or others and cannot be reproduced or copied without Meritage's prior written consent. Plans and specifications, home features, and community information are subject to change, and homes to prior sale, at any time without notice or obligation. Additionally, deviations and variations may exist in any constructed home, including, without limitation: (i) substitution of materials and equipment of substantially equal or better quality; (ii) minor style, lot orientation, and color changes; (iii) minor variances in square footage and in room and space dimensions, and in window, door, utility outlet, and other improvement locations; (iv) changes as may be required by any state, federal, county, or local governmental authority in order to accommodate requested selections and/or options; and (v) value engineering and field changes.



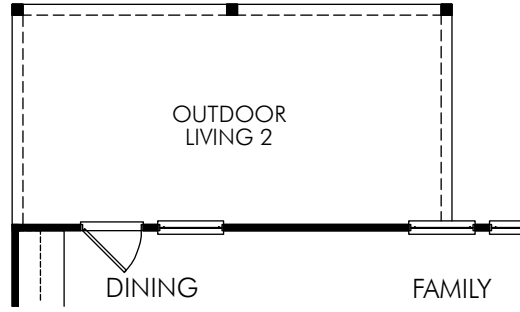
**The Red River | Plan 3006 | Second Floor**  
2,294 sq. ft. | 4 Bed | 2.5 Bath | 2 Car Garage | 2 Story

**FLEX LIVING OPTIONS:** Master Suite Bay. Deluxe Master Suite. Deluxe Master Bath.  
Bedroom 5/ Game Room. Bath 4.

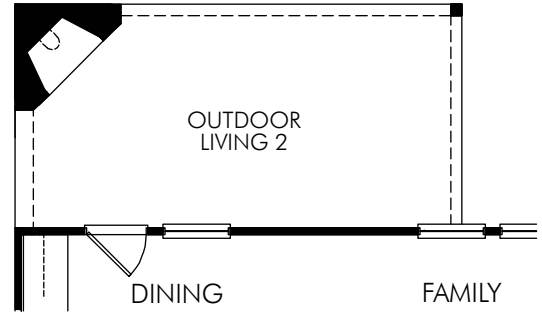
Any floorplan and/or elevation rendering is an artist's conceptual rendering intended to provide a general overview, but any such rendering does not constitute actual plans and specifications for any home. Renderings and pictures are representative and may depict floorplans, elevations, options, upgrades, landscaping, and other features and amenities that are not included as part of all homes and/or may not be available for all lots and/or in all communities. Renderings may not be drawn to scale. Any provided dimensions are approximate and actual dimensions may vary. Homes may be constructed with a floorplan that is the reverse of the floorplan rendering. Plans are copyrighted and/or otherwise subject to intellectual property rights of Meritage and/or others and cannot be reproduced or copied without Meritage's prior written consent. Plans and specifications, home features, and community information are subject to change, and homes to prior sale, at any time without notice or obligation. Additionally, deviations and variations may exist in any constructed home, including, without limitation: (i) substitution of materials and equipment of substantially equal or better quality; (ii) minor style, lot orientation, and color changes; (iii) minor variances in square footage and in room and space dimensions, and in window, door, utility outlet, and other improvement locations; (iv) changes as may be required by any state, federal, county, or local governmental authority in order to accommodate requested selections and/or options; and (v) value engineering and field changes.



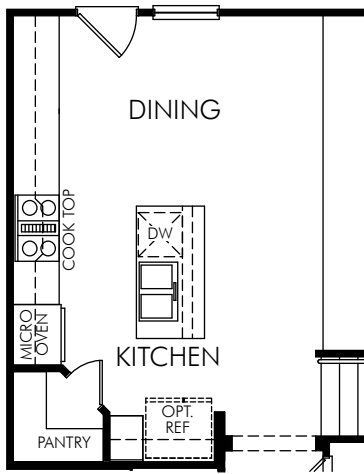
① OPT. OUTDOOR LIVING 1  
(OUT1010)



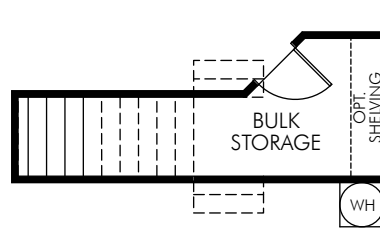
② OPT. OUTDOOR LIVING 2  
(OUT2010)



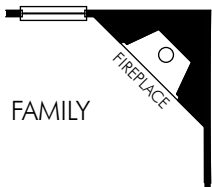
③ OPT. OUTDOOR LIVING 2  
w/FIREPLACE  
(FPO0130)



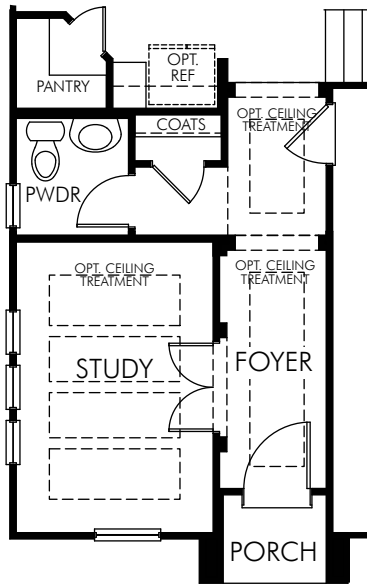
④ OPT. DELUXE KITCHEN  
(KIT1000)



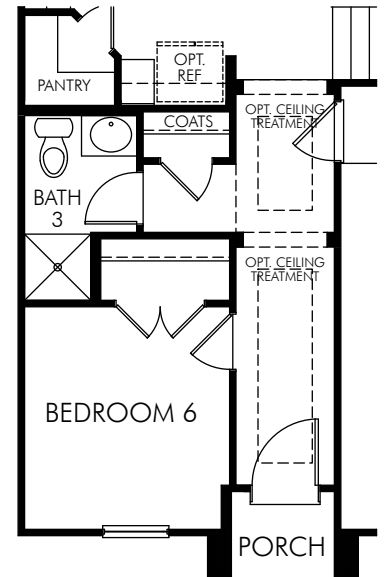
⑥ OPT. BULK STORAGE  
(RMO0043)



⑤ OPT. FIREPLACE  
(FPO0108)



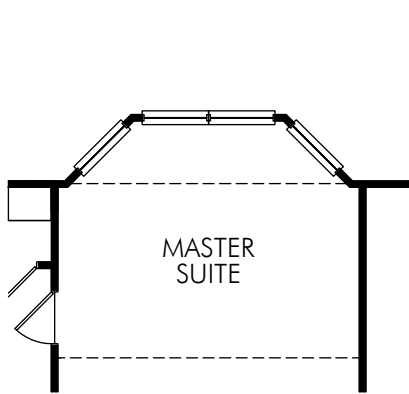
⑦ OPT. STUDY  
(RMO0015)  
WINDOW CONFIGURATIONS  
VARY BY ELEVATION



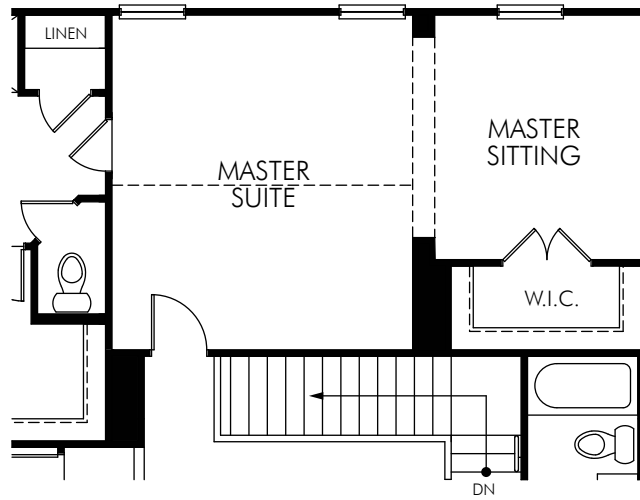
⑧ OPT. BEDROOM 6/BATH 3  
(BED0604 & BTH0130)  
WINDOW CONFIGURATIONS  
VARY BY ELEVATION

**The Red River | Plan 3006 | First Floor Options**  
**2,294 sq. ft. | 4 Bed | 2.5 Bath | 2 Car Garage | 2 Story**

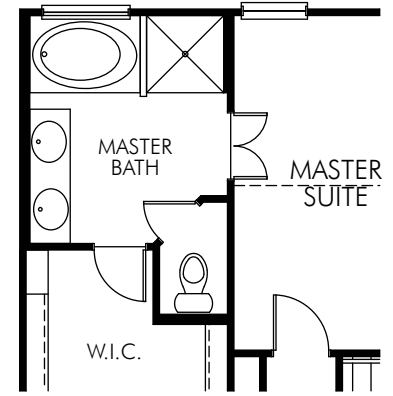
Any floorplan and/or elevation rendering is an artist's conceptual rendering intended to provide a general overview, but any such rendering does not constitute actual plans and specifications for any home. Renderings and pictures are representative and may depict floorplans, elevations, options, upgrades, landscaping, and other features and amenities that are not included as part of all homes and/or may not be available for all lots and/or in all communities. Renderings may not be drawn to scale. Any provided dimensions are approximate and actual dimensions may vary. Homes may be constructed with a floorplan that is the reverse of the floorplan rendering. Plans are copyrighted and/or otherwise subject to intellectual property rights of Meritage and/or others and cannot be reproduced or copied without Meritage's prior written consent. Plans and specifications, home features, and community information are subject to change, and homes to prior sale, at any time without notice or obligation. Additionally, deviations and variations may exist in any constructed home, including, without limitation: (i) substitution of materials and equipment of substantially equal or better quality; (ii) minor style, lot orientation, and color changes; (iii) minor variances in square footage and in room and space dimensions, and in window, door, utility outlet, and other improvement locations; (iv) changes as may be required by any state, federal, county, or local governmental authority in order to accommodate requested selections and/or options; and (v) value engineering and field changes.



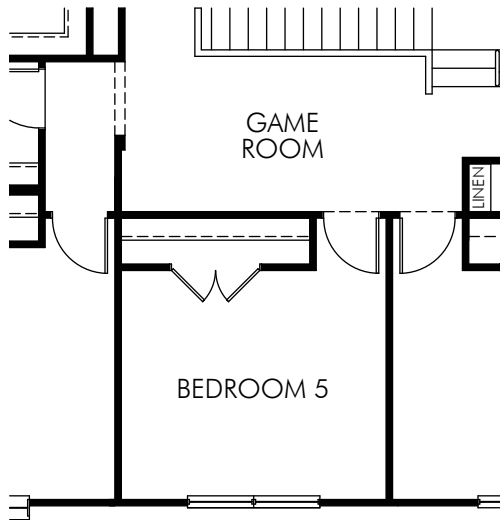
⑨ OPT. MASTER SUITE BAY  
-adding 38 sq. ft.  
(BAY0005)



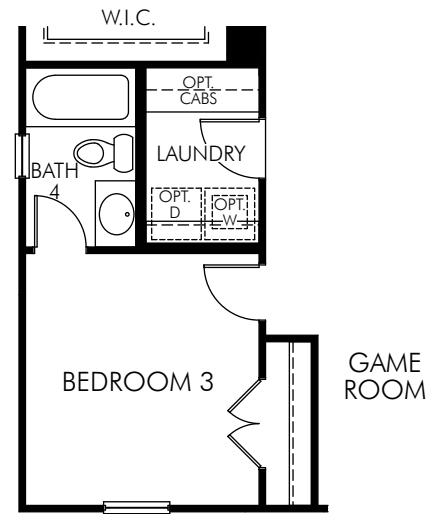
⑩ OPT. DELUXE MASTER SUITE  
(BED0701)



⑪ OPT. DELUXE MASTER BATH  
(BTH0115)



⑫ OPT. BEDROOM 5/  
GAME ROOM  
WINDOW CONFIGURATIONS VARY  
BY ELEVATION  
(BED0500)



⑬ OPT. BATH 4  
WINDOW CONFIGURATIONS VARY  
BY ELEVATION  
(BTH0140)

**The Red River | Plan 3006 | Second Floor Options**  
**2,294 sq. ft. | 4 Bed | 2.5 Bath | 2 Car Garage | 2 Story**

Any floorplan and/or elevation rendering is an artist's conceptual rendering intended to provide a general overview, but any such rendering does not constitute actual plans and specifications for any home. Renderings and pictures are representative and may depict floorplans, elevations, options, upgrades, landscaping, and other features and amenities that are not included as part of all homes and/or may not be available for all lots and/or in all communities. Renderings may not be drawn to scale. Any provided dimensions are approximate and actual dimensions may vary. Homes may be constructed with a floorplan that is the reverse of the floorplan rendering. Plans are copyrighted and/or otherwise subject to intellectual property rights of Meritage and/or others and cannot be reproduced or copied without Meritage's prior written consent. Plans and specifications, home features, and community information are subject to change, and homes to prior sale, at any time without notice or obligation. Additionally, deviations and variations may exist in any constructed home, including, without limitation: (i) substitution of materials and equipment of substantially equal or better quality; (ii) minor style, lot orientation, and color changes; (iii) minor variances in square footage and in room and space dimensions, and in window, door, utility outlet, and other improvement locations; (iv) changes as may be required by any state, federal, county, or local governmental authority in order to accommodate requested selections and/or options; and (v) value engineering and field changes.