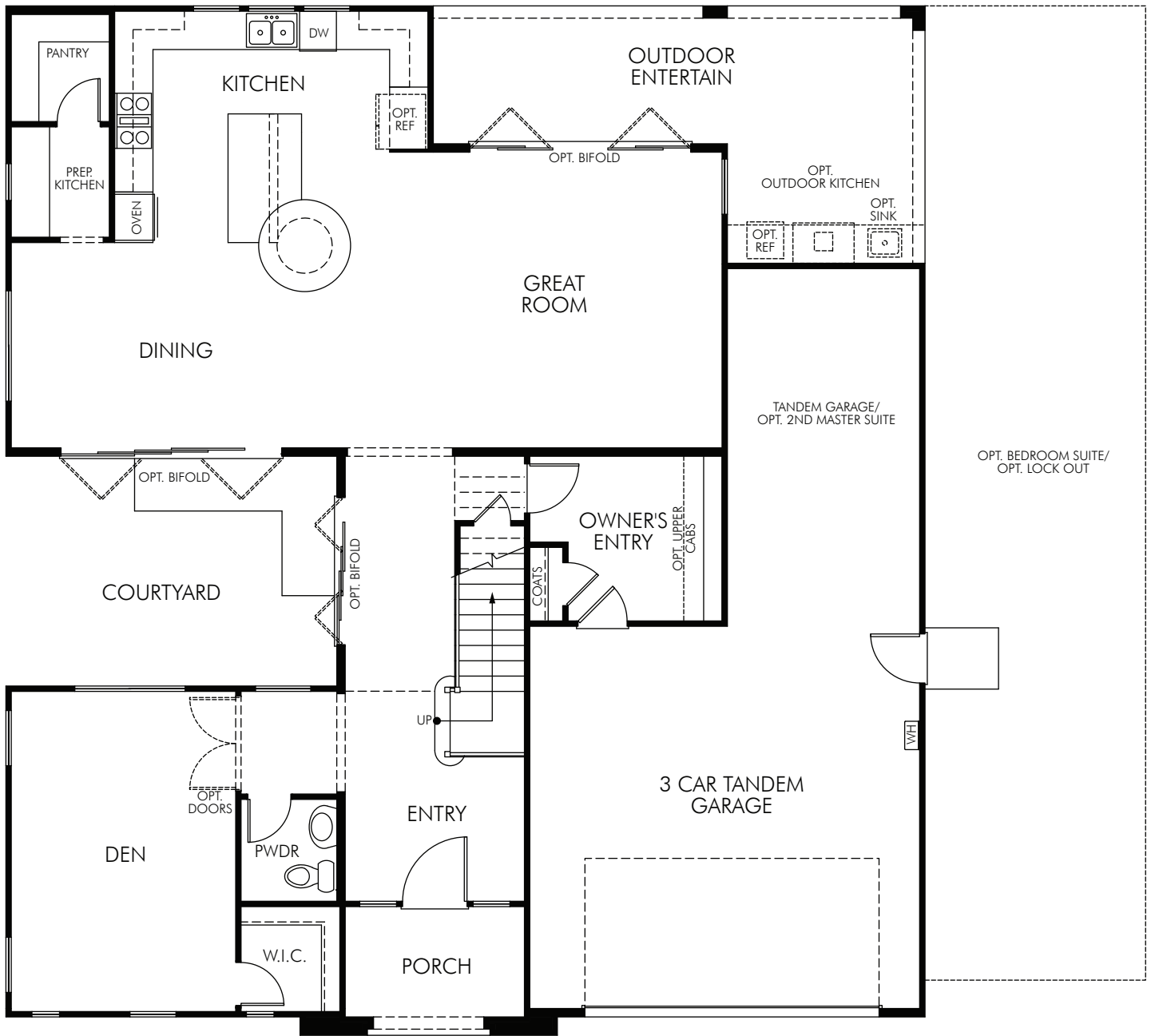


# Creekside: 3401



FIRST FLOOR

## Creekside

Plan 1

Plan 3401

3,401 sq. ft. | 3 Bed | 3.5 Bath | 3 Car Garage | 2 Story



877-Ask-Meritage (275.6374) | [meritagehomes.com](http://meritagehomes.com)



Floorplan rendering is an artist's conceptual rendering intended to provide a general overview. It does not constitute actual plans and specifications for any home and may depict elevations, options, upgrades, features, and amenities that are not included as part of the home and/or may not be available for all lots and/or in all communities. The floorplan rendering may not be drawn to scale. Any dimensions on the floorplan rendering are approximate and actual dimensions may vary. Plans and specifications are subject to change without notice. Homes may be constructed with a floorplan that is the reverse of the floorplan rendering. Plans are copyrighted and/or otherwise subject to intellectual property rights of Meritage and/or others and cannot be reproduced or copied without Meritage's prior written consent.



# Creekside: 3401



SECOND FLOOR

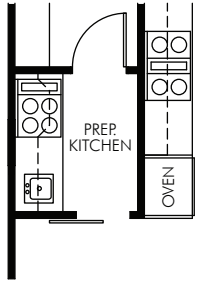
Creekside  
Plan 1

**MeritageHomes**® 877-Ask-Meritage (275.6374) | [meritagehomes.com](http://meritagehomes.com)

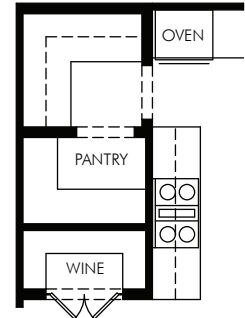
Floorplan rendering is an artist's conceptual rendering intended to provide a general overview. It does not constitute actual plans and specifications for any home and may depict elevations, options, upgrades, features, and amenities that are not included as part of the home and/or may not be available for all lots and/or in all communities. The floorplan rendering may not be drawn to scale. Any dimensions on the floorplan rendering are approximate and actual dimensions may vary. Plans and specifications are subject to change without notice. Homes may be constructed with a floorplan that is the reverse of the floorplan rendering. Plans are copyrighted and/or otherwise subject to intellectual property rights of Meritage and/or others and cannot be reproduced or copied without Meritage's prior written consent.



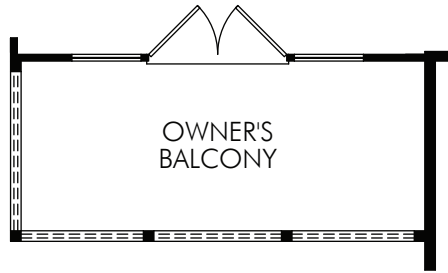
# Creekside: 3401



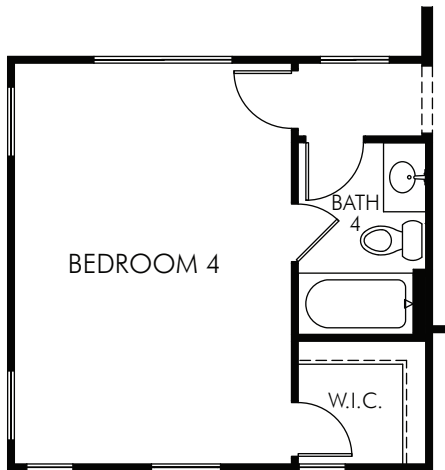
OPT. PREP KITCHEN



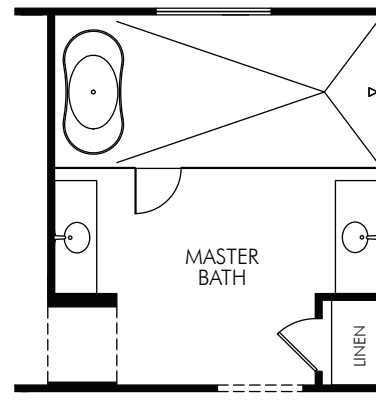
OPT. WINE



OPT. MASTER BALCONY



OPT. BEDROOM 4



OPT. MASTER LUXURY BATH

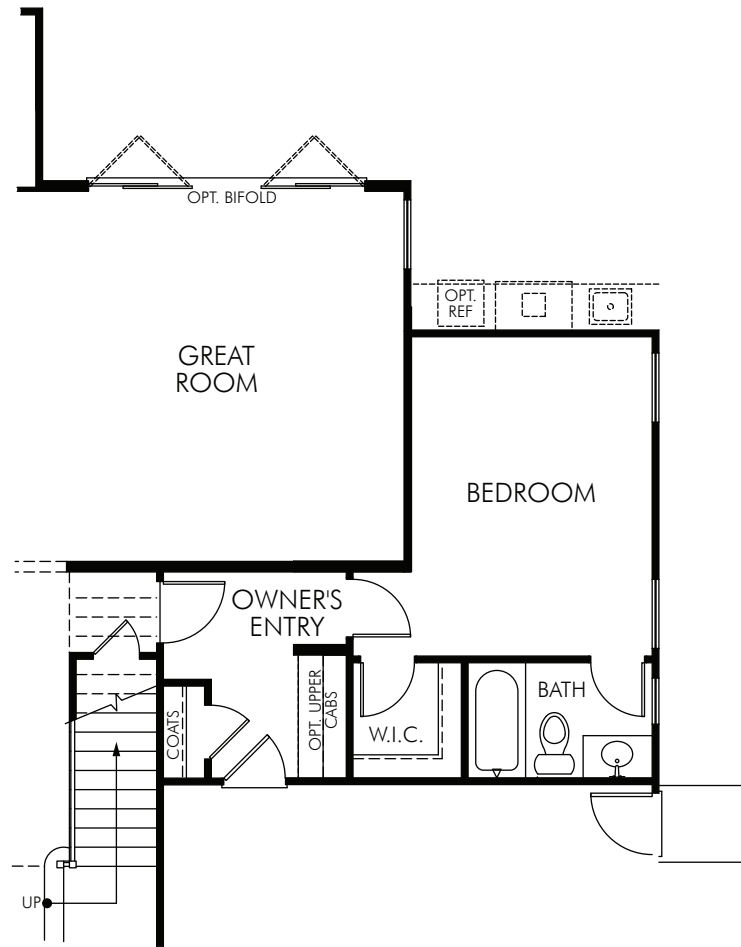
Creekside  
Plan 1

**MeritageHomes**® 877-Ask-Meritage (275.6374) | [meritagehomes.com](http://meritagehomes.com)

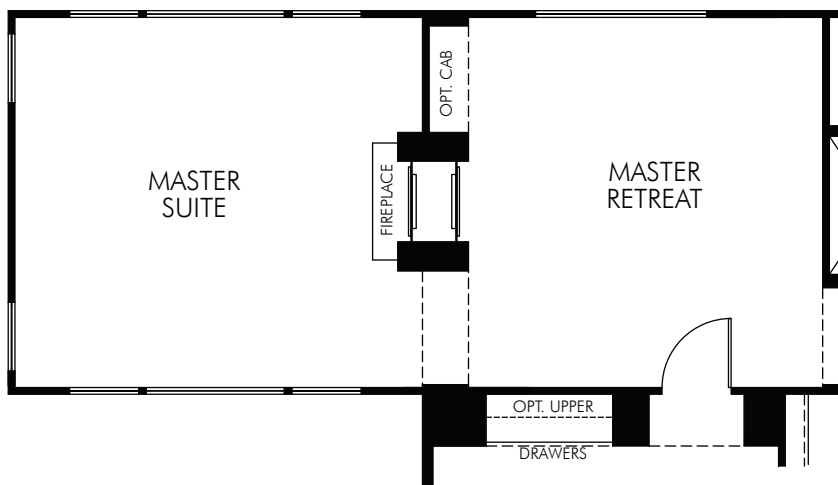
Floorplan rendering is an artist's conceptual rendering intended to provide a general overview. It does not constitute actual plans and specifications for any home and may depict elevations, options, upgrades, features, and amenities that are not included as part of the home and/or may not be available for all lots and/or in all communities. The floorplan rendering may not be drawn to scale. Any dimensions on the floorplan rendering are approximate and actual dimensions may vary. Plans and specifications are subject to change without notice. Homes may be constructed with a floorplan that is the reverse of the floorplan rendering. Plans are copyrighted and/or otherwise subject to intellectual property rights of Meritage and/or others and cannot be reproduced or copied without Meritage's prior written consent.



# Creekside: 3401



OPT. BEDROOM SUITE ILO TANDEM



OPT. MASTER RETREAT

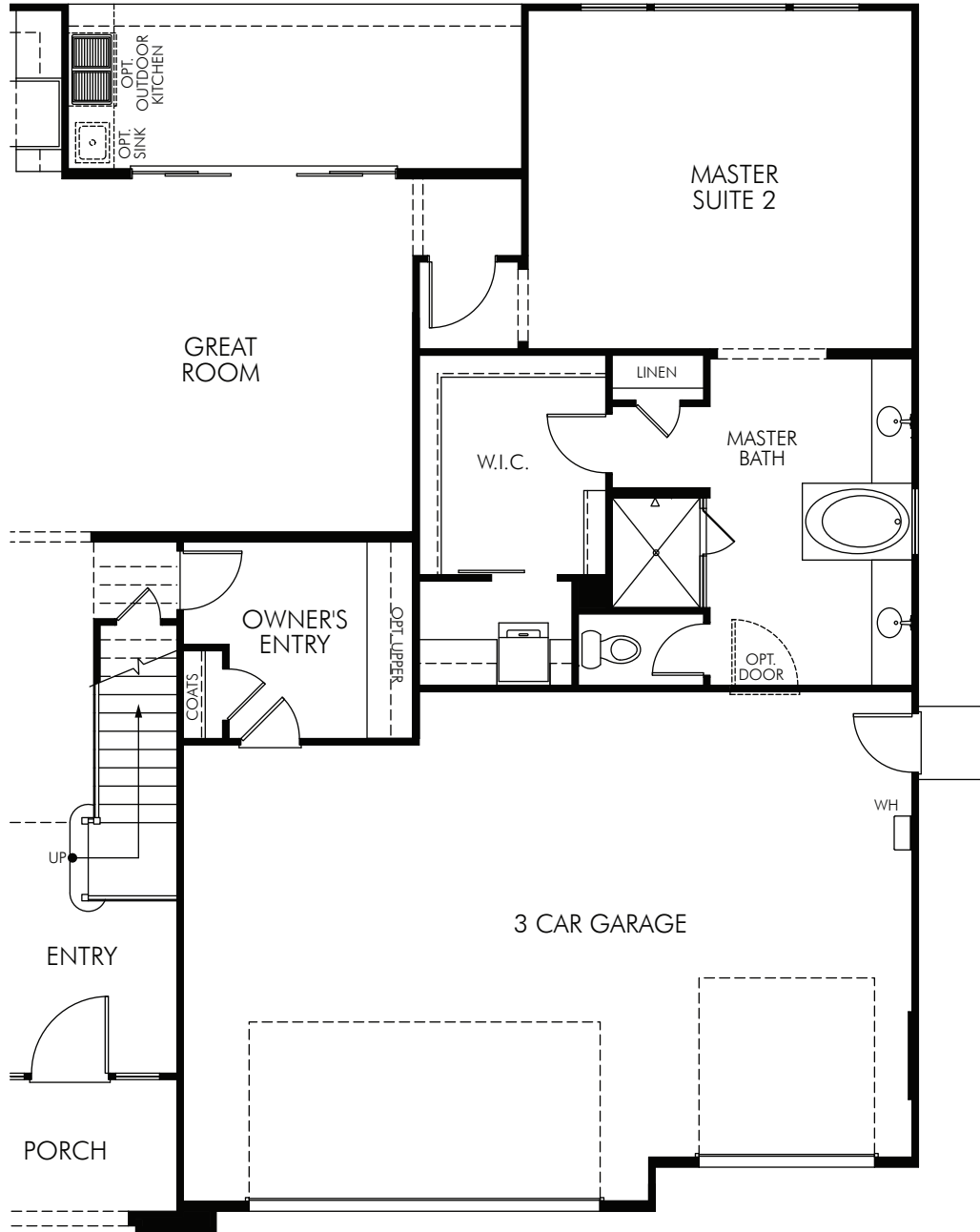
Creekside  
Plan 1

**MeritageHomes**® 877-Ask-Meritage (275.6374) | [meritagehomes.com](http://meritagehomes.com)

Floorplan rendering is an artist's conceptual rendering intended to provide a general overview. It does not constitute actual plans and specifications for any home and may depict elevations, options, upgrades, features, and amenities that are not included as part of the home and/or may not be available for all lots and/or in all communities. The floorplan rendering may not be drawn to scale. Any dimensions on the floorplan rendering are approximate and actual dimensions may vary. Plans and specifications are subject to change without notice. Homes may be constructed with a floorplan that is the reverse of the floorplan rendering. Plans are copyrighted and/or otherwise subject to intellectual property rights of Meritage and/or others and cannot be reproduced or copied without Meritage's prior written consent.



# Creekside: 3401



OPT. MASTER SUITE 2

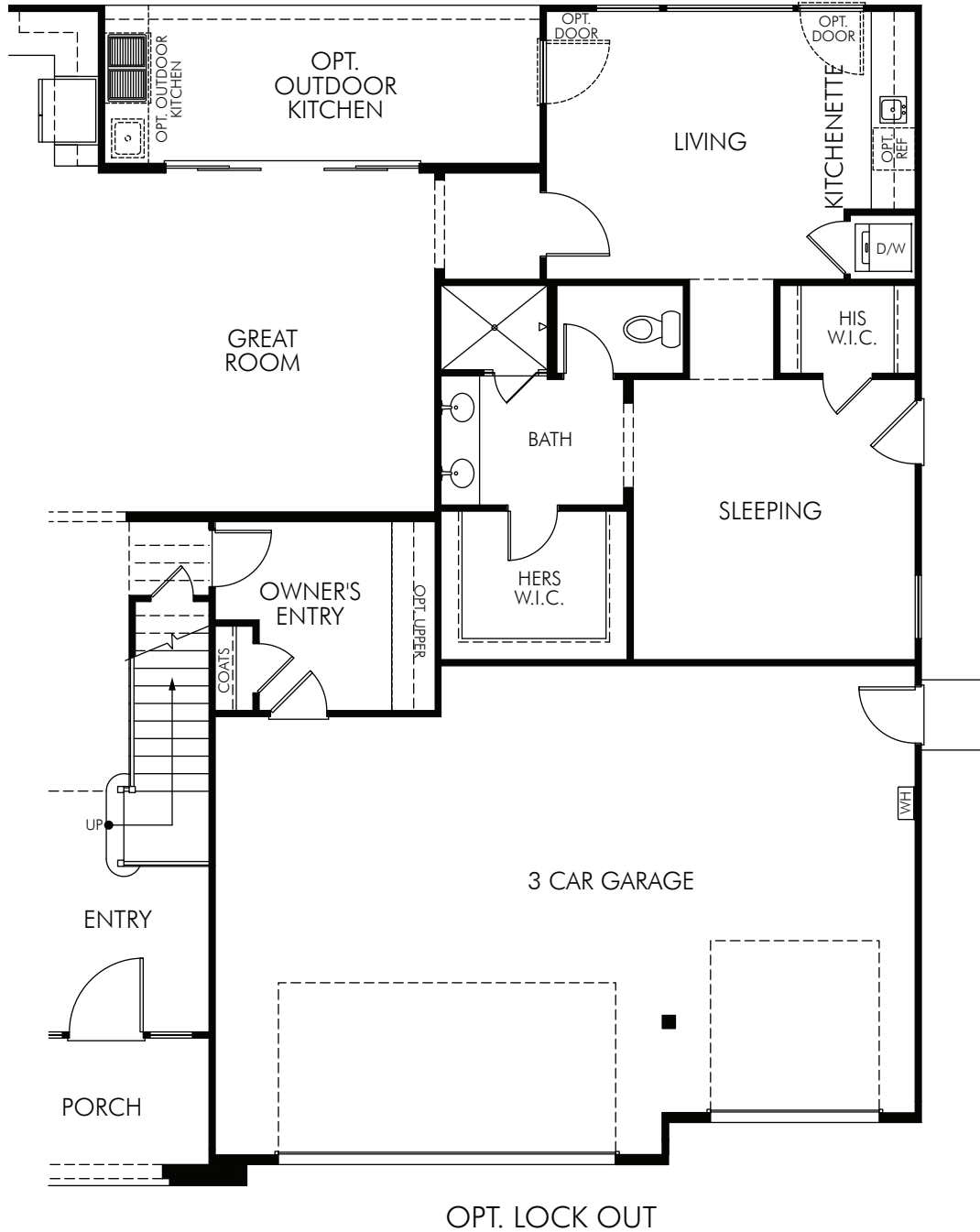
## Creekside Plan 1

**MeritageHomes**® 877-Ask-Meritage (275.6374) | [meritagehomes.com](http://meritagehomes.com)

Floorplan rendering is an artist's conceptual rendering intended to provide a general overview. It does not constitute actual plans and specifications for any home and may depict elevations, options, upgrades, features, and amenities that are not included as part of the home and/or may not be available for all lots and/or in all communities. The floorplan rendering may not be drawn to scale. Any dimensions on the floorplan rendering are approximate and actual dimensions may vary. Plans and specifications are subject to change without notice. Homes may be constructed with a floorplan that is the reverse of the floorplan rendering. Plans are copyrighted and/or otherwise subject to intellectual property rights of Meritage and/or others and cannot be reproduced or copied without Meritage's prior written consent.



# Creekside: 3401



Creekside  
Plan 1

**MeritageHomes**® 877-Ask-Meritage (275.6374) | [meritagehomes.com](http://meritagehomes.com)

Floorplan rendering is an artist's conceptual rendering intended to provide a general overview. It does not constitute actual plans and specifications for any home and may depict elevations, options, upgrades, features, and amenities that are not included as part of the home and/or may not be available for all lots and/or in all communities. The floorplan rendering may not be drawn to scale. Any dimensions on the floorplan rendering are approximate and actual dimensions may vary. Plans and specifications are subject to change without notice. Homes may be constructed with a floorplan that is the reverse of the floorplan rendering. Plans are copyrighted and/or otherwise subject to intellectual property rights of Meritage and/or others and cannot be reproduced or copied without Meritage's prior written consent.

