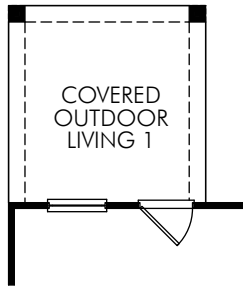


**The Elderberry | Plan G223 | First Floor**  
**2,312 sq. ft. | 3 Bed | 2 Bath | 3 Car Garage | 1 Story**

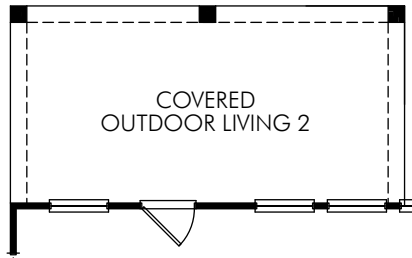
**FLEX LIVING OPTIONS:** Study. Media. Study 2. Master Retreat. Bay at Master. Bedroom 5 Suite with Bath 4 & Bonus Room. Covered Outdoor Living. Covered Outdoor Living 2. Blister Bath. Fireplace. Outdoor Living with Fireplace. Master Bath 3.

REV 05/18  
 SAN Valencia/G223

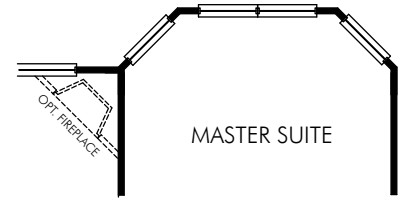
Any floorplan and/or elevation rendering is an artist's conceptual rendering intended to provide a general overview, but any such rendering does not constitute actual plans and specifications for any home. Renderings and pictures are representative and may depict floorplans, elevations, options, upgrades, landscaping, and other features and amenities that are not included as part of all homes and/or may not be available for all lots and/or in all communities. Renderings may not be drawn to scale. Any provided dimensions are approximate and actual dimensions may vary. Homes may be constructed with a floorplan that is the reverse of the floorplan rendering. Plans are copyrighted and/or otherwise subject to intellectual property rights of Meritage and/or others and cannot be reproduced or copied without Meritage's prior written consent. Plans and specifications, home features, and community information are subject to change, and homes to prior sale, at any time without notice or obligation. Additionally, deviations and variations may exist in any constructed home, including, without limitation: (i) substitution of materials and equipment of substantially equal or better quality; (ii) minor style, lot orientation, and color changes; (iii) minor variances in square footage and in room and space dimensions, and in window, door, utility outlet, and other improvement locations; (iv) changes as may be required by any state, federal, county, or local governmental authority in order to accommodate requested selections and/or options; and (v) value engineering and field changes.



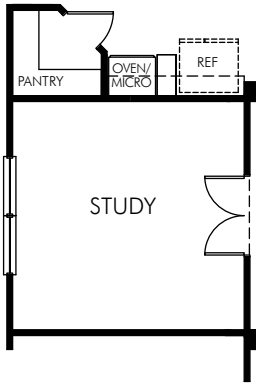
① OPT. COVERED OUTDOOR LIVING 1  
OUT1010



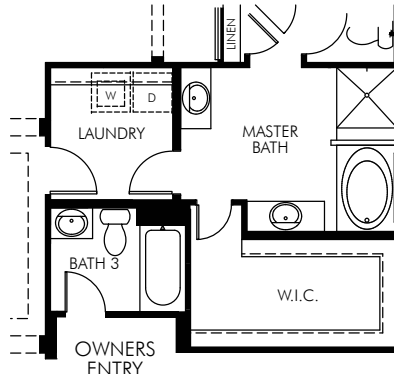
② OPT. COVERED OUTDOOR LIVING 2  
OUT2010



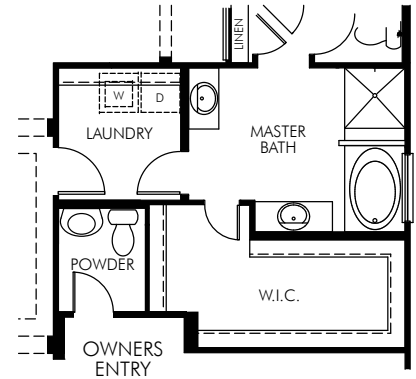
③ OPT. BAY WINDOW AT MASTER SUITE  
BAY0005



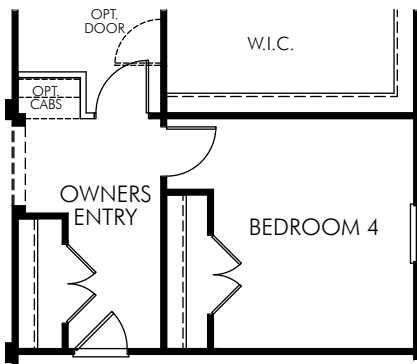
④ OPT. STUDY  
RMO0015



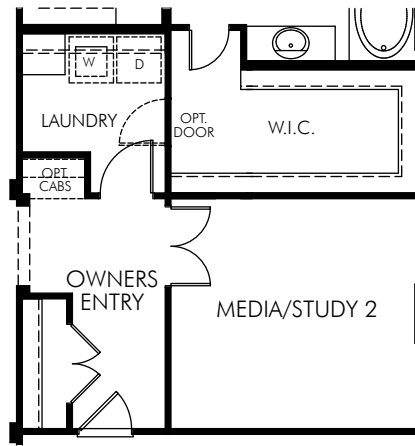
⑤ OPT. BATH 3  
BTH0130



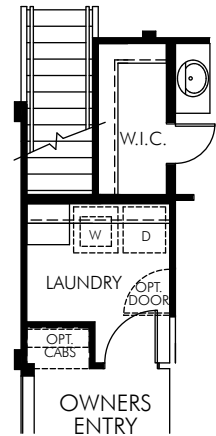
⑥ OPT. POWDER  
BTH0313



⑦ OPT. BEDROOM 4  
BED0400



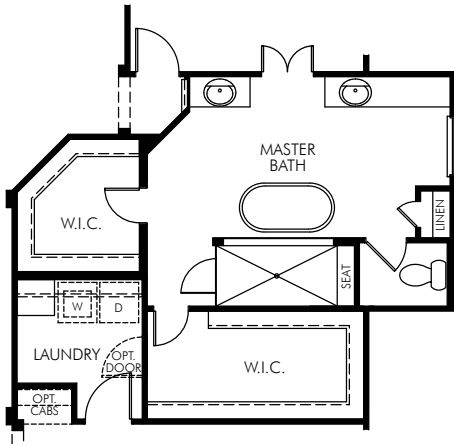
⑧ OPT. MEDIA/STUDY 2  
RMO0012 RMO0034



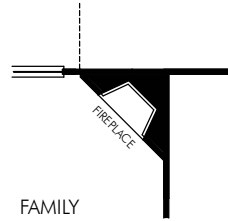
⑨ STAIR LOCATION WITH SECOND FLOOR OPTIONS

**The Elderberry | Plan G223 | First Floor Options**  
**2,312 sq. ft. | 3 Bed | 2 Bath | 3 Car Garage | 1 Story**

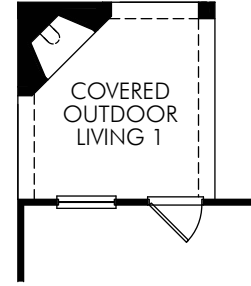
Any floorplan and/or elevation rendering is an artist's conceptual rendering intended to provide a general overview, but any such rendering does not constitute actual plans and specifications for any home. Renderings and pictures are representative and may depict floorplans, elevations, options, upgrades, landscaping, and other features and amenities that are not included as part of all homes and/or may not be available for all lots and/or in all communities. Renderings may not be drawn to scale. Any provided dimensions are approximate and actual dimensions may vary. Homes may be constructed with a floorplan that is the reverse of the floorplan rendering. Plans are copyrighted and/or otherwise subject to intellectual property rights of Meritage and/or others and cannot be reproduced or copied without Meritage's prior written consent. Plans and specifications, home features, and community information are subject to change, and homes to prior sale, at any time without notice or obligation. Additionally, deviations and variations may exist in any constructed home, including, without limitation: (i) substitution of materials and equipment of substantially equal or better quality; (ii) minor style, lot orientation, lot orientation, and color changes; (iii) minor variances in square footage and in room and space dimensions, and in window, door, utility outlet, and other improvement locations; (iv) changes as may be required by any state, federal, county, or local governmental authority in order to accommodate requested selections and/or options; and (v) value engineering and field changes.



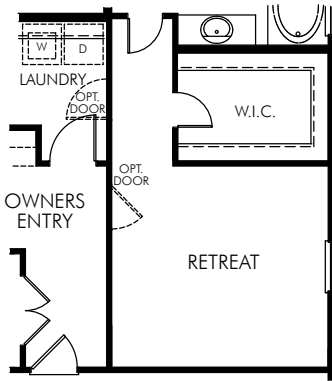
⑩ OPT. BLISTER BATH



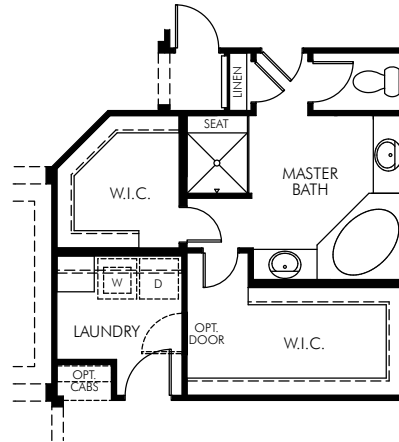
⑪ OPT. FIREPLACE  
FPO0108



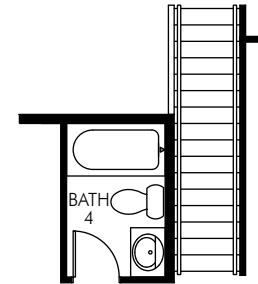
⑬ OPT. OUTDOOR LIVING 1  
W/ FIREPLACE  
FPO0130



⑬ OPT. MASTER RETREAT  
RMO0041



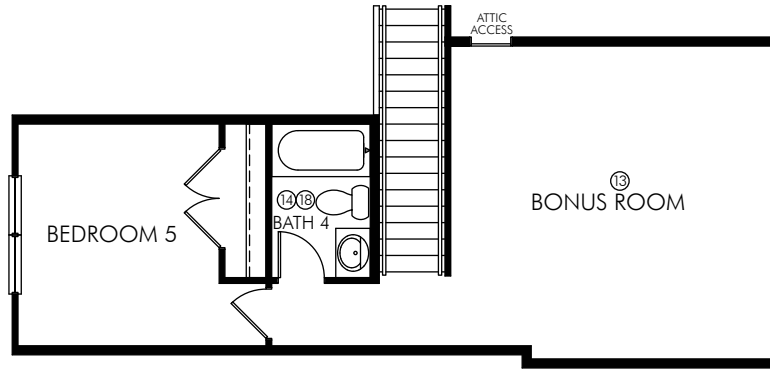
⑰ OPT. MASTER BATH 3  
BTH0105



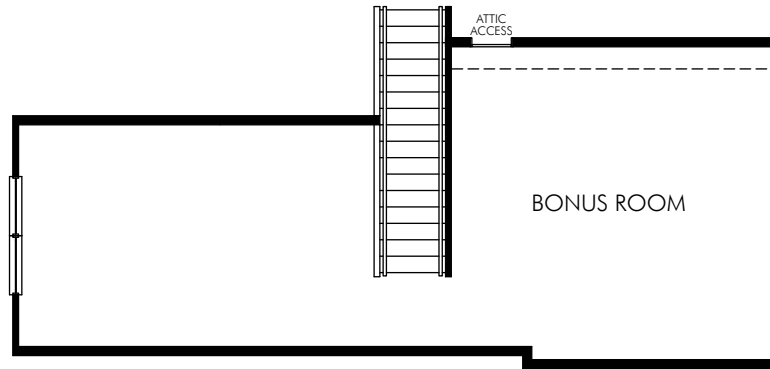
⑱ OPT. BATH 4 AT BONUS ROOM  
BTH0132

**The Elderberry | Plan G223 | First Floor Options**  
**2,312 sq. ft. | 3 Bed | 2 Bath | 3 Car Garage | 1 Story**

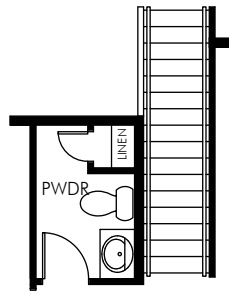
Any floorplan and/or elevation rendering is an artist's conceptual rendering intended to provide a general overview, but any such rendering does not constitute actual plans and specifications for any home. Renderings and pictures are representative and may depict floorplans, elevations, options, upgrades, landscaping, and other features and amenities that are not included as part of all homes and/or may not be available for all lots and/or in all communities. Renderings may not be drawn to scale. Any provided dimensions are approximate and actual dimensions may vary. Homes may be constructed with a floorplan that is the reverse of the floorplan rendering. Plans are copyrighted and/or otherwise subject to intellectual property rights of Meritage and/or others and cannot be reproduced or copied without Meritage's prior written consent. Plans and specifications, home features, and community information are subject to change, and homes to prior sale, at any time without notice or obligation. Additionally, deviations and variations may exist in any constructed home, including, without limitation: (i) substitution of materials and equipment of substantially equal or better quality; (ii) minor style, lot orientation, and color changes; (iii) minor variances in square footage and in room and space dimensions, and in window, door, utility outlet, and other improvement locations; (iv) changes as may be required by any state, federal, county, or local governmental authority in order to accommodate requested selections and/or options; and (v) value engineering and field changes.



⑫ OPT. BEDROOM 5 SUITE  
BED0503



⑬ OPT. BONUS ROOM  
RMO0032



⑭ OPT. POWDER AT BONUS ROOM  
BTH 0303

**The Elderberry | Plan G223 | Second Floor Options**  
**2,312 sq. ft. | 3 Bed | 2 Bath | 3 Car Garage | 1 Story**

Any floorplan and/or elevation rendering is an artist's conceptual rendering intended to provide a general overview, but any such rendering does not constitute actual plans and specifications for any home. Renderings and pictures are representative and may depict floorplans, elevations, options, upgrades, landscaping, and other features and amenities that are not included as part of all homes and/or may not be available for all lots and/or in all communities. Renderings may not be drawn to scale. Any provided dimensions are approximate and actual dimensions may vary. Homes may be constructed with a floorplan that is the reverse of the floorplan rendering. Plans are copyrighted and/or otherwise subject to intellectual property rights of Meritage and/or others and cannot be reproduced or copied without Meritage's prior written consent. Plans and specifications, home features, and community information are subject to change, and homes to prior sale, at any time without notice or obligation. Additionally, deviations and variations may exist in any constructed home, including, without limitation: (i) substitution of materials and equipment of substantially equal or better quality; (ii) minor style, lot orientation, and color changes; (iii) minor variances in square footage and in room and space dimensions, and in window, door, utility outlet, and other improvement locations; (iv) changes as may be required by any state, federal, county, or local governmental authority in order to accommodate requested selections and/or options; and (v) value engineering and field changes.