

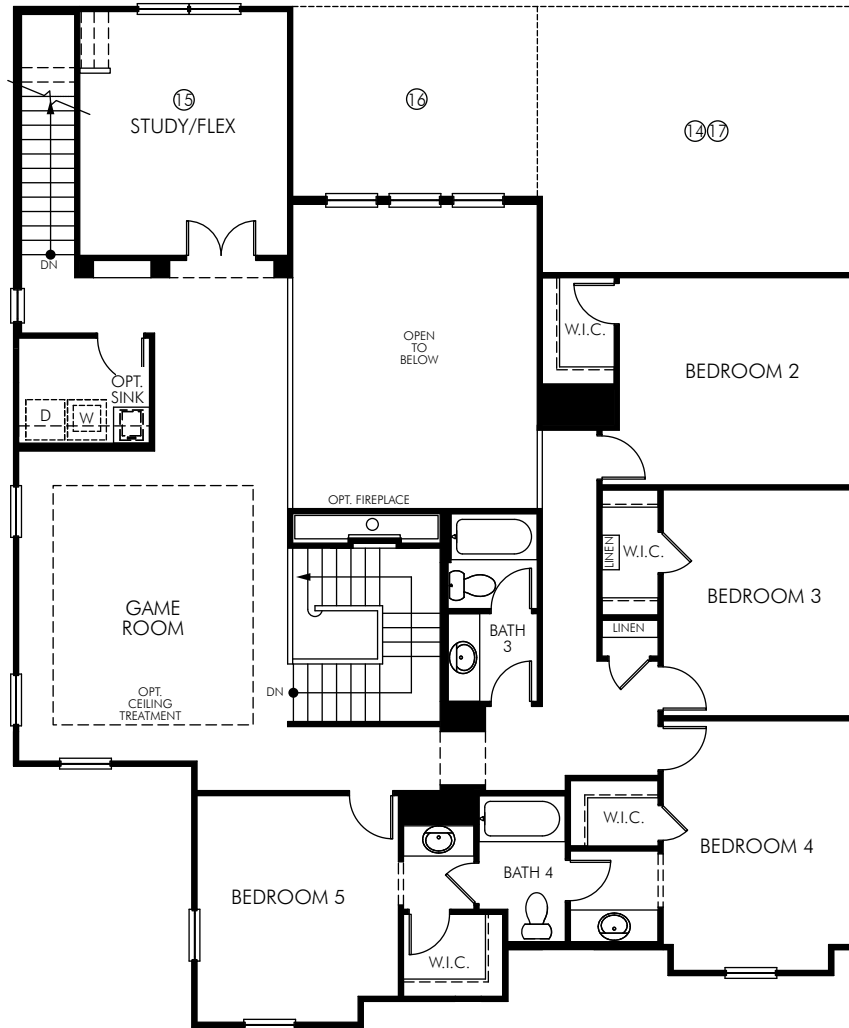
**The Jasmine | Plan 5384 | First Floor**

**3,862 sq. ft. | 5 Bed | 3.5 Bath | 3 Car Garage | 2 Story**

**FLEX LIVING OPTIONS:** Sitting Bay at Master. Bay at Master. Bay at Casual Dining. Office/Exercise Room. Live-in Suite with Bath. Downstairs Laundry. Covered Outdoor Living 2. Covered Outdoor Living 2 W/ Kitchen. Covered Outdoor Living 2 W/Fireplace. Fireplace. Media Room 1. Blister Bath. Bedroom 6 W/ Bath & Powder.

REV 05/18  
SAN Valencia/5384 VE

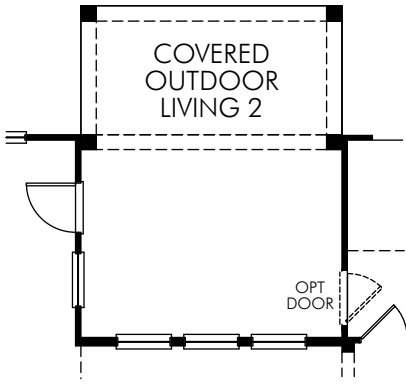
Any floorplan and/or elevation rendering is an artist's conceptual rendering intended to provide a general overview, but any such rendering does not constitute actual plans and specifications for any home. Renderings and pictures are representative and may depict floorplans, elevations, options, upgrades, landscaping, and other features and amenities that are not included as part of all homes and/or may not be available for all lots and/or in all communities. Renderings may not be drawn to scale. Any provided dimensions are approximate and actual dimensions may vary. Homes may be constructed with a floorplan that is the reverse of the floorplan rendering. Plans are copyrighted and/or otherwise subject to intellectual property rights of Meritage and/or others and cannot be reproduced or copied without Meritage's prior written consent. Plans and specifications, home features, and community information are subject to change, and homes to prior sale, at any time without notice or obligation. Additionally, deviations and variations may exist in any constructed home, including, without limitation: (i) substitution of materials and equipment of substantially equal or better quality; (ii) minor style, lot orientation, and color changes; (iii) minor variances in square footage and in room and space dimensions, and in window, door, utility outlet, and other improvement locations; (iv) changes as may be required by any state, federal, county, or local governmental authority in order to accommodate requested selections and/or options; and (v) value engineering and field changes.



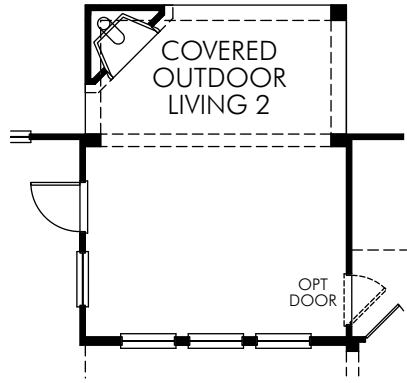
**The Jasmine | Plan 5384 | Second Floor**  
**3,862 sq. ft. | 5 Bed | 3.5 Bath | 3 Car Garage | 2 Story**

**FLEX LIVING OPTIONS:** 2nd Master Suite with 2nd Master Bath. Media Room 2. Media Room 3.  
2nd Master Suite with Covered Balcony and Sun Deck.

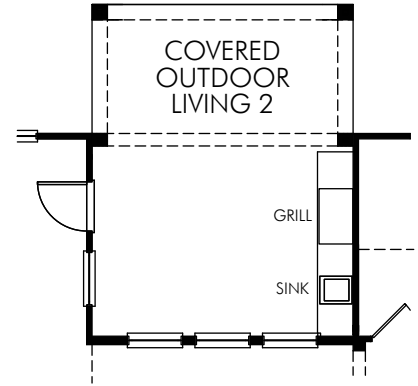
Any floorplan and/or elevation rendering is an artist's conceptual rendering intended to provide a general overview, but any such rendering does not constitute actual plans and specifications for any home. Renderings and pictures are representative and may depict floorplans, elevations, options, upgrades, landscaping, and other features and amenities that are not included as part of all homes and/or may not be available for all lots and/or in all communities. Renderings may not be drawn to scale. Any provided dimensions are approximate and actual dimensions may vary. Homes may be constructed with a floorplan that is the reverse of the floorplan rendering. Plans are copyrighted and/or otherwise subject to intellectual property rights of Meritage and/or others and cannot be reproduced or copied without Meritage's prior written consent. Plans and specifications, home features, and community information are subject to change, and homes to prior sale, at any time without notice or obligation. Additionally, deviations and variations may exist in any constructed home, including, without limitation: (i) substitution of materials and equipment of substantially equal or better quality; (ii) minor style, lot orientation, and color changes; (iii) minor variances in square footage and in room and space dimensions, and in window, door, utility outlet, and other improvement locations; (iv) changes as may be required by any state, federal, county, or local governmental authority in order to accommodate requested selections and/or options; and (v) value engineering and field changes.



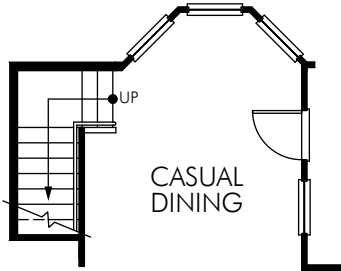
① OPT. COVERED  
OUTDOOR LIVING 2  
OUT1507



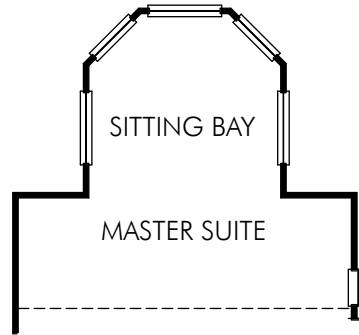
② OPT. COVERED  
OUTDOOR LIVING 2 W/  
FIREPLACE  
FPO0130



③ OPT. COVERED  
OUTDOOR  
LIVING 2 W/ KITCHEN  
KIT0002



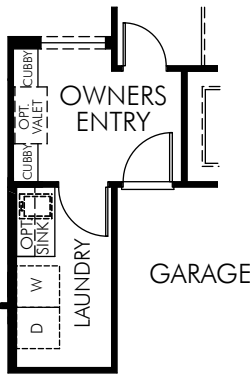
④ OPT. BAY AT  
CASUAL DINING  
BAY0002



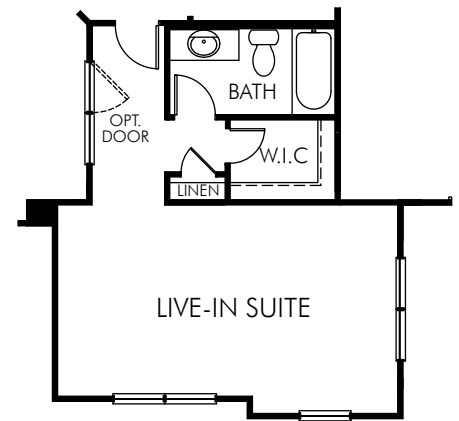
⑤ OPT. SITTING BAY AT  
MASTER SUITE  
RMO0023



⑥ OPT. BAY AT  
MASTER SUITE  
BAY0005



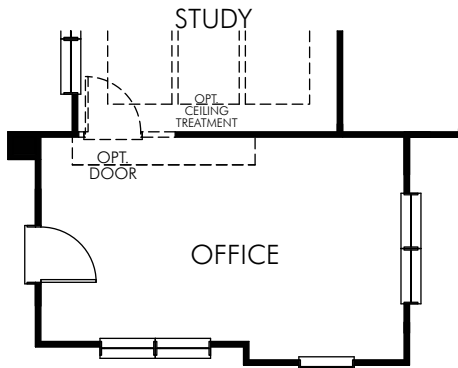
⑦ OPT. LAUNDRY  
RMO0037  
CANNOT BE SELECTED WITH BTH0303



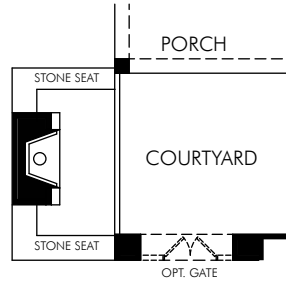
⑧ OPT. LIVE-IN SUITE  
BED0803  
WINDOW CONFIGURATIONS  
VARY BY ELEVATION

**The Jasmine | Plan 5384 | First Floor Options**  
**3,862 sq. ft. | 5 Bed | 3.5 Bath | 3 Car Garage | 2 Story**

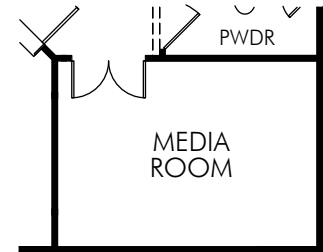
Any floorplan and/or elevation rendering is an artist's conceptual rendering intended to provide a general overview, but any such rendering does not constitute actual plans and specifications for any home. Renderings and pictures are representative and may depict floorplans, elevations, options, upgrades, landscaping, and other features and amenities that are not included as part of all homes and/or may not be available for all lots and/or in all communities. Renderings may not be drawn to scale. Any provided dimensions are approximate and actual dimensions may vary. Homes may be constructed with a floorplan that is the reverse of the floorplan rendering. Plans are copyrighted and/or otherwise subject to intellectual property rights of Meritage and/or others and cannot be reproduced or copied without Meritage's prior written consent. Plans and specifications, home features, and community information are subject to change, and homes to prior sale, at any time without notice or obligation. Additionally, deviations and variations may exist in any constructed home, including, without limitation: (i) substitution of materials and equipment of substantially equal or better quality; (ii) minor style, lot orientation, and color changes; (iii) minor variances in square footage and in room and space dimensions, and in window, door, utility outlet, and other improvement locations; (iv) changes as may be required by any state, federal, county, or local governmental authority in order to accommodate requested selections and/or options; and (v) value engineering and field changes.



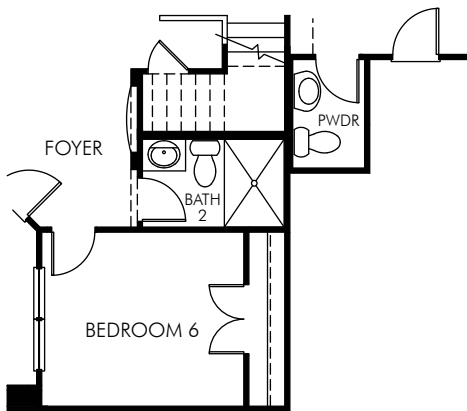
⑨ OPT. OFFICE/EXERCISE  
RMO0011



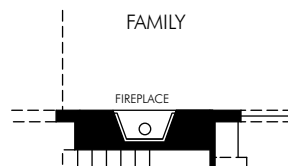
⑩ OPT. COURTYARD  
FIREPLACE  
CYD0001



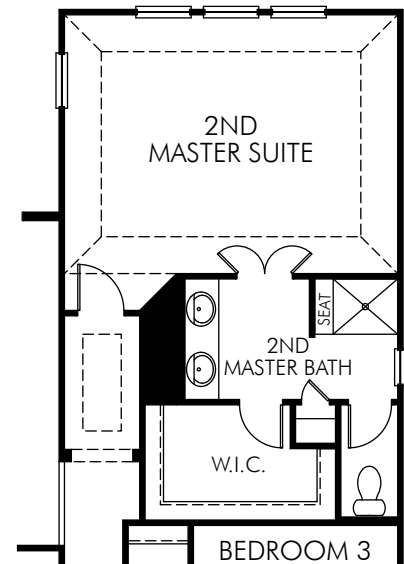
⑪ OPT. MEDIA ROOM 1  
RMO0012



⑫ OPT. BEDROOM 6 W/ BATH &  
OPT. POWDER  
BED0601



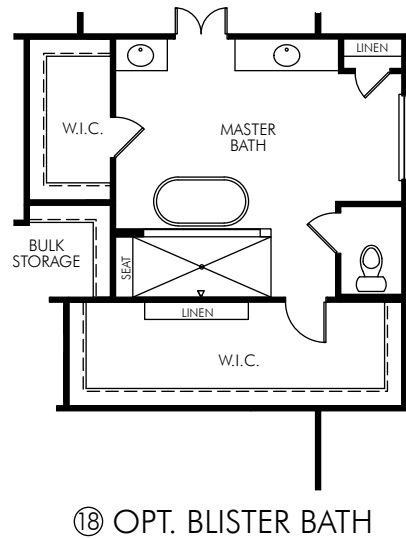
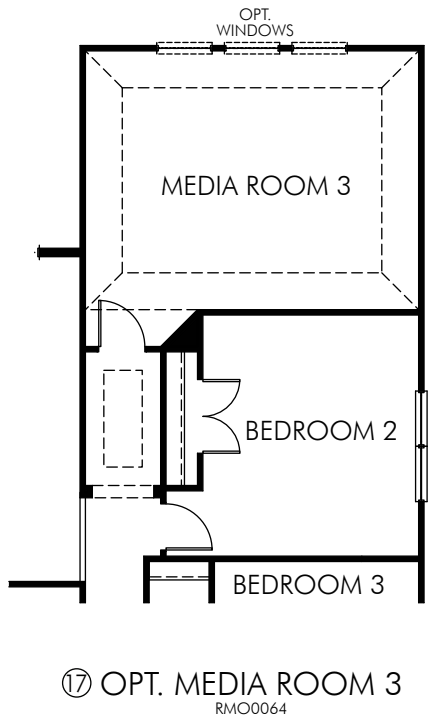
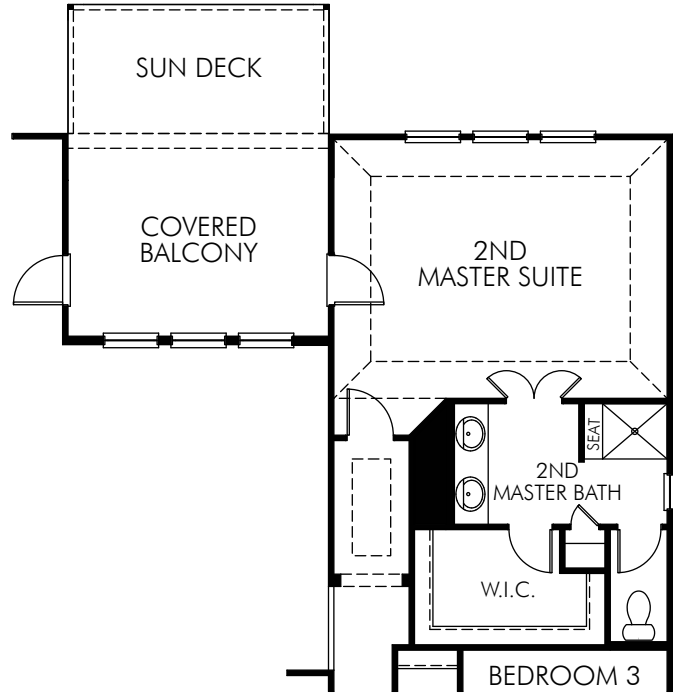
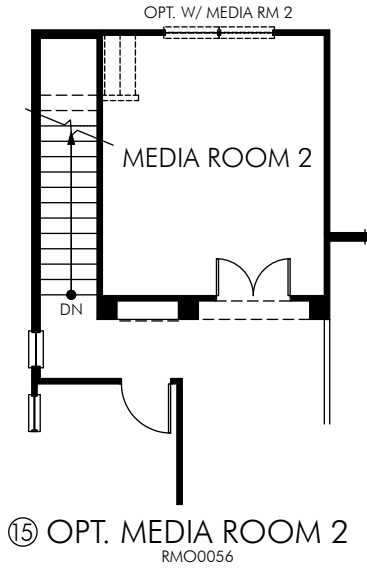
⑬ OPT. FIREPLACE  
FP00108



⑭ OPT. 2ND MASTER SUITE  
BED0700

**The Jasmine | Plan 5384 | First and Second Floor Options**  
**3,862 sq. ft. | 5 Bed | 3.5 Bath | 3 Car Garage | 2 Story**

Any floorplan and/or elevation rendering is an artist's conceptual rendering intended to provide a general overview, but any such rendering does not constitute actual plans and specifications for any home. Renderings and pictures are representative and may depict floorplans, elevations, options, upgrades, landscaping, and other features and amenities that are not included as part of all homes and/or may not be available for all lots and/or in all communities. Renderings may not be drawn to scale. Any provided dimensions are approximate and actual dimensions may vary. Homes may be constructed with a floorplan that is the reverse of the floorplan rendering. Plans are copyrighted and/or otherwise subject to intellectual property rights of Meritage and/or others and cannot be reproduced or copied without Meritage's prior written consent. Plans and specifications, home features, and community information are subject to change, and homes to prior sale, at any time without notice or obligation. Additionally, deviations and variations may exist in any constructed home, including, without limitation: (i) substitution of materials and equipment of substantially equal or better quality; (ii) minor style, lot orientation, and color changes; (iii) minor variances in square footage and in room and space dimensions, and in window, door, utility outlet, and other improvement locations; (iv) changes as may be required by any state, federal, county, or local governmental authority in order to accommodate requested selections and/or options; and (v) value engineering and field changes.



**The Jasmine | Plan 5384 | First and Second Floor Options**  
**3,862 sq. ft. | 5 Bed | 3.5 Bath | 3 Car Garage | 2 Story**

Any floorplan and/or elevation rendering is an artist's conceptual rendering intended to provide a general overview, but any such rendering does not constitute actual plans and specifications for any home. Renderings and pictures are representative and may depict floorplans, elevations, options, upgrades, landscaping, and other features and amenities that are not included as part of all homes and/or may not be available for all lots and/or in all communities. Renderings may not be drawn to scale. Any provided dimensions are approximate and actual dimensions may vary. Homes may be constructed with a floorplan that is the reverse of the floorplan rendering. Plans are copyrighted and/or otherwise subject to intellectual property rights of Meritage and/or others and cannot be reproduced or copied without Meritage's prior written consent. Plans and specifications, home features, and community information are subject to change, and homes to prior sale, at any time without notice or obligation. Additionally, deviations and variations may exist in any constructed home, including, without limitation: (i) substitution of materials and equipment of substantially equal or better quality; (ii) minor style, lot orientation, and color changes; (iii) minor variances in square footage and in room and space dimensions, and in window, door, utility outlet, and other improvement locations; (iv) changes as may be required by any state, federal, county, or local governmental authority in order to accommodate requested selections and/or options; and (v) value engineering and field changes.