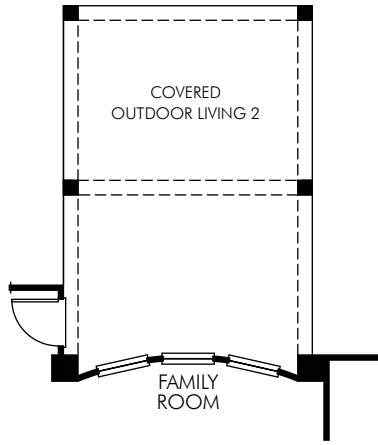


The Waterleaf | Plan 5282 | First Floor
2,732 sq. ft. | 4 Bed | 3 Bath | 2 Car Garage | 1 Story

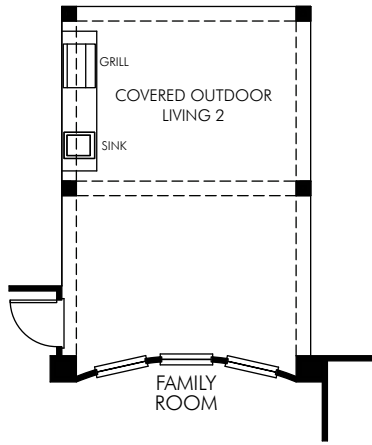
FLEX LIVING OPTIONS: Bay at Master. Master Retreat. Bay at Casual. Dining. Game/Media Room. Study. Bedroom 5. Wine Room. Pocket Office. 2nd Master with Bath 4. Bonus Room. Game Room with Flex Powder. Blister Bath. Game Room with Bedroom 6 & Bath 5. Covered Outdoor Living 1. Fireplace. Covered Outdoor Kitchen. Covered Outdoor Living 2 w/Fireplace. Covered Outdoor Living 2.

REV. 05/18
 SAN Valencia/5282

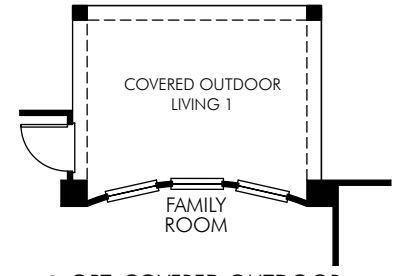
Any floorplan and/or elevation rendering is an artist's conceptual rendering intended to provide a general overview, but any such rendering does not constitute actual plans and specifications for any home. Renderings and pictures are representative and may depict floorplans, elevations, options, upgrades, landscaping, and other features and amenities that are not included as part of all homes and/or may not be available for all lots and/or in all communities. Renderings may not be drawn to scale. Any provided dimensions are approximate and actual dimensions may vary. Homes may be constructed with a floorplan that is the reverse of the floorplan rendering. Plans are copyrighted and/or otherwise subject to intellectual property rights of Meritage and/or others and cannot be reproduced or copied without Meritage's prior written consent. Plans and specifications, home features, and community information are subject to change, and homes to prior sale, at any time without notice or obligation. Additionally, deviations and variations may exist in any constructed home, including, without limitation: (i) substitution of materials and equipment of substantially equal or better quality; (ii) minor style, lot orientation, and color changes; (iii) minor variances in square footage and in room and space dimensions, and in window, door, utility outlet, and other improvement locations; (iv) changes as may be required by any state, federal, county, or local governmental authority in order to accommodate requested selections and/or options; and (v) value engineering and field changes.



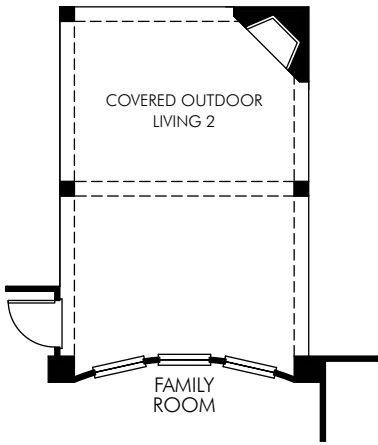
① OPT. COVERED OUTDOOR LIVING 2
OUT2810



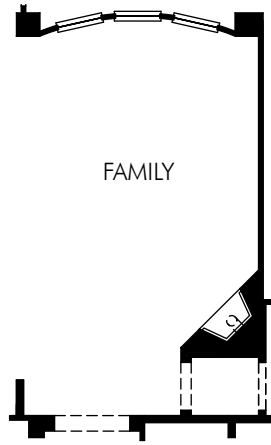
② OPT. COVERED OUTDOOR KITCHEN
KIT0001



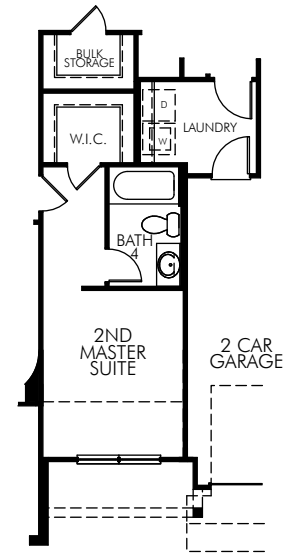
③ OPT. COVERED OUTDOOR LIVING 1
OUT1010



④ OPT. COVERED OUTDOOR LIVING 2 WITH FIREPLACE
FPO0130



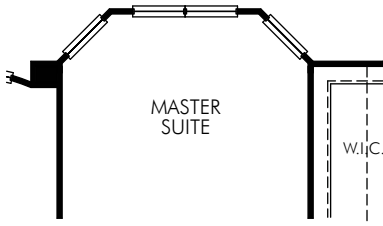
⑤ OPT. FIREPLACE



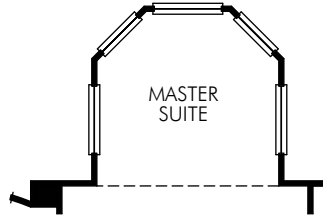
⑥ OPT. 2ND MASTER SUITE WITH BATH 4
BED0700
WINDOW CONFIGURATIONS VARY BY ELEVATION

The Waterleaf | Plan 5282 | First Floor Options
2,732 sq. ft. | 4 Bed | 3 Bath | 2 Car Garage | 1 Story

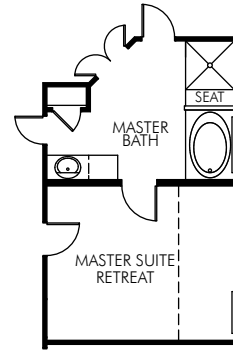
Any floorplan and/or elevation rendering is an artist's conceptual rendering intended to provide a general overview, but any such rendering does not constitute actual plans and specifications for any home. Renderings and pictures are representative and may depict floorplans, elevations, options, upgrades, landscaping, and other features and amenities that are not included as part of all homes and/or may not be available for all lots and/or in all communities. Renderings may not be drawn to scale. Any provided dimensions are approximate and actual dimensions may vary. Homes may be constructed with a floorplan that is the reverse of the floorplan rendering. Plans are copyrighted and/or otherwise subject to intellectual property rights of Meritage and/or others and cannot be reproduced or copied without Meritage's prior written consent. Plans and specifications, home features, and community information are subject to change, and homes to prior sale, at any time without notice or obligation. Additionally, deviations and variations may exist in any constructed home, including, without limitation: (i) substitution of materials and equipment of substantially equal or better quality; (ii) minor style, lot orientation, and color changes; (iii) minor variances in square footage and in room and space dimensions, and in window, door, utility outlet, and other improvement locations; (iv) changes as may be required by any state, federal, county, or local governmental authority in order to accommodate requested selections and/or options; and (v) value engineering and field changes.



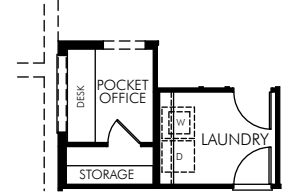
① OPT. BAY AT MASTER
BAY0005



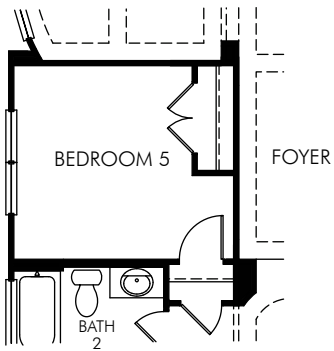
② OPT. SITTING BAY AT MASTER
RMO0023



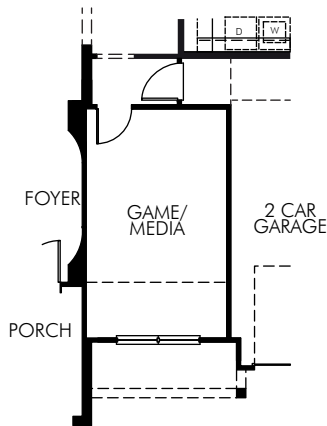
③ OPT. MASTER RETREAT
RMO0041



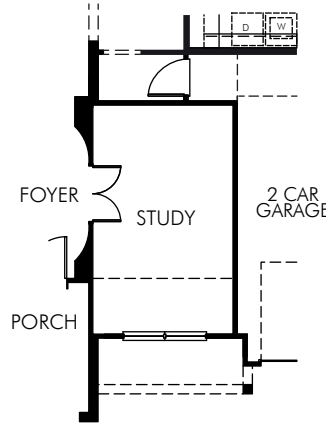
④ OPT. POCKET OFFICE
RMO0059



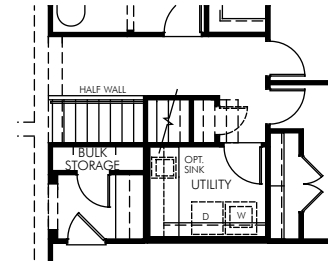
⑤ OPT. BEDROOM 5
BED0500



⑥ OPT. GAME/MEDIA
WINDOW CONFIGURATIONS
VARY BY ELEVATION
RMO0009



⑦ OPT. STUDY
WINDOW CONFIGURATIONS
VARY BY ELEVATION
RMO0015



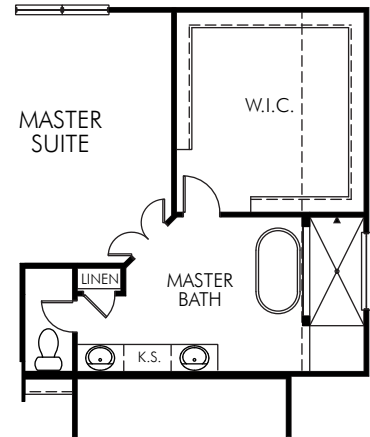
⑧ OPT. STAIR LOCATION WITH
SECOND FLOOR OPTIONS



⑨ OPT. WINE ROOM
RMO0055



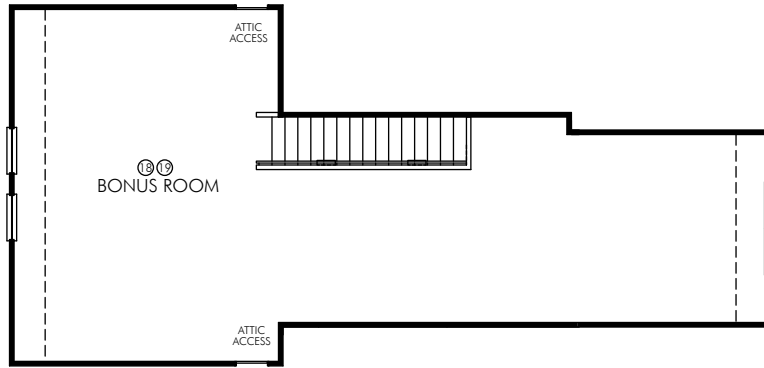
⑩ OPT. BAY AT
CASUAL DINING
BAY0008



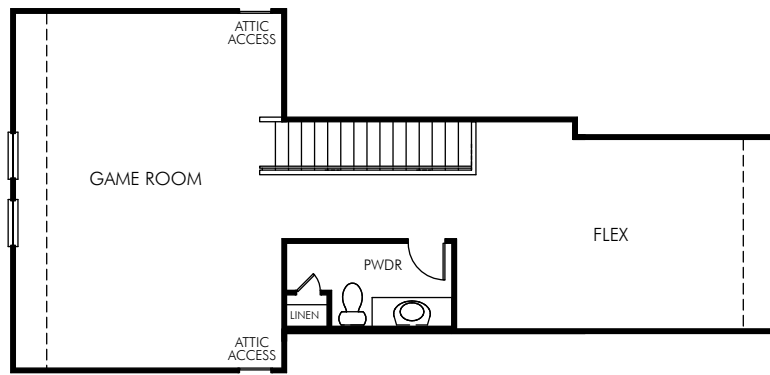
⑪ OPT BLISTER BATH

The Waterleaf | Plan 5282 | First Floor Options
2,732 sq. ft. | 4 Bed | 3 Bath | 2 Car Garage | 1 Story

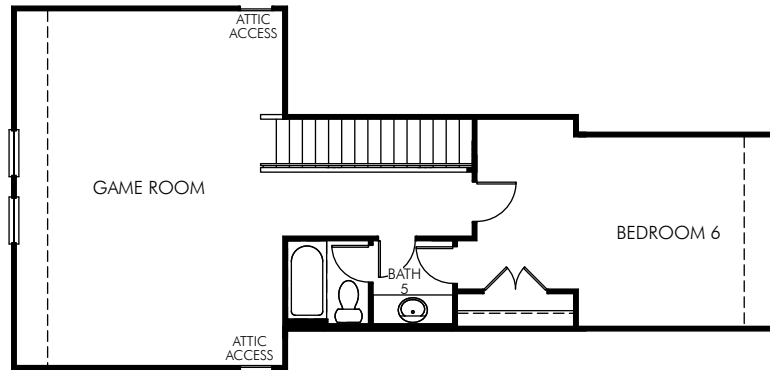
Any floorplan and/or elevation rendering is an artist's conceptual rendering intended to provide a general overview, but any such rendering does not constitute actual plans and specifications for any home. Renderings and pictures are representative and may depict floorplans, elevations, options, upgrades, landscaping, and other features and amenities that are not included as part of all homes and/or may not be available for all lots and/or in all communities. Renderings may not be drawn to scale. Any provided dimensions are approximate and actual dimensions may vary. Homes may be constructed with a floorplan that is the reverse of the floorplan rendering. Plans are copyrighted and/or otherwise subject to intellectual property rights of Meritage and/or others and cannot be reproduced or copied without Meritage's prior written consent. Plans and specifications, home features, and community information are subject to change, and homes to prior sale, at any time without notice or obligation. Additionally, deviations and variations may exist in any constructed home, including, without limitation: (i) substitution of materials and equipment of substantially equal or better quality; (ii) minor style, lot orientation, and color changes; (iii) minor variances in square footage and in room and space dimensions, and in window, door, utility outlet, and other improvement locations; (iv) changes as may be required by any state, federal, county, or local governmental authority in order to accommodate requested selections and/or options; and (v) value engineering and field changes.



OPT. BONUS ROOM
RMO0032



OPT. GAME WITH FLEX/POWDER
RMO0053



OPT. GAME WITH BEDROOM 6/BATH 5
BED0603

The Waterleaf | Plan 5282 | Second Floor Options
2,732 sq. ft. | 4 Bed | 3 Bath | 2 Car Garage | 1 Story

Any floorplan and/or elevation rendering is an artist's conceptual rendering intended to provide a general overview, but any such rendering does not constitute actual plans and specifications for any home. Renderings and pictures are representative and may depict floorplans, elevations, options, upgrades, landscaping, and other features and amenities that are not included as part of all homes and/or may not be available for all lots and/or in all communities. Renderings may not be drawn to scale. Any provided dimensions are approximate and actual dimensions may vary. Homes may be constructed with a floorplan that is the reverse of the floorplan rendering. Plans are copyrighted and/or otherwise subject to intellectual property rights of Meritage and/or others and cannot be reproduced or copied without Meritage's prior written consent. Plans and specifications, home features, and community information are subject to change, and homes to prior sale, at any time without notice or obligation. Additionally, deviations and variations may exist in any constructed home, including, without limitation: (i) substitution of materials and equipment of substantially equal or better quality; (ii) minor style, lot orientation, and color changes; (iii) minor variances in square footage and in room and space dimensions, and in window, door, utility outlet, and other improvement locations; (iv) changes as may be required by any state, federal, county, or local governmental authority in order to accommodate requested selections and/or options; and (v) value engineering and field changes.