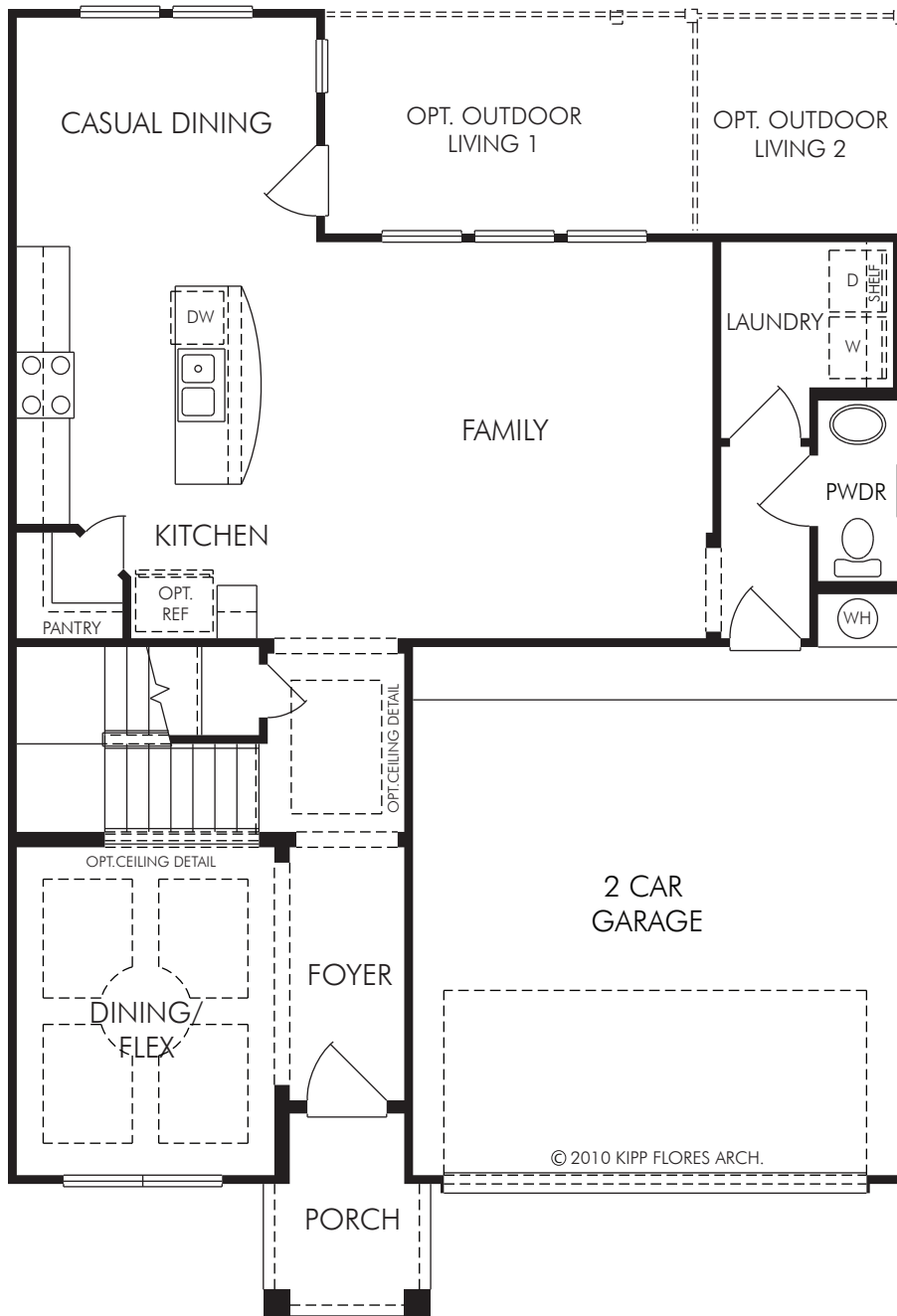


Venice



FIRST FLOOR PLAN

THE VENICE • PLAN 3226

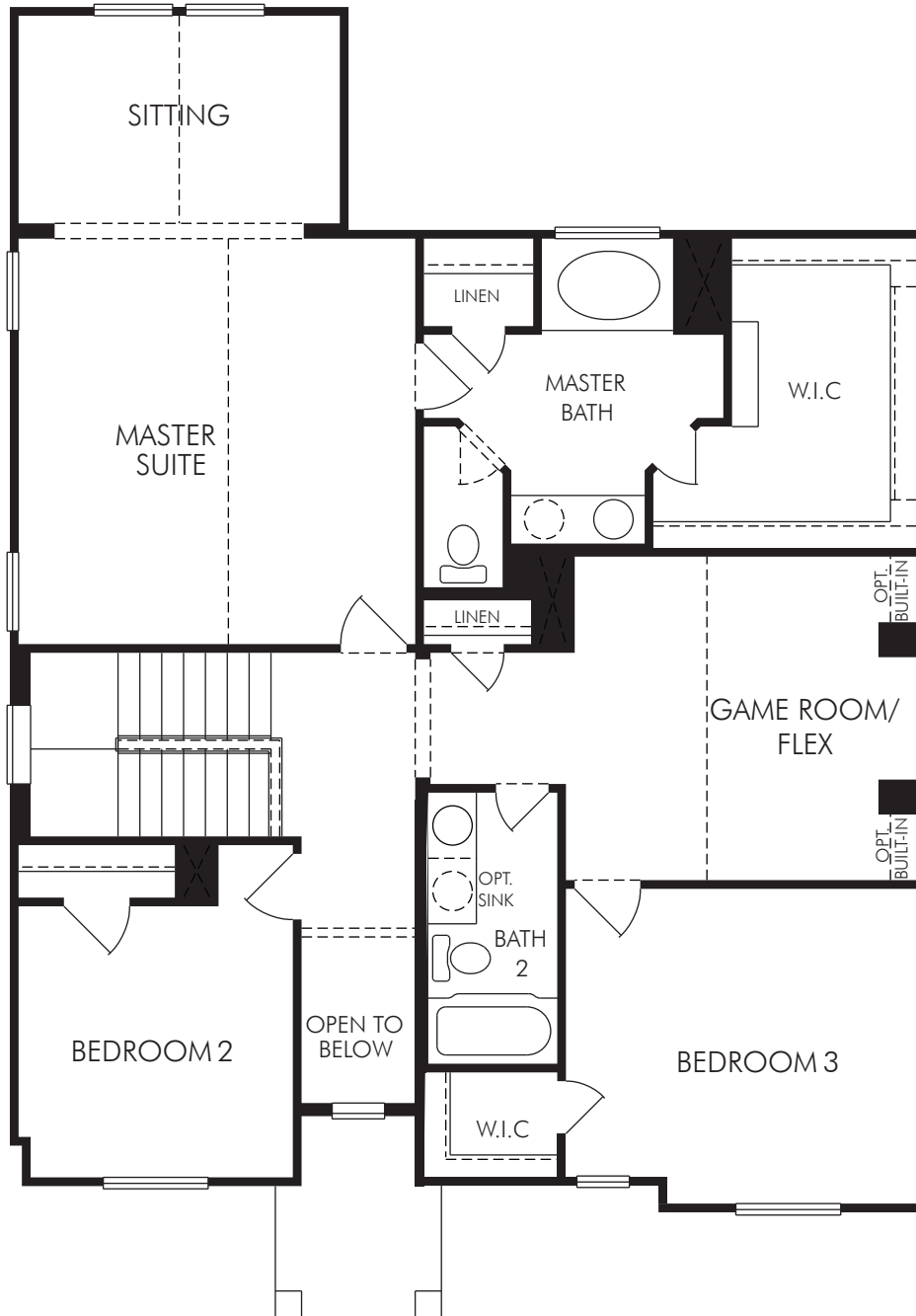
2,223 sq. ft. • Two Story • 3 Bedroom • 2.5 Bath • Dining • Living • Game Room • Flex Living • 2 Car Garage

MeritageHomes® 877-Ask-Meritage (275.6374) | meritagehomes.com

Floorplan rendering is an artist's conceptual rendering intended to provide a general overview. It does not constitute actual plans and specifications for any home and may depict elevations, options, upgrades, features, and amenities that are not included as part of the home and/or may not be available for all lots and/or in all communities. The floorplan rendering may not be drawn to scale. Any dimensions on the floorplan rendering are approximate and actual dimensions may vary. Plans and specifications are subject to change without notice. Homes may be constructed with a floorplan that is the reverse of the floorplan rendering. Plans are copyrighted and/or otherwise subject to intellectual property rights of Meritage and/or others and cannot be reproduced or copied without Meritage's prior written consent.

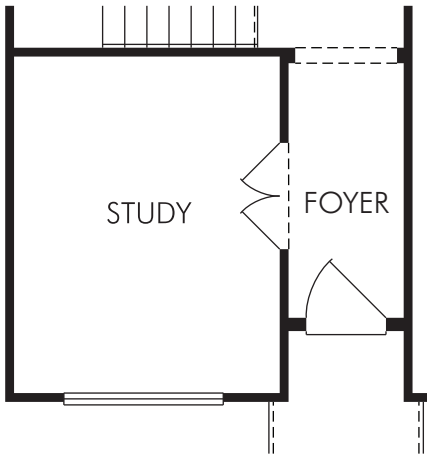
REV. 05/14
3226 AUS-SAN/Brick





SECOND FLOOR PLAN

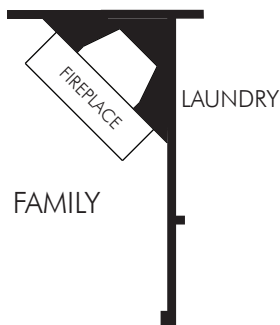
Venice



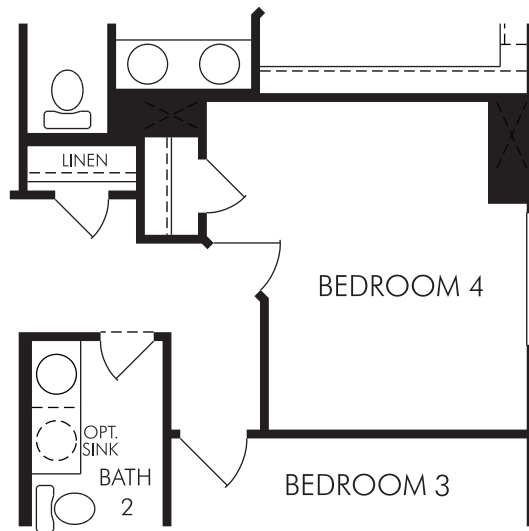
OPT. STUDY



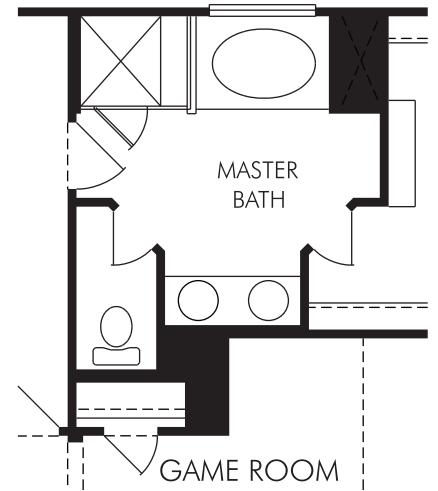
OPT. MASTER BATH WITH SHOWER



OPT. FIREPLACE



OPT. BEDROOM 4




OPT. MASTER BATH

OPTIONS FOR THE VENICE • FIRST & SECOND FLOOR



877-Ask-Meritage (275.6374) | meritagehomes.com

REV. 05/14
3226 AUS-SAN/Brick

 Floorplan rendering is an artist's conceptual rendering intended to provide a general overview. It does not constitute actual plans and specifications for any home and may depict elevations, options, upgrades, features, and amenities that are not included as part of the home and/or may not be available for all lots and/or in all communities. The floorplan rendering may not be drawn to scale. Any dimensions on the floorplan rendering are approximate and actual dimensions may vary. Plans and specifications are subject to change without notice. Homes may be constructed with a floorplan that is the reverse of the floorplan rendering. Plans are copyrighted and/or otherwise subject to intellectual property rights of Meritage and/or others and cannot be reproduced or copied without Meritage's prior written consent.