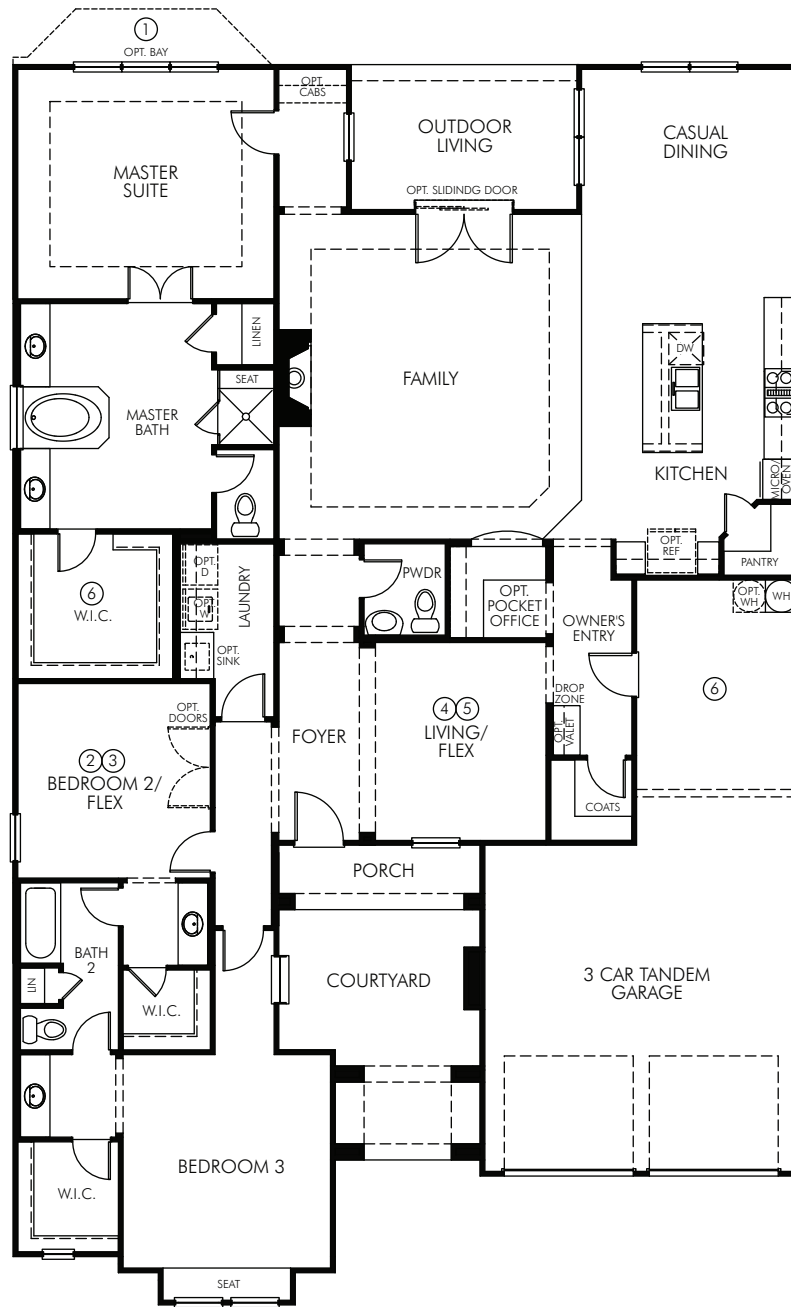


Wisteria



The Wisteria 525T

2,681 sq. ft. | 3 Bed | 2.5 Bath | 3 Garage | 1 Story

FLEX LIVING OPTIONS: Adding up to 187 sq ft. Master Suite Bay. Master Retreat. Den. Den 2. Bedroom 4. Super Laundry And Opt Master Suite Extended Closet.

MeritageHomes® 877-Ask-Meritage (275.6374) | meritagehomes.com

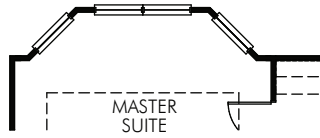


All promotional, marketing, and advertising estimates and claims related to energy savings or performance are created exclusively by third party suppliers, rating services, utility companies, and/or certified auditors, based on U.S. Department of Energy methodology and average energy use and scores. Actual energy savings and performance of any home or any of its features may vary widely, and may be more or less than indicated savings and performance, depending on the personal energy consumption choices of the occupants and changes in energy provider rates and programs. Square footages and dimensions are approximate and may vary in construction and depending on the standard of measurement used, engineering and municipal requirements, or other site-specific conditions. All renderings and floor plans are an artist's conceptual drawings and may vary from the actual plans and homes as built. Pictures and other promotional materials are representative and may depict or contain floor plans, square footages (All base square footages are shown as "A" elevation with masonry and may be greater or less than the base square footage based on the elevation), elevations, options, upgrades, extra design features, decorations, floor coverings, specialty light fixtures, custom paint and wall coverings, window treatments (such as shutters, drapes, etc.), landscaping, pool, spa, sound and alarm systems, furnishings, appliances, and other designer/decorator features and amenities that are not included as part of the home and/or may not be available in all communities. Meritage Homes® is a registered trademark of Meritage Homes Corporation. (C) 2016 Meritage Homes Corporation. All rights reserved.

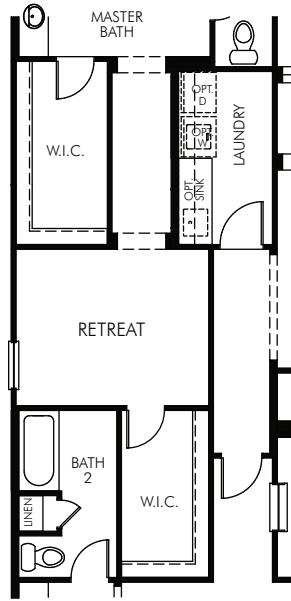
Rev 11/16
HOU 525T



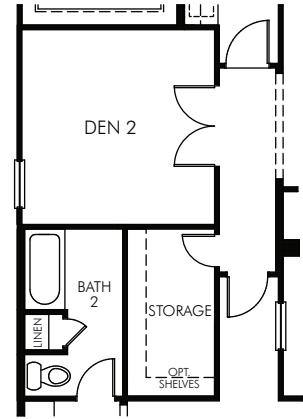
Wisteria



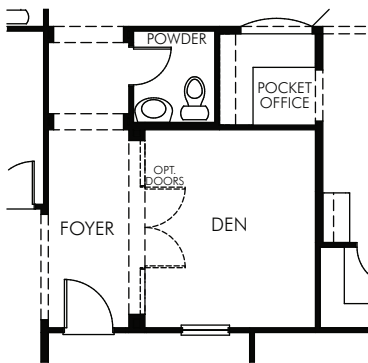
① OPT. MASTER SUITE BAY
-adding 42 sq ft
(BAY0005)



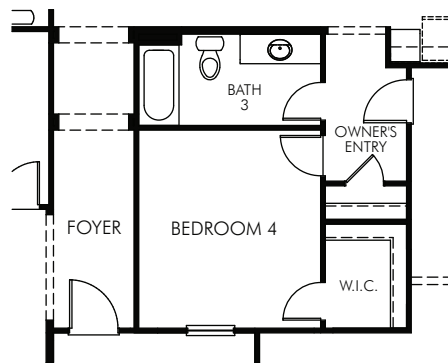
② OPT. MASTER RETREAT
(RMO0041)



③ OPT. DEN 2
(RMO0018)



④ OPT. DEN
(RMO0010)



⑤ OPT. BEDROOM 4
(BED0400)

First Floor

The Wisteria 525T Options

2,681 sq. ft. | 3 Bed | 2.5 Bath | 3 Garage | 1 Story



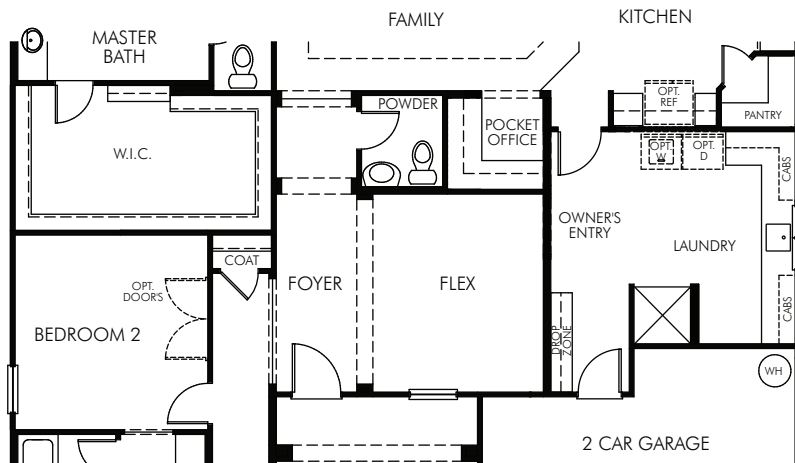
877-Ask-Meritage (275.6374) | meritagehomes.com



All promotional, marketing, and advertising estimates and claims related to energy savings or performance are created exclusively by third party suppliers, rating services, utility companies, and/or certified auditors, based on U.S. Department of Energy methodology and average energy use and scores. Actual energy savings and performance of any home or any of its features may vary widely, and may be more or less than indicated savings and performance, depending on the personal energy consumption choices of the occupants and changes in energy provider rates and programs. Square footages and dimensions are approximate and may vary in construction and depending on the standard of measurement used, engineering and municipal requirements, or other site-specific conditions. All renderings and floor plans are an artist's conceptual drawings and may vary from the actual plans and homes as built. Pictures and other promotional materials are representative and may depict or contain floor plans, square footages (All base square footages are shown as "A" elevation with masonry and may be greater or less than the base square footage based on the elevation), elevations, options, upgrades, extra design features, decorations, floor coverings, specialty light fixtures, custom paint and wall coverings, window treatments (such as shutters, drapes, etc.), landscaping, pool, spa, sound and alarm systems, furnishings, appliances, and other designer/decorator features and amenities that are not included as part of the home and/or may not be available in all communities. Meritage Homes® is a registered trademark of Meritage Homes Corporation. (C) 2016 Meritage Homes Corporation. All rights reserved.



Wisteria



⑥ OPT. SUPER LAUNDRY & EXTENDED MASTERS SUITE W.I.C
-adding 145 sq ft
(LAU1050)

The Wisteria 525T Options
2,681 sq. ft. | 3 Bed | 2.5 Bath | 3 Garage | 1 Story

First Floor

MeritageHomes® 877-Ask-Meritage (275.6374) | meritagehomes.com

All promotional, marketing, and advertising estimates and claims related to energy savings or performance are created exclusively by third party suppliers, rating services, utility companies, and/or certified auditors, based on U.S. Department of Energy methodology and average energy use and scores. Actual energy savings and performance of any home or any of its features may vary widely, and may be more or less than indicated savings and performance, depending on the personal energy consumption choices of the occupants and changes in energy provider rates and programs. Square footages and dimensions are approximate and may vary in construction and depending on the standard of measurement used, engineering and municipal requirements, or other site-specific conditions. All renderings and floor plans are an artist's conceptual drawings and may vary from the actual plans and homes as built. Pictures and other promotional materials are representative and may depict or contain floor plans, square footages (All base square footages are shown as "A" elevation with masonry and may be greater or less than the base square footage based on the elevation), elevations, options, upgrades, extra design features, decorations, floor coverings, specialty light fixtures, custom paint and wall coverings, window treatments (such as shutters, drapes, etc.), landscaping, pool, spa, sound and alarm systems, furnishings, appliances, and other designer/decorator features and amenities that are not included as part of the home and/or may not be available in all communities. Meritage Homes® is a registered trademark of Meritage Homes Corporation. (C) 2016 Meritage Homes Corporation. All rights reserved.

