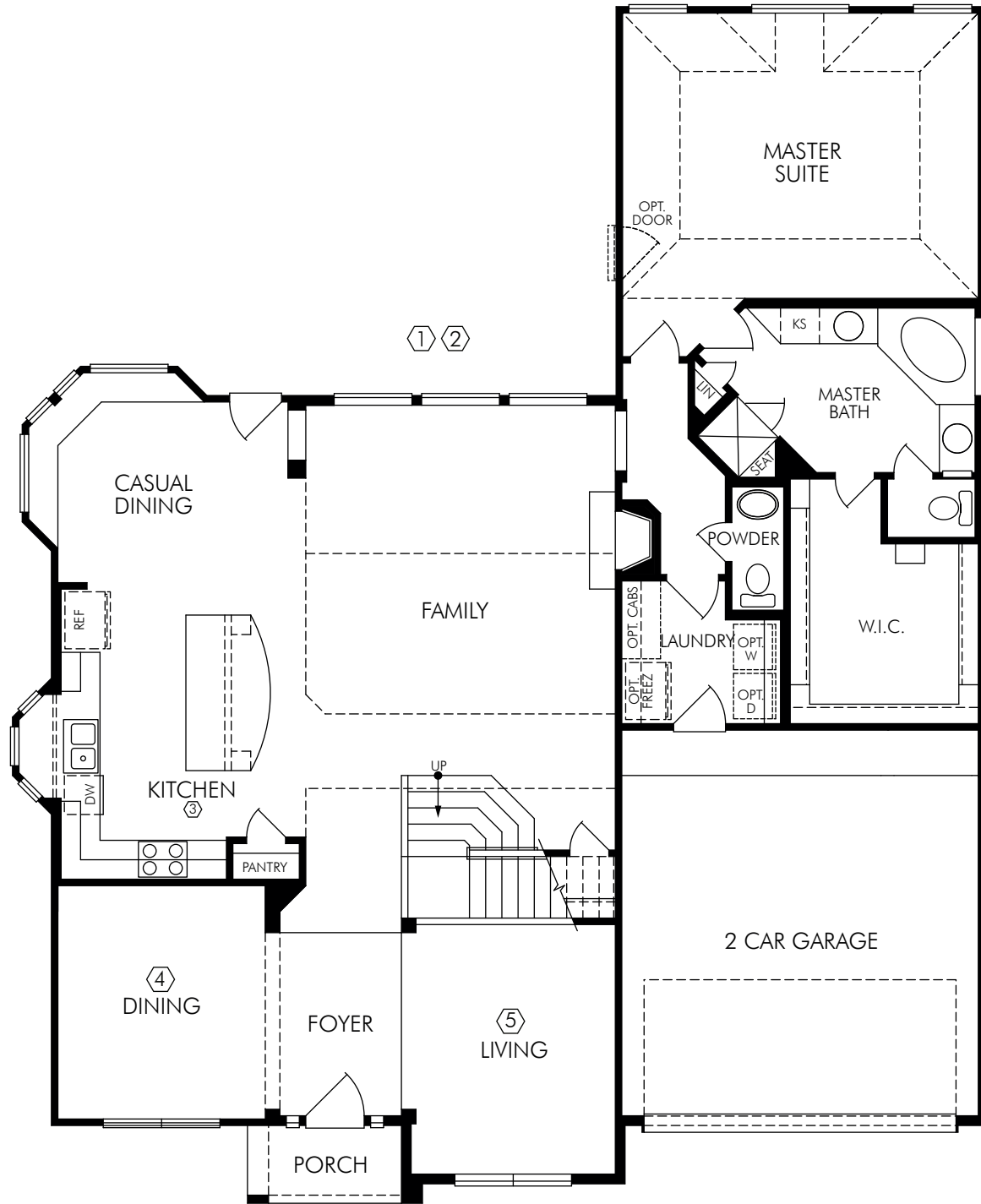


# Aspen X



## THE ASPEN X • PLAN 7090

3,233 sq ft. • Two Story • 4 Bedroom • 2.5 Bath • Dining • Family Room • Living • Game Room • Media Room  
• 2 Car Garage

**MeritageHomes**® 877-Ask-Meritage (275.6374) | [meritagehomes.com](http://meritagehomes.com)

Floorplan rendering is an artist's conceptual rendering intended to provide a general overview. It does not constitute actual plans and specifications for any home and may depict elevations, options, upgrades, features, and amenities that are not included as part of the home and/or may not be available for all lots and/or in all communities. The floorplan rendering may not be drawn to scale. Any dimensions on the floorplan rendering are approximate and actual dimensions may vary. Plans and specifications are subject to change without notice. Homes may be constructed with a floorplan that is the reverse of the floorplan rendering. Plans are copyrighted and/or otherwise subject to intellectual property rights of Meritage and/or others and cannot be reproduced or copied without Meritage's prior written consent.

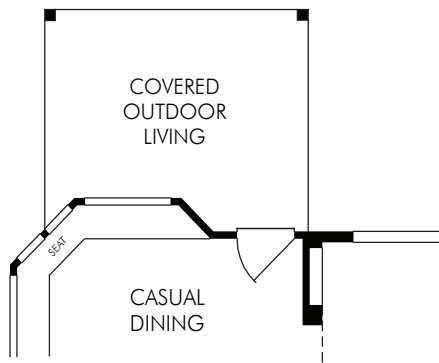
REV. 07/15  
HOU/7090



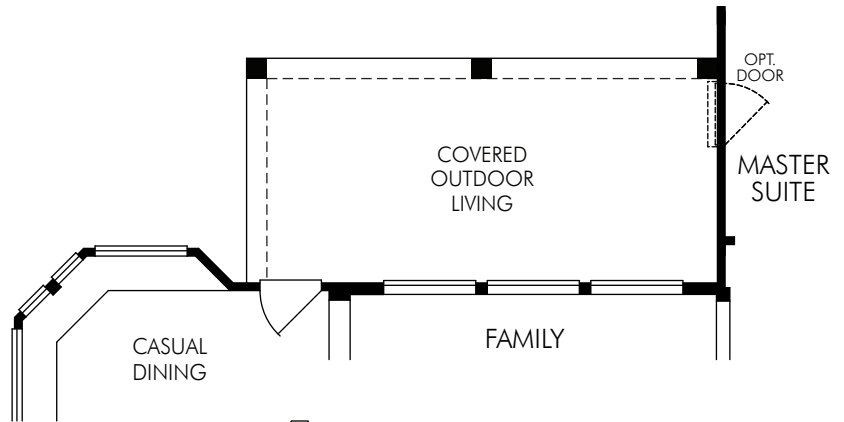


SECOND FLOOR

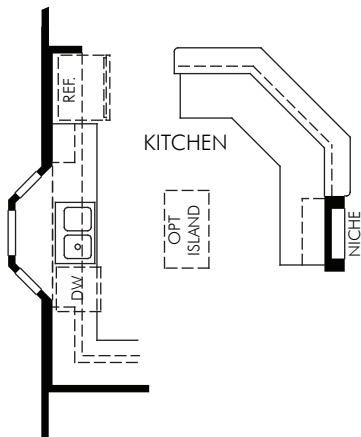
# Aspen X



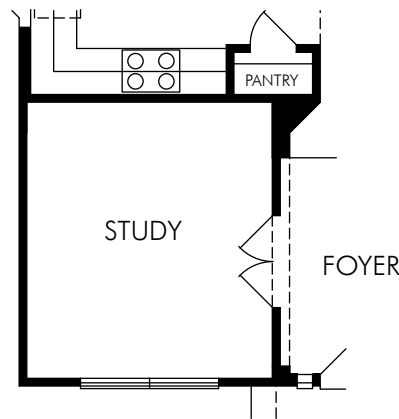
① COVERED OUTDOOR LIVING



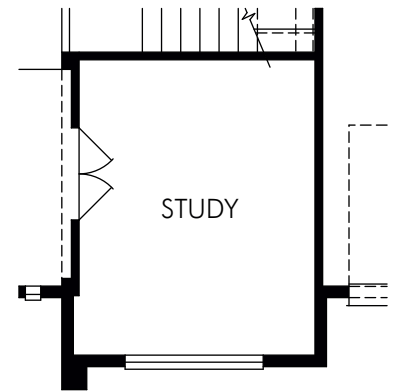
② COVERED OUTDOOR LIVING



③ OPT. KITCHEN 2



④ OPT. STUDY ILO DINING



⑤ OPT. STUDY ILO LIVING

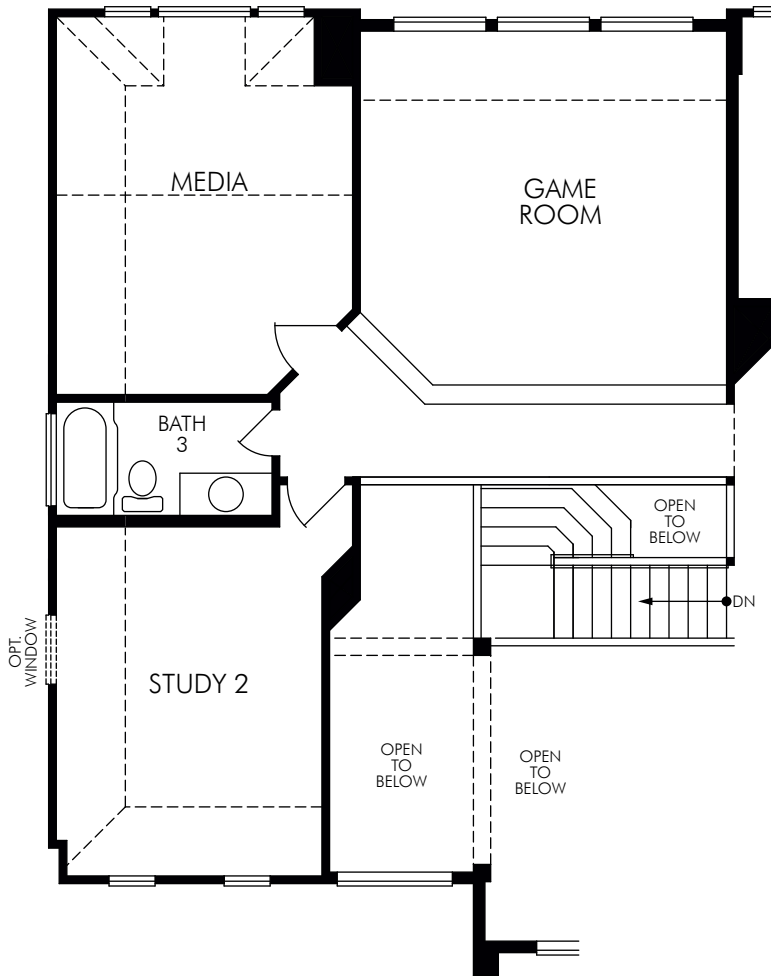
## OPTIONS FOR THE ASPEN X • FIRST FLOOR

**MeritageHomes**® 877-Ask-Meritage (275.6374) | [meritagehomes.com](http://meritagehomes.com)

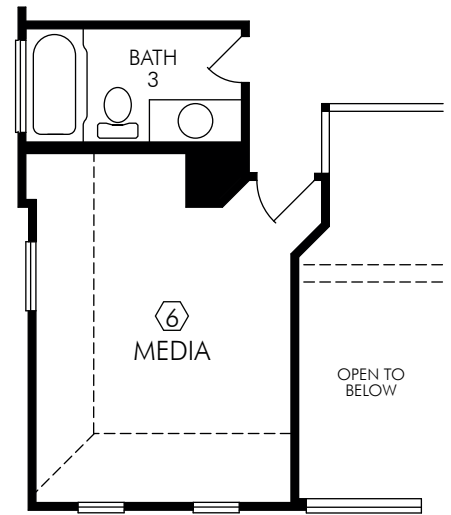
Floorplan rendering is an artist's conceptual rendering intended to provide a general overview. It does not constitute actual plans and specifications for any home and may depict elevations, options, upgrades, features, and amenities that are not included as part of the home and/or may not be available for all lots and/or in all communities. The floorplan rendering may not be drawn to scale. Any dimensions on the floorplan rendering are approximate and actual dimensions may vary. Plans and specifications are subject to change without notice. Homes may be constructed with a floorplan that is the reverse of the floorplan rendering. Plans are copyrighted and/or otherwise subject to intellectual property rights of Meritage and/or others and cannot be reproduced or copied without Meritage's prior written consent.



# Aspen X



⑥ OPT. GAMEROOM/ MEDIA/ STUDY 2



⑦ OPT. BATH 3

## OPTIONS FOR THE ASPEN X • SECOND FLOOR

**MeritageHomes®** 877-Ask-Meritage (275.6374) | [meritagehomes.com](http://meritagehomes.com)

Floorplan rendering is an artist's conceptual rendering intended to provide a general overview. It does not constitute actual plans and specifications for any home and may depict elevations, options, upgrades, features, and amenities that are not included as part of the home and/or may not be available for all lots and/or in all communities. The floorplan rendering may not be drawn to scale. Any dimensions on the floorplan rendering are approximate and actual dimensions may vary. Plans and specifications are subject to change without notice. Homes may be constructed with a floorplan that is the reverse of the floorplan rendering. Plans are copyrighted and/or otherwise subject to intellectual property rights of Meritage and/or others and cannot be reproduced or copied without Meritage's prior written consent.

