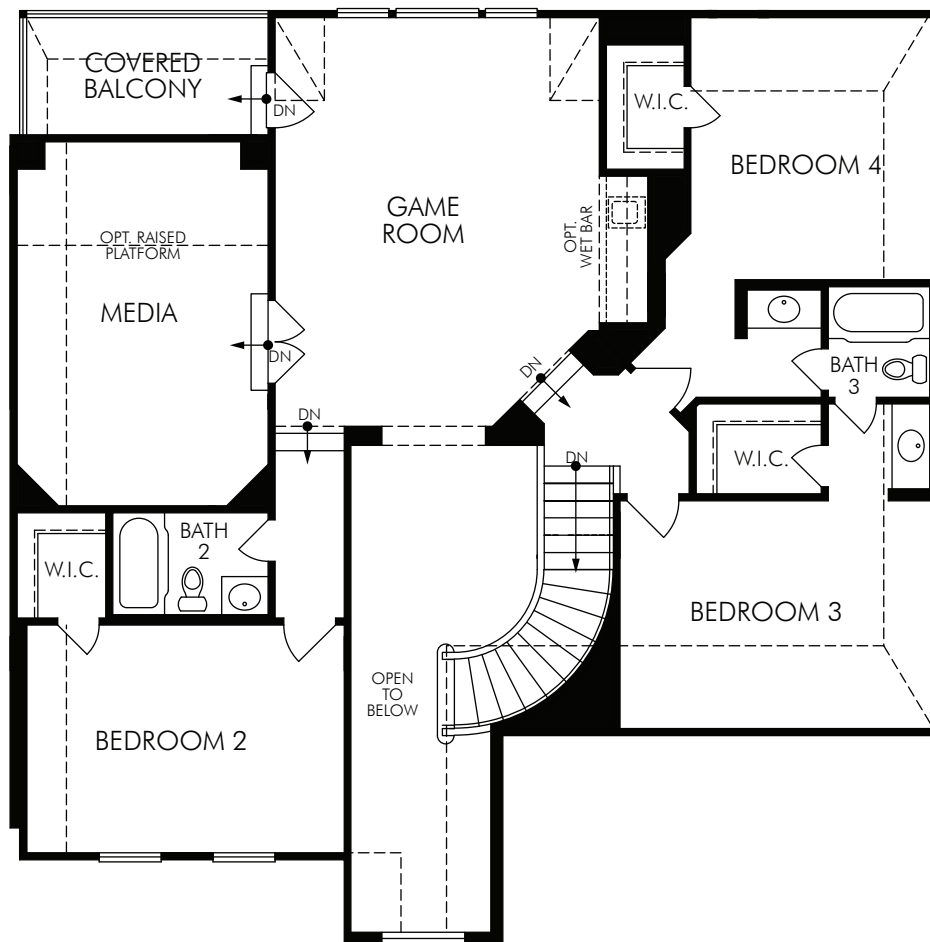




# Mont Blanc



## Community Name

The Mont Blanc 5553 Second Floor

3,395 sq. ft. | 4 Bed | 3.5 Bath | 2 Car Garage | 2 Story

FLEX LIVING OPTI ONS :



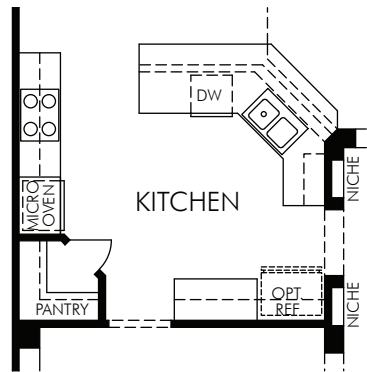
877-Ask-Meritage (275.6374) | [meritagehomes.com](https://www.meritagehomes.com)



Floorplan rendering is an artist's conceptual rendering intended to provide a general overview. It does not constitute a contract or any other legal document. It is not intended to be used as a basis for any legal action. Any dimensions on the floorplan rendering are approximate and actual dimensions may vary. Plans and specifications are subject to change without notice. Homes may be constructed with a floorplan that is the reverse of the floorplan as depicted and/or otherwise subject to intellectual property rights of Meritage and/or others and cannot be reproduced or copied without Meritage's prior written consent.



# Mont Blanc



① OPT. BUILT-IN KITCHEN

Community Name

First Floor

The Mont Blanc 5553 Options

3,395 sq. ft. | 4 Bed | 3.5 Bath | 2 Car Garage | 2 Story



877-Ask-Meritage (275.6374) | [meritagehomes.com](http://meritagehomes.com)

Floorplan rendering is an artist's conceptual rendering intended to provide a general overview. It does not constitute a contract or any other legal document. It is not intended to be used as a basis for any construction or other legal action. Any dimensions on the floorplan rendering are approximate and actual dimensions may vary. Plans and specifications are subject to change without notice. Homes may be constructed with a floorplan that is the reverse of the floorplan shown. All rights reserved. © 2018 Meritage Homes Corporation. All other trademarks are the property of their respective owners.

