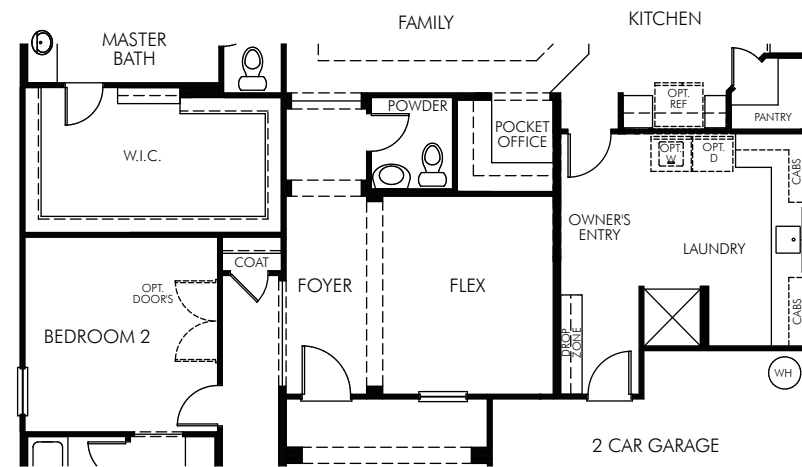


Community Name

The Wisteria 525T

2,681 sq. ft. | 3 Bed | 2.5 Bath | 3 Garage | 1 Story

Street Address
City, State, Zip



⑥ OPT. SUPER LAUNDRY & EXTENDED MASTER'S SUITE W.I.C.
-adding 145 sq ft
(LAU1050)

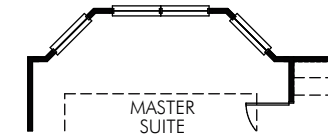
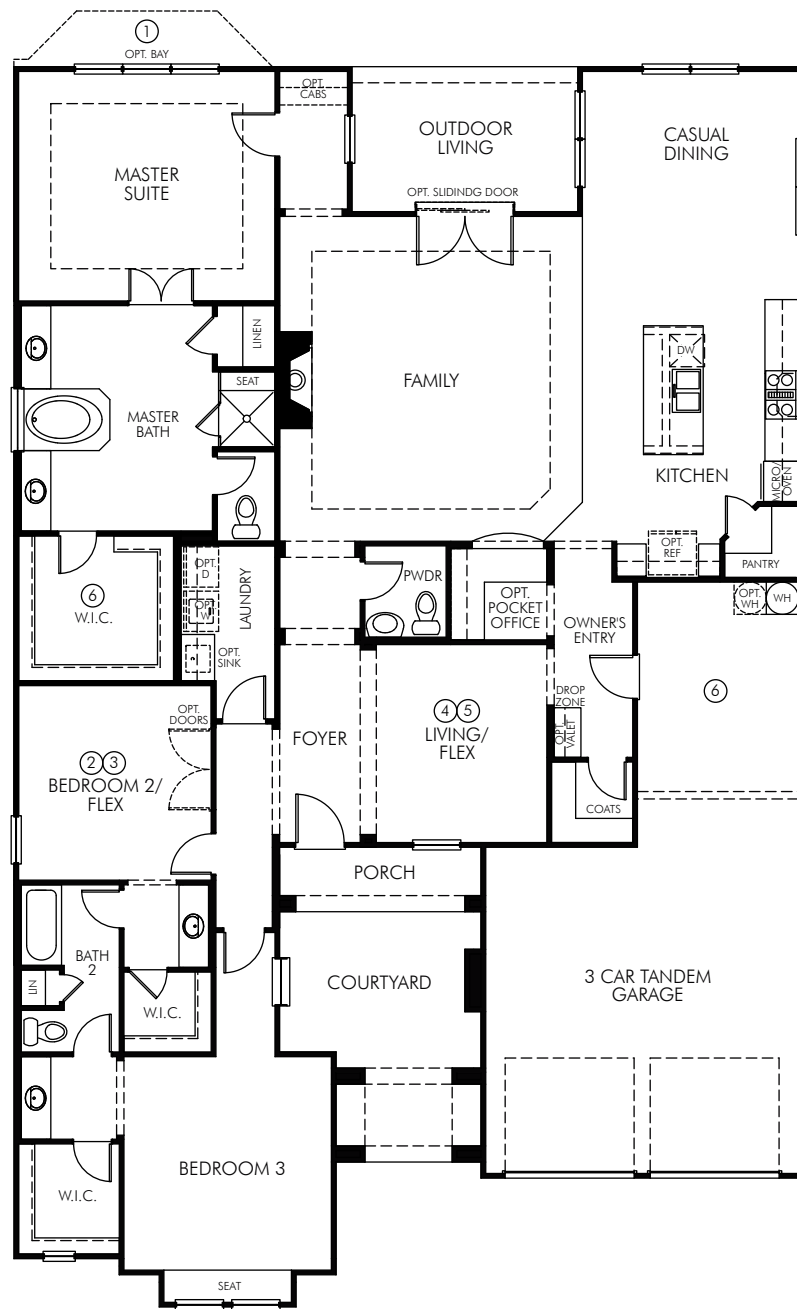
Community Name

First Floor

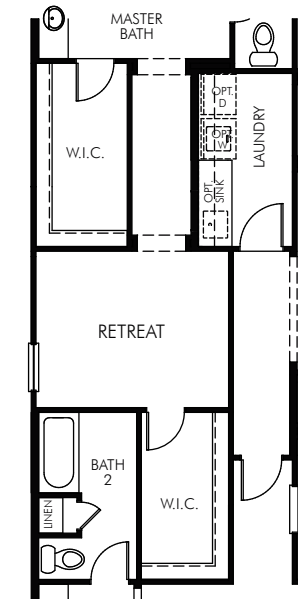
The Wisteria 525T Options

2,681 sq. ft. | 3 Bed | 2.5 Bath | 3 Garage | 1 Story

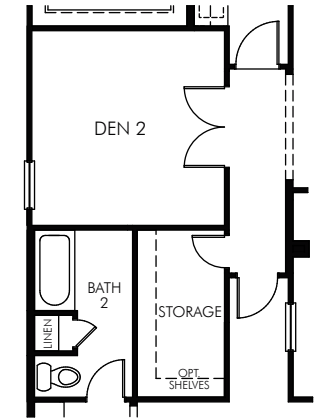
Pictures and other promotional materials are representative and may depict or contain options, upgrades, landscaping, and extra design features that are not included as part of the home and/or may not be available in all communities. Floor plans, elevations, options, home features, and community information are subject to change at any time without notice or obligation. Square footages and dimensions are approximate and may vary in construction and depending on the standard of measurement used, engineering and municipal requirements, or other site-specific conditions. All renderings and floor plans are an artist's conceptual drawings and may vary from the actual plans and homes as built, including, without limitation, window, door and other improvement locations and changes required by governmental authority or to accommodate options or value engineering. Further, renderings may not be drawn to scale and homes may be constructed with a floor plan that is the reverse of the rendering. Plans are copyrighted and/or otherwise subject to intellectual property rights of Meritage Homes and cannot be reproduced or copied without its prior written consent. Not an offer or solicitation to sell real property. Offers to sell real property may only be made and accepted at the sales center for individual Meritage Homes communities. See sales associate for details. Meritage Homes® is a registered trademark of Meritage Homes Corporation. ©2014 Meritage Homes Corporation. All rights reserved.



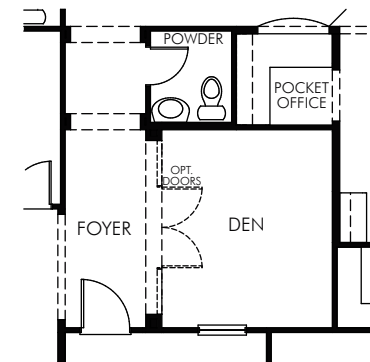
① OPT. MASTER SUITE BAY
-adding 42 sq ft
(BAY0005)



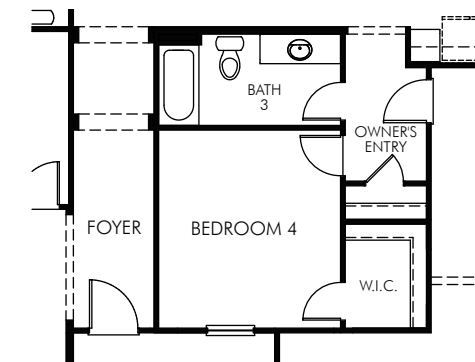
② OPT. MASTER RETREAT
(RMO0041)



③ OPT. DEN 2
(RMO0018)



④ OPT. DEN
(RMO0010)



⑤ OPT. BEDROOM 4
(BED0400)

Community Name

The Wisteria 525T

2,681 sq. ft. | 3 Bed | 2.5 Bath | 3 Garage | 1 Story

FLEX LIVING OPTIONS: Adding up to 187 sq ft. Master Suite Bay. Master Retreat. Den. Den 2. Bedroom 4. Super Laundry And Opt Master Suite Extended Closet.

Community Name

The Wisteria 525T Options

2,681 sq. ft. | 3 Bed | 2.5 Bath | 3 Garage | 1 Story

First Floor

Pictures and other promotional materials are representative and may depict or contain options, upgrades, landscaping, and extra design features that are not included as part of the home and/or may not be available in all communities. Floor plans, elevations, options, home features, and community information are subject to change at any time without notice or obligation. Square footages and dimensions are approximate and may vary in construction and depending on the standard of measurement used, engineering and municipal requirements, or other site-specific conditions. All renderings and floor plans are an artist's conceptual drawings and may vary from the actual plans and homes as built, including, without limitation, window, door and other improvement locations and changes required by governmental authority or to accommodate options or value engineering. Further, renderings may not be drawn to scale and homes may be constructed with a floor plan that is the reverse of the rendering. Plans are copyrighted and/or otherwise subject to intellectual property rights of Meritage Homes and cannot be reproduced or copied without its prior written consent. Not an offer or solicitation to sell real property. Offers to sell real property may only be made and accepted at the sales center for individual Meritage Homes communities. See sales associate for details. Meritage Homes® is a registered trademark of Meritage Homes Corporation. ©2014 Meritage Homes Corporation. All rights reserved.