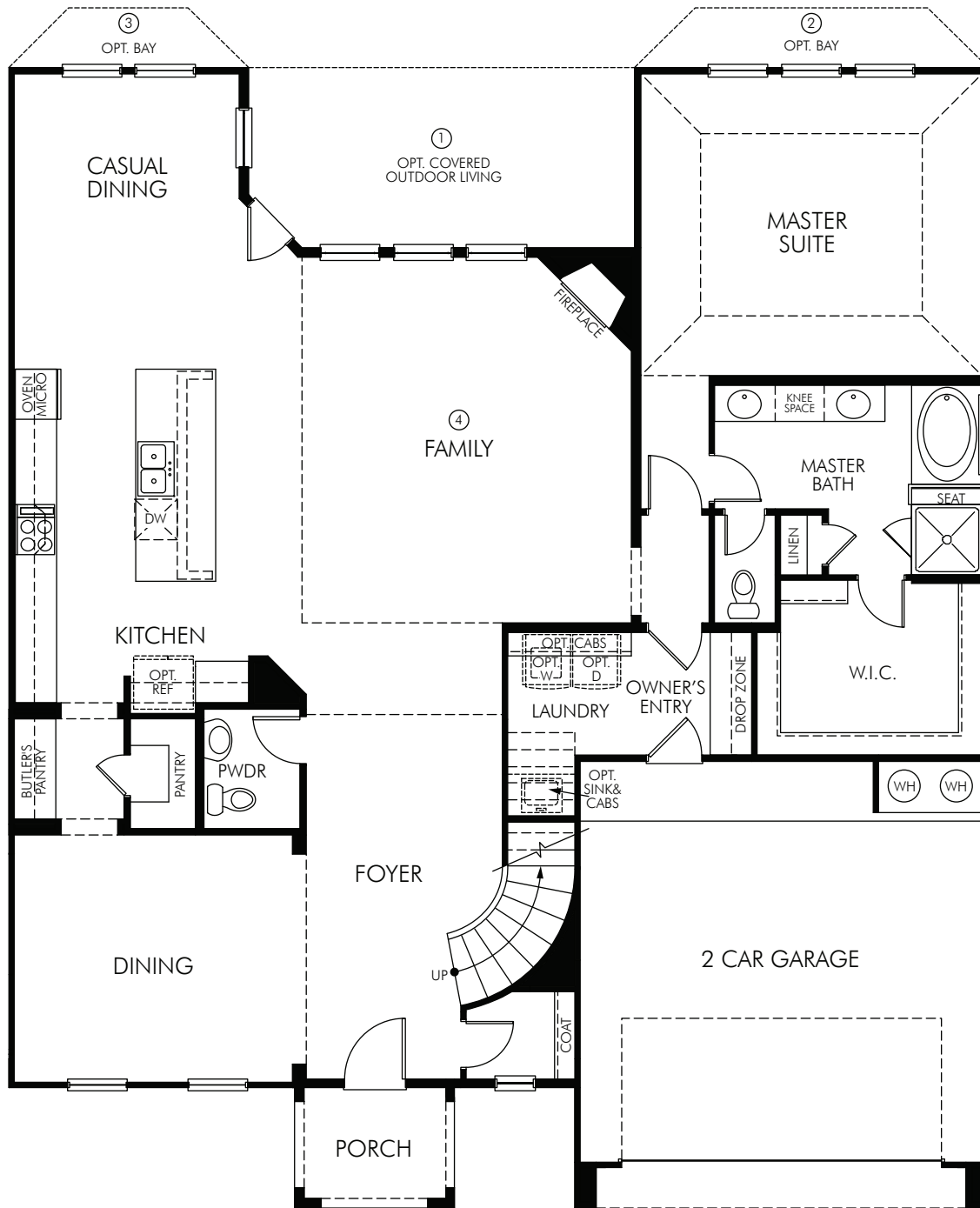


# Versailles



## The Versailles 5010 First Floor

3,275 sq. ft. | 4 Bed | 3.5 Bath | 2 Car Garage | 2 Story

**FLEX LIVING OPTIONS:** Bay At Master. Bay at Casual Dining. Sliding Glass Door. Covered Outdoor Living.



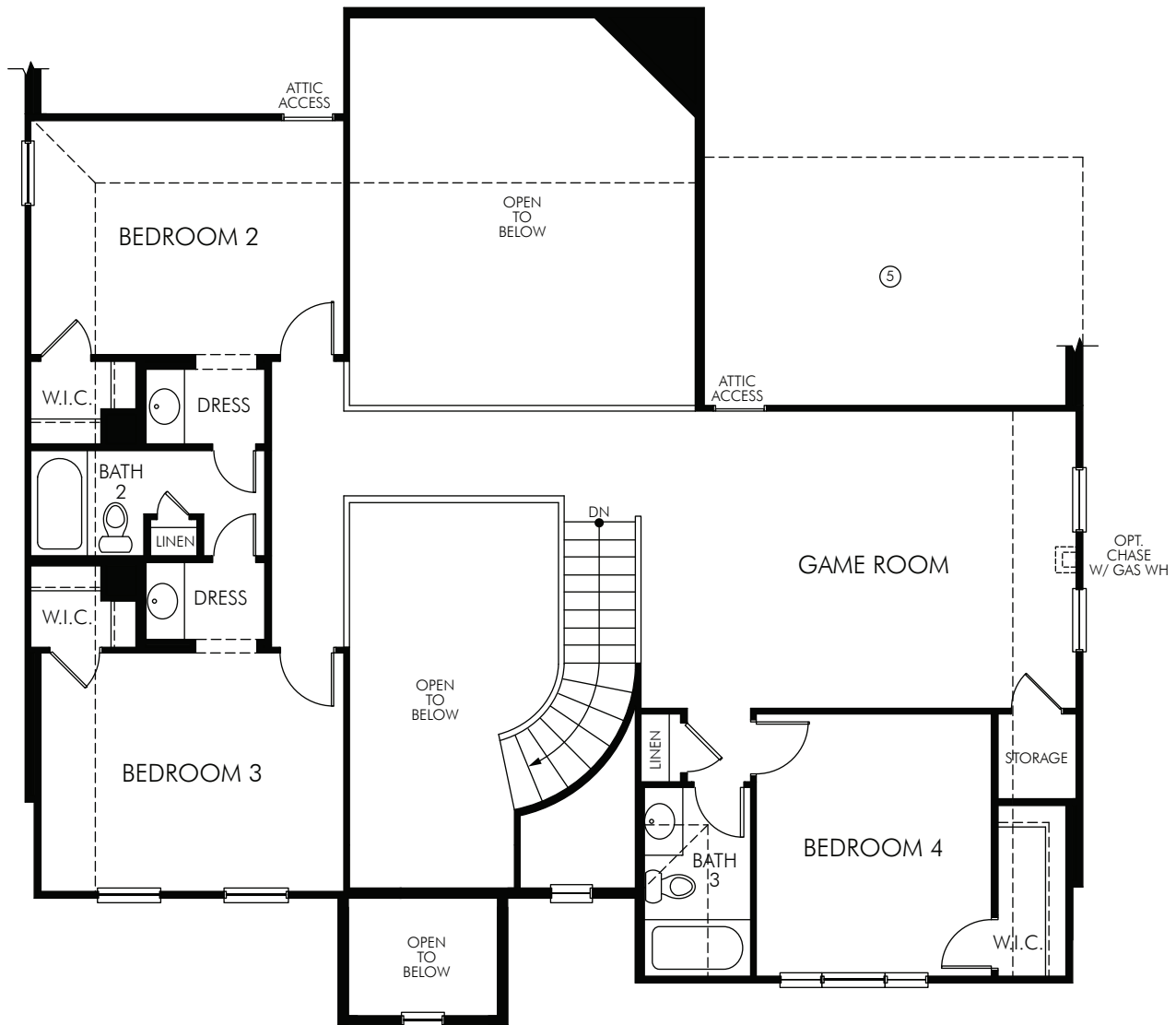
877-Ask-Meritage (275.6374) | [meritagehomes.com](http://meritagehomes.com)

Floorplan rendering is an artist's conceptual rendering intended to provide a general overview. It does not constitute actual plans and specifications for any home and may depict elevations, options, upgrades, features, and amenities that are not included as part of the home and/or may not be available for all lots and/or in all communities. The floorplan rendering may not be drawn to scale. Any dimensions on the floorplan rendering are approximate and actual dimensions may vary. Plans and specifications are subject to change without notice. Homes may be constructed with a floorplan that is the reverse of the floorplan rendering. Plans are copyrighted and/or otherwise subject to intellectual property rights of Meritage and/or others and cannot be reproduced or copied without Meritage's prior written consent.

15-002  
REG 5010 Base + Built-in



# Versailles



## The Versailles 5010 Second Floor

3,275 sq. ft. | 4 Bed | 3.5 Bath | 2 Car Garage | 2 Story

**FLEX LIVING OPTIONS:** Media.

**MeritageHomes**® 877-Ask-Meritage (275.6374) | [meritagehomes.com](http://meritagehomes.com)

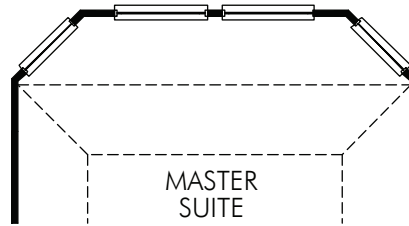
Floorplan rendering is an artist's conceptual rendering intended to provide a general overview. It does not constitute actual plans and specifications for any home and may depict elevations, options, upgrades, features, and amenities that are not included as part of the home and/or may not be available for all lots and/or in all communities. The floorplan rendering may not be drawn to scale. Any dimensions on the floorplan rendering are approximate and actual dimensions may vary. Plans and specifications are subject to change without notice. Homes may be constructed with a floorplan that is the reverse of the floorplan rendering. Plans are copyrighted and/or otherwise subject to intellectual property rights of Meritage and/or others and cannot be reproduced or copied without Meritage's prior written consent.



# Versailles



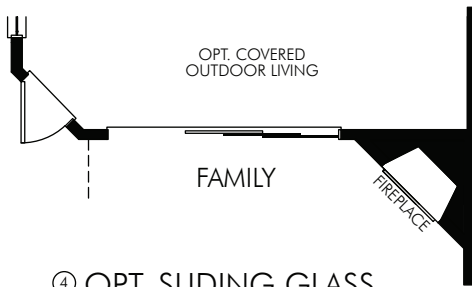
① OPT. COVERED  
OUTDOOR LIVING  
OUT01909



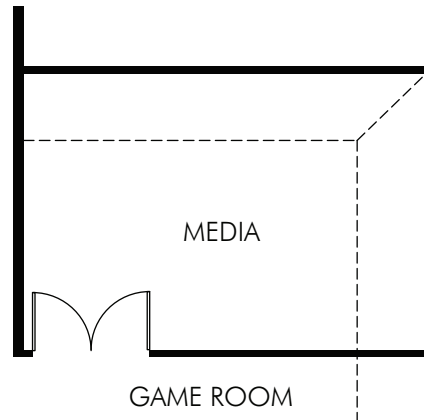
② OPT. BAY AT MASTER  
-adding 54 sq. ft.  
BAY0005



③ OPT. CASUAL  
DINING BAY  
-adding 34 sq. ft.  
BAY0008



④ OPT. SLIDING GLASS  
DOOR AT FAMILY  
DOOR10



⑤ OPT. MEDIA  
-adding 226 sq. ft.  
RM00012

## First and Second Floor

### The Versailles 5010 Options

3,275 sq. ft. | 4 Bed | 3.5 Bath | 2 Car Garage | 2 Story

**MeritageHomes**® 877-Ask-Meritage (275.6374) | [meritagehomes.com](http://meritagehomes.com)

Floorplan rendering is an artist's conceptual rendering intended to provide a general overview. It does not constitute actual plans and specifications for any home and may depict elevations, options, upgrades, features, and amenities that are not included as part of the home and/or may not be available for all lots and/or in all communities. The floorplan rendering may not be drawn to scale. Any dimensions on the floorplan rendering are approximate and actual dimensions may vary. Plans and specifications are subject to change without notice. Homes may be constructed with a floorplan that is the reverse of the floorplan rendering. Plans are copyrighted and/or otherwise subject to intellectual property rights of Meritage and/or others and cannot be reproduced or copied without Meritage's prior written consent.

