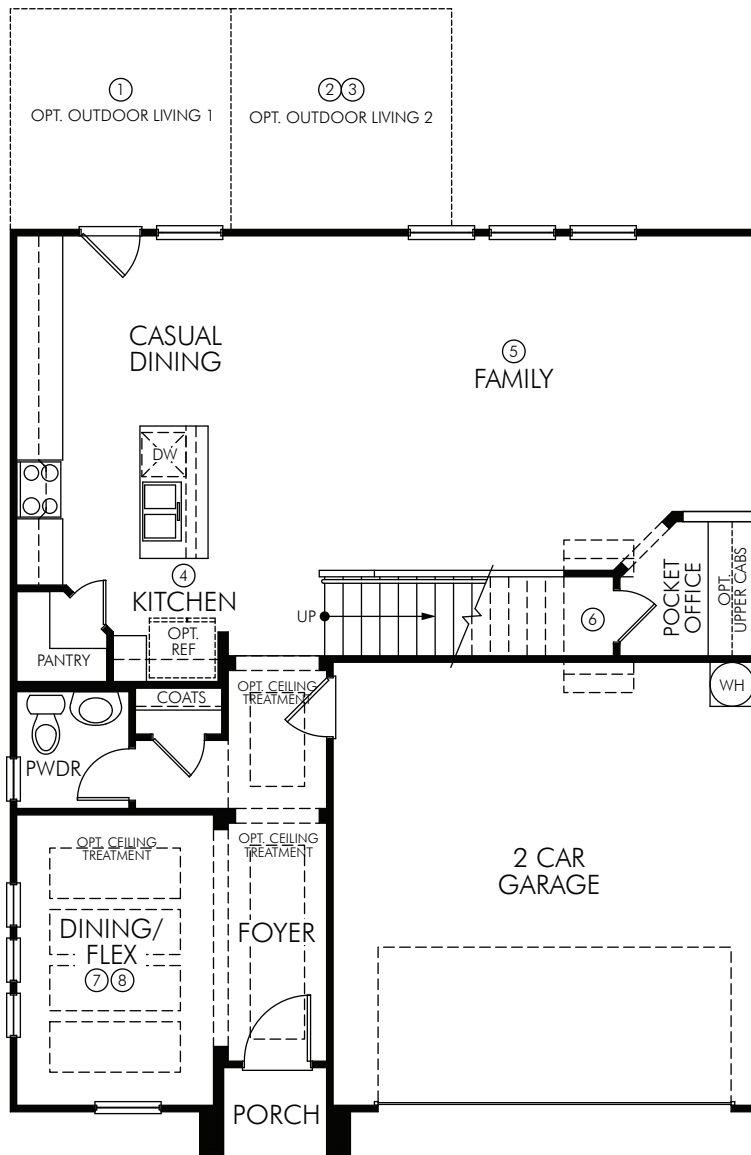


Red River



The Red River 3006 First Floor

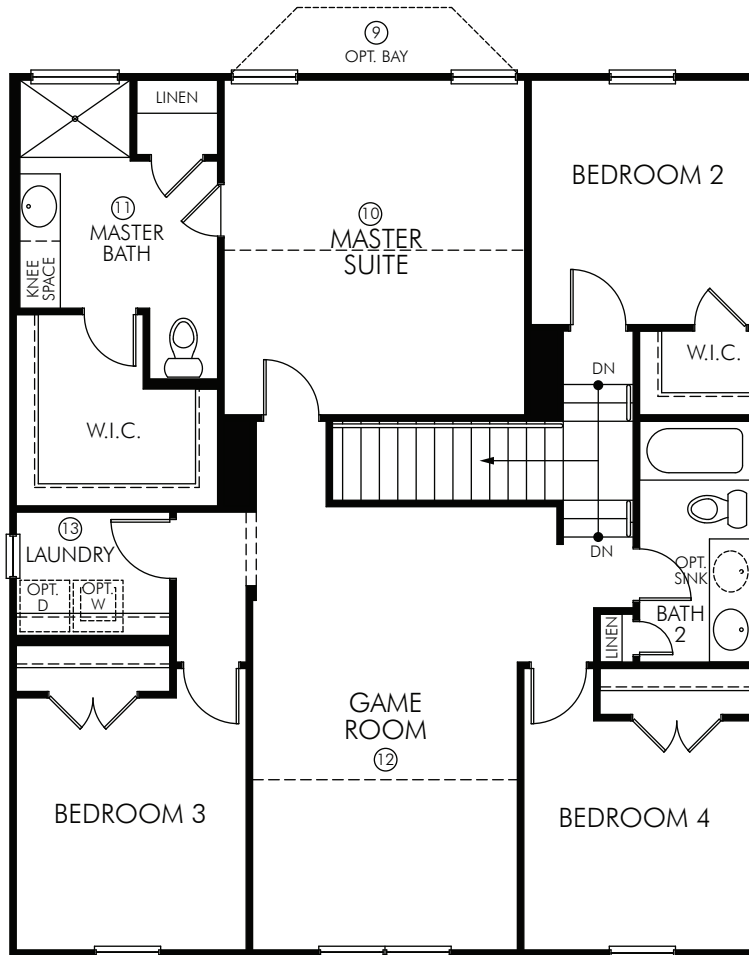
2,277 sq. ft. | 4 Bed | 2.5 Bath | 2 Garage | 2 Story

FLEX LIVING OPTIONS: Deluxe Kitchen. Bulk Storage. Study. Bedroom 6/ Bath 3. Outdoor Living.

MeritageHomes® 877-Ask-Meritage (275.6374) | meritagehomes.com

REV. 12/14
REG/3006

Floorplan rendering is an artist's conceptual rendering intended to provide a general overview. It does not constitute actual plans and specifications for any home and may depict elevations, options, upgrades, features, and amenities that are not included as part of the home and/or may not be available for all lots and/or in all communities. The floorplan rendering may not be drawn to scale. Any dimensions on the floorplan rendering are approximate and actual dimensions may vary. Plans and specifications are subject to change without notice. Homes may be constructed with a floorplan that is the reverse of the floorplan rendering. Plans are copyrighted and/or otherwise subject to intellectual property rights of Meritage and/or others and cannot be reproduced or copied without Meritage's prior written consent.



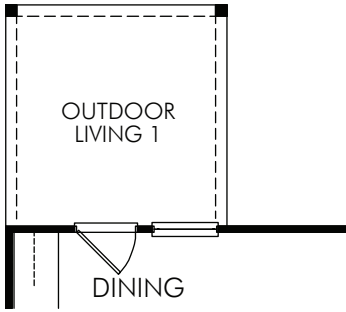
The Red River 3006 Second Floor

2,277 sq. ft. | 4 Bed | 2.5 Bath | 2 Garage | 2 Story

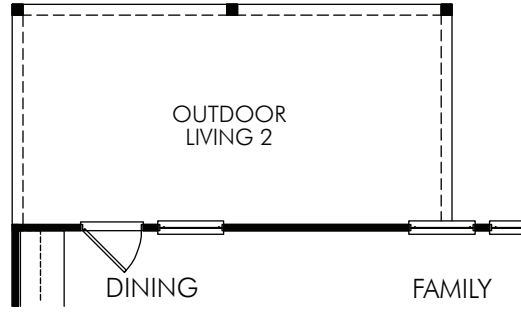
FLEX LIVING OPTIONS: Adding up to 38 sq. ft. Master Suite Bay. Deluxe Master Suite. Deluxe Master Bath. Bedroom 5. Bath 4.

MeritageHomes® 877-Ask-Meritage (275.6374) | meritagehomes.com

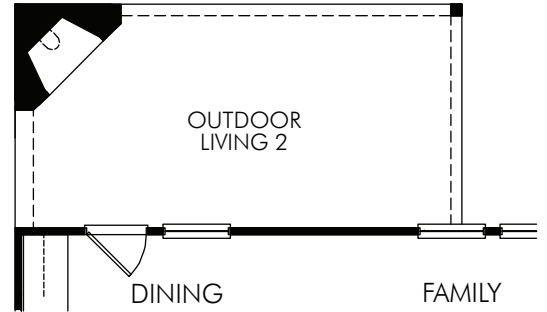
Red River



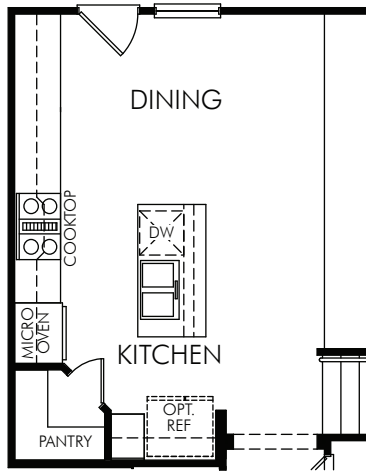
① OPT. OUTDOOR LIVING 1
(OUT1010)



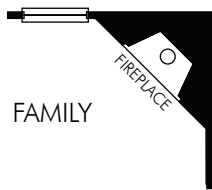
② OPT. OUTDOOR LIVING 2
(OUT1020)



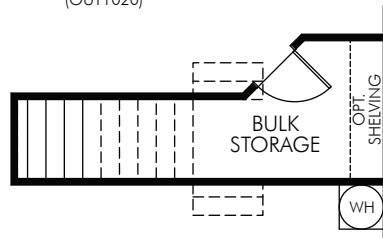
③ OPT. FIREPLACE w/ OUTDOOR LIVING 2
(FP0130)



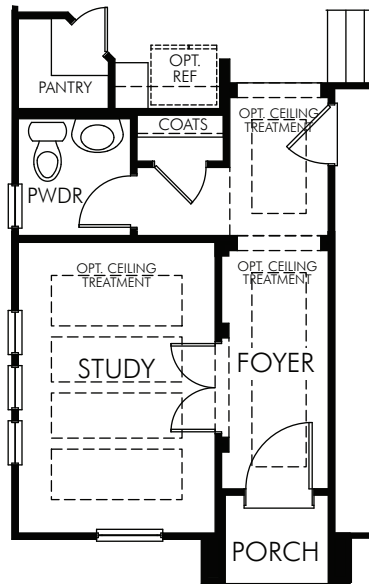
④ OPT. DELUXE KITCHEN
(KIT1000)



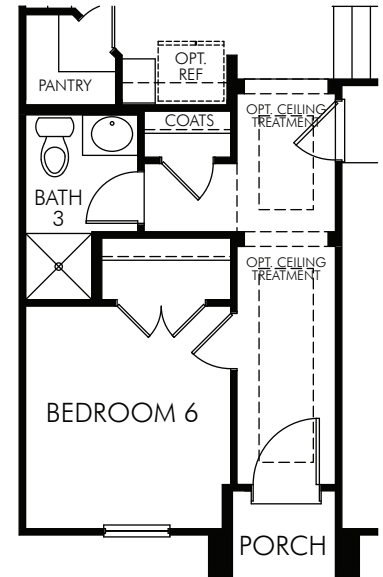
⑤ OPT. FIREPLACE
(KIT1000)



⑥ OPT. BULK STORAGE
(RMO0043)



⑦ OPT. STUDY
(RMO0015)



⑧ OPT. BEDROOM 6 / BATH 3
(BED0604 & BTH0130)

First Floor

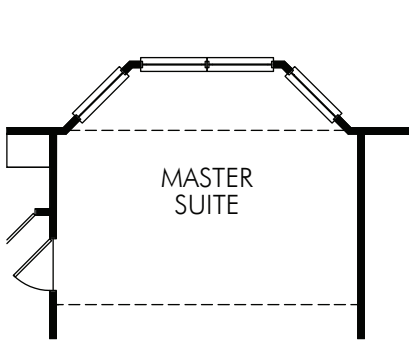
The Red River 3006 Options

2,277 sq. ft. | 4 Bed | 2.5 Bath | 2 Garage | 2 Story

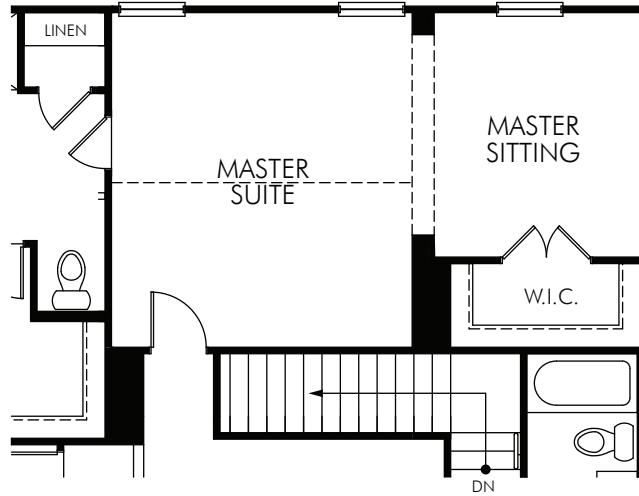
MeritageHomes® 877-Ask-Meritage (275.6374) | meritagehomes.com

Floorplan rendering is an artist's conceptual rendering intended to provide a general overview. It does not constitute actual plans and specifications for any home and may depict elevations, options, upgrades, features, and amenities that are not included as part of the home and/or may not be available for all lots and/or in all communities. The floorplan rendering may not be drawn to scale. Any dimensions on the floorplan rendering are approximate and actual dimensions may vary. Plans and specifications are subject to change without notice. Homes may be constructed with a floorplan that is the reverse of the floorplan rendering. Plans are copyrighted and/or otherwise subject to intellectual property rights of Meritage and/or others and cannot be reproduced or copied without Meritage's prior written consent.

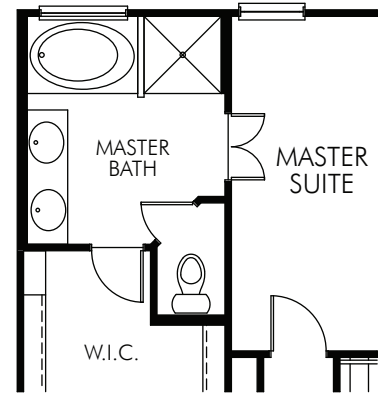




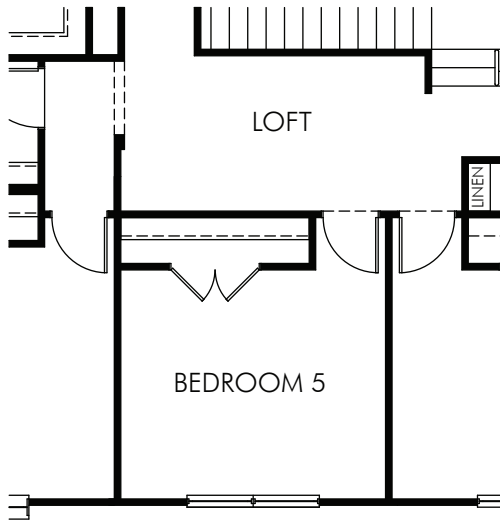
⑨ OPT. MASTER SUITE BAY
-adding 38 sq ft
(BAY0005)



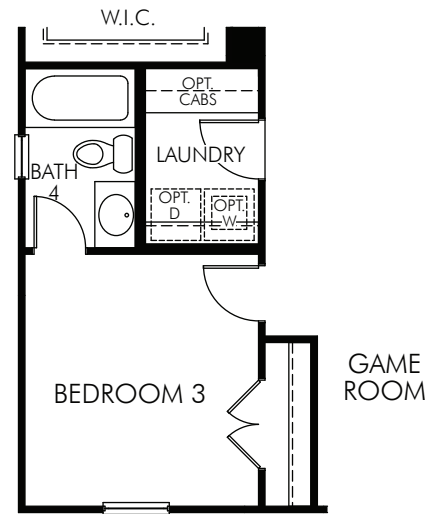
⑩ OPT. DELUXE MASTER SUITE
(BED0700)



⑪ OPT. DELUXE MASTER BATH
(BTH0105)



⑫ OPT. BEDROOM 5/
LOFT
(BED0500)



⑬ OPT. BATH 4
(BTH0140)

Second Floor

The Red River 3006 Options

2,277 sq. ft. | 4 Bed | 2.5 Bath | 2 Garage | 2 Story

MeritageHomes® 877-Ask-Meritage (275.6374) | meritagehomes.com

Floorplan rendering is an artist's conceptual rendering intended to provide a general overview. It does not constitute actual plans and specifications for any home and may depict elevations, options, upgrades, features, and amenities that are not included as part of the home and/or may not be available for all lots and/or in all communities. The floorplan rendering may not be drawn to scale. Any dimensions on the floorplan rendering are approximate and actual dimensions may vary. Plans and specifications are subject to change without notice. Homes may be constructed with a floorplan that is the reverse of the floorplan rendering. Plans are copyrighted and/or otherwise subject to intellectual property rights of Meritage and/or others and cannot be reproduced or copied without Meritage's prior written consent.

