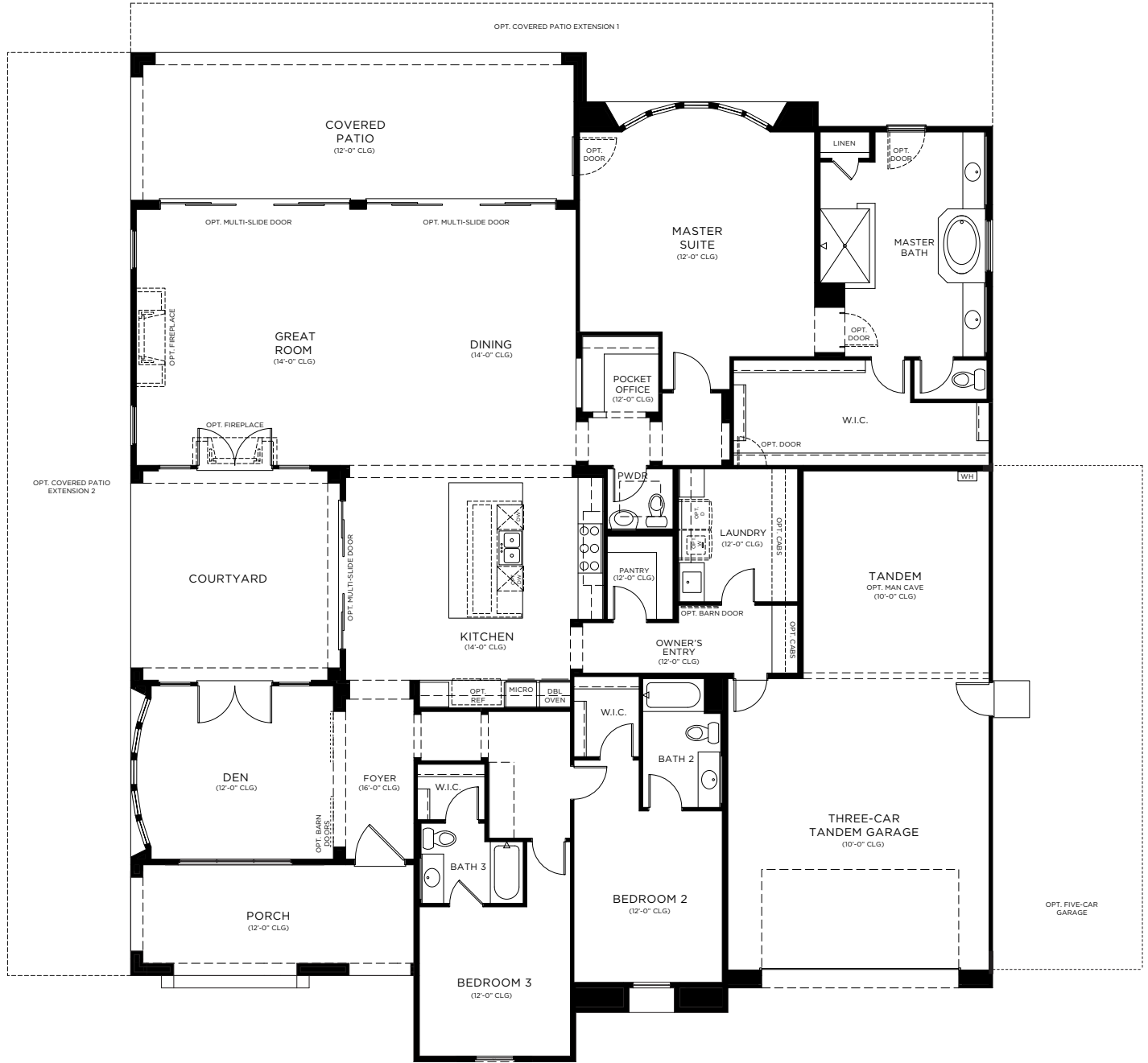


MONTEREY

Homes



Monterey at Verde River | Valencia

3,452 sq. ft. | 3 Bed | 3.5 Bath | 3 Car Tandem Garage | 1 Story

FLEX LIVING OPTIONS: Opt. Master Suite 2, Opt. Den, Opt. Wet Bar, Opt. Master Retreat, Opt. Super Laundry, Opt. 5 Car Garage, Opt. Covered Patio Extension 1 or 2, Opt. Man Cave w/Opt. Kitchen or Powder Bath

Any floorplan and/or elevation rendering is an artist's conceptual rendering intended to provide a general overview, but any such rendering does not constitute actual plans and specifications for any home. Renderings and pictures are representative and may depict floorplans, elevations, options, upgrades, landscaping, and other features and amenities that are not included as part of all homes and/or may not be available for all lots and/or in all communities. Renderings may not be drawn to scale. Any provided dimensions are approximate and actual dimensions may vary. Homes may be constructed with a floorplan that is the reverse of the floorplan rendering. Plans are copyrighted and/or otherwise subject to intellectual property rights of Meritage and/or others and cannot be reproduced or copied without Meritage's prior written consent. Plans and specifications, home features, and community information are subject to change, and homes to prior sale, at any time without notice or obligation. Additionally, deviations and variations may exist in any constructed home, including, without limitation: (i) substitution of materials and equipment of substantially equal or better quality; (ii) minor style, lot orientation, and color changes; (iii) minor variances in square footage and in room and space dimensions, and in window, door, utility outlet, and other improvement locations; (iv) changes as may be required by any state, federal, county, or local governmental authority in order to accommodate requested selections and/or options; and (v) value engineering and field changes.



BUILT TO INSPIRE.[®]
 MONTEREYHOMES.COM | 877-275-6374

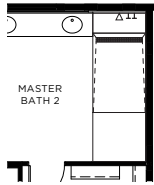


MONTEREY

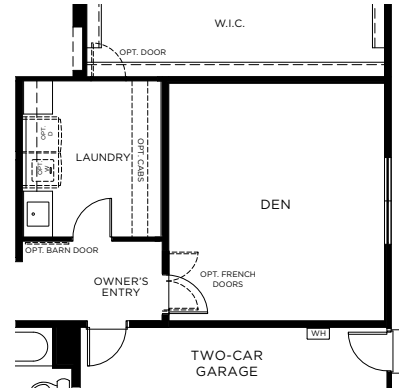
Homes



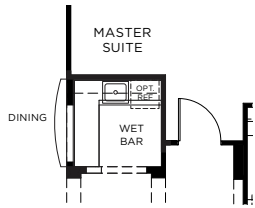
OPT. MASTER SUITE 2
ILO BEDROOMS AND BATHS 2 AND 3



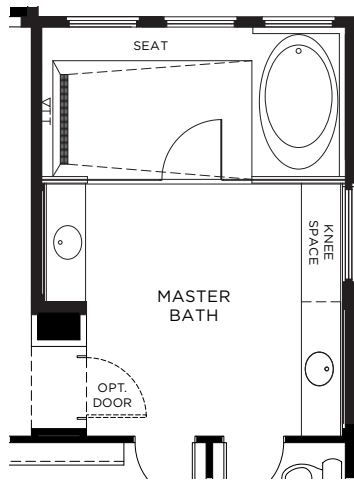
WITH OPT.
WALK-IN
SHOWER



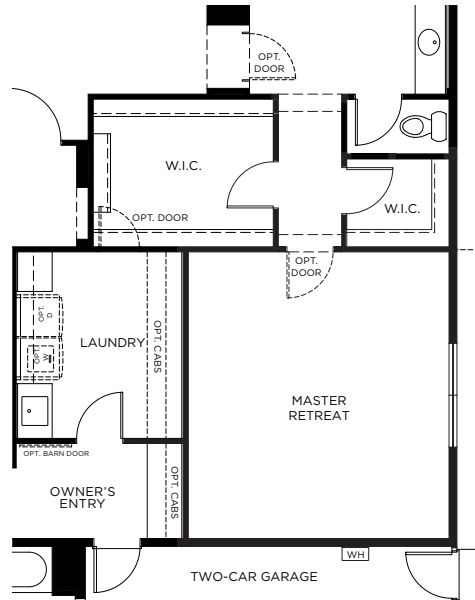
OPT. DEN
ILO TANDEM GARAGE



OPT. WET BAR
ILO POCKET OFFICE



OPT. SPA MASTER BATH



OPT. MASTER RETREAT
ILO TANDEM

Monterey at Verde River | Valencia | Options

3,452 sq. ft. | 3 Bed | 3.5 Bath | 3 Car Tandem Garage | 1 Story

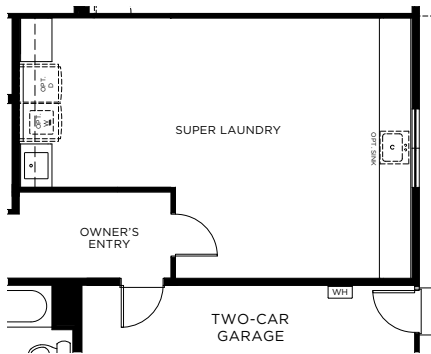
FLEX LIVING OPTIONS: Opt. Master Suite 2, Opt. Den, Opt. Wet Bar, Opt. Master Retreat, Opt. Super Laundry, Opt. 5 Car Garage, Opt. Covered Patio Extension 1 or 2, Opt. Man Cave w/Opt. Kitchen or Powder Bath

Any floorplan and/or elevation rendering is an artist's conceptual rendering intended to provide a general overview, but any such rendering does not constitute actual plans and specifications for any home. Renderings and pictures are representative and may depict floorplans, elevations, options, upgrades, landscaping, and other features and amenities that are not included as part of all homes and/or may not be available for all lots and/or in all communities. Renderings may not be drawn to scale. Any provided dimensions are approximate and actual dimensions may vary. Homes may be constructed with a floorplan that is the reverse of the floorplan rendering. Plans are copyrighted and/or otherwise subject to intellectual property rights of Meritage and/or others and cannot be reproduced or copied without Meritage's prior written consent. Plans and specifications, home features, and community information are subject to change, and homes to prior sale, at any time without notice or obligation. Additionally, deviations and variations may exist in any constructed home, including, without limitation: (i) substitution of materials and equipment of substantially equal or better quality; (ii) minor style, lot orientation, and color changes; (iii) minor variances in square footage and in room and space dimensions, and in window, door, utility outlet, and other improvement locations; (iv) changes as may be required by any state, federal, county, or local governmental authority in order to accommodate requested selections and/or options; and (v) value engineering and field changes.

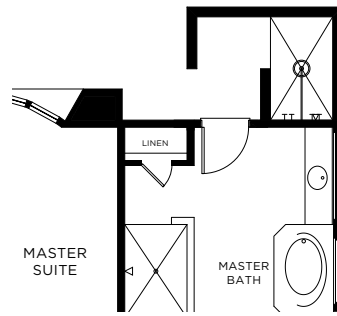


MONTEREY

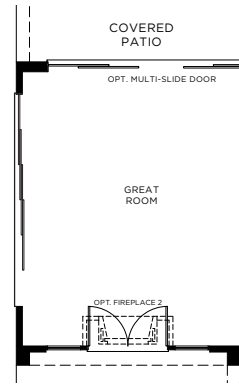
Homes



OPT. SUPER LAUNDRY
ILO TANDEM GARAGE



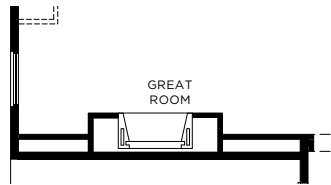
OPT. COWBOY SHOWER
AT MASTER BATH



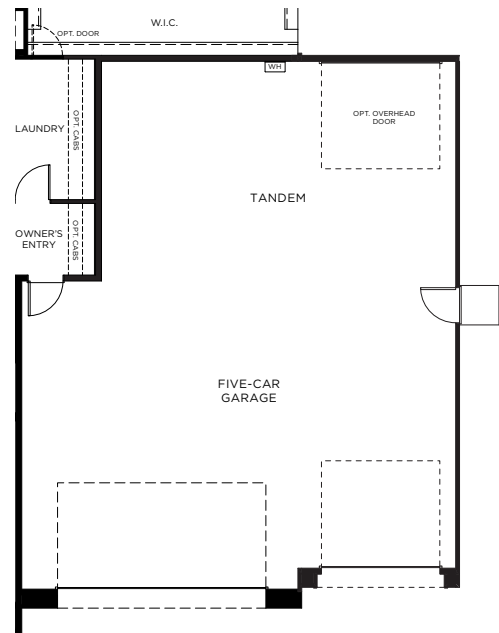
OPT. MULTI-SLIDE DOOR
AT GREAT ROOM AT
COVERED PATIO EXTENSION 2



OPT. FIREPLACE 1
AT GREAT ROOM



OPT. FIREPLACE 2
AT GREAT ROOM



OPT. FIVE-CAR GARAGE

Monterey at Verde River | Valencia | Options

3,452 sq. ft. | 3 Bed | 3.5 Bath | 3 Car Tandem Garage | 1 Story

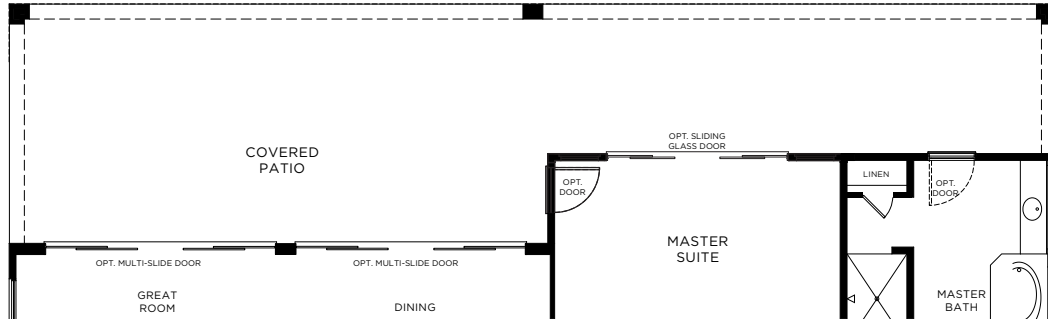
FLEX LIVING OPTIONS: Opt. Master Suite 2, Opt. Den, Opt. Wet Bar, Opt. Master Retreat, Opt. Super Laundry, Opt. 5 Car Garage, Opt. Covered Patio Extension 1 or 2, Opt. Man Cave w/Opt. Kitchen or Powder Bath

Any floorplan and/or elevation rendering is an artist's conceptual rendering intended to provide a general overview, but any such rendering does not constitute actual plans and specifications for any home. Renderings and pictures are representative and may depict floorplans, elevations, options, upgrades, landscaping, and other features and amenities that are not included as part of all homes and/or may not be available for all lots and/or in all communities. Renderings may not be drawn to scale. Any provided dimensions are approximate and actual dimensions may vary. Homes may be constructed with a floorplan that is the reverse of the floorplan rendering. Plans are copyrighted and/or otherwise subject to intellectual property rights of Meritage and/or others and cannot be reproduced or copied without Meritage's prior written consent. Plans and specifications, home features, and community information are subject to change, and homes to prior sale, at any time without notice or obligation. Additionally, deviations and variations may exist in any constructed home, including, without limitation: (i) substitution of materials and equipment of substantially equal or better quality; (ii) minor style, lot orientation, and color changes; (iii) minor variances in square footage and in room and space dimensions, and in window, door, utility outlet, and other improvement locations; (iv) changes as may be required by any state, federal, county, or local governmental authority in order to accommodate requested selections and/or options; and (v) value engineering and field changes.

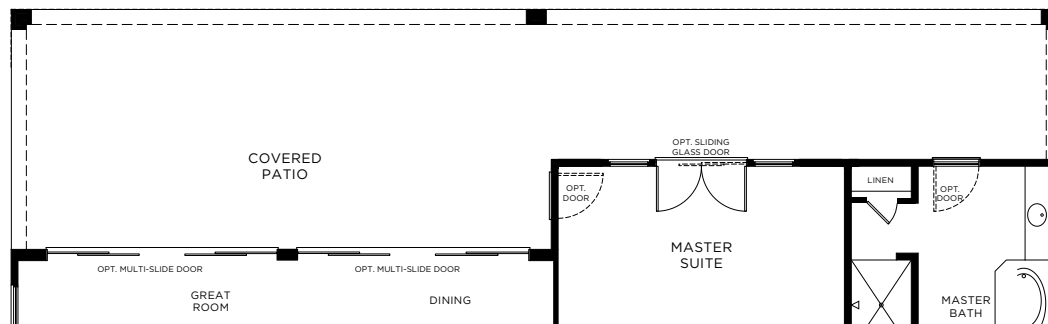


MONTEREY

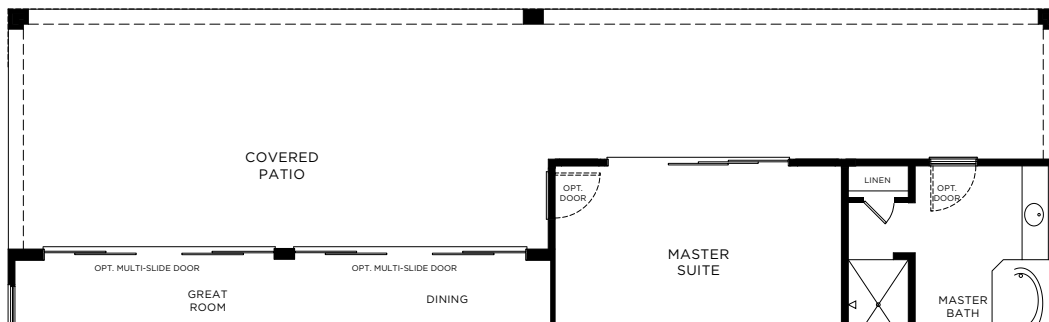
Homes



OPT. COVERED PATIO EXTENSION 1
WITH SLIDING GLASS DOOR AT MASTER SUITE



OPT. COVERED PATIO EXTENSION 1
WITH FRENCH DOOR AT MASTER SUITE



OPT. COVERED PATIO EXTENSION 1
WITH MULTI-SLIDE DOOR AT MASTER SUITE

Monterey at Verde River | Valencia | Options

3,452 sq. ft. | 3 Bed | 3.5 Bath | 3 Car Tandem Garage | 1 Story

FLEX LIVING OPTIONS: Opt. Master Suite 2, Opt. Den, Opt. Wet Bar, Opt. Master Retreat, Opt. Super Laundry, Opt. 5 Car Garage, Opt. Covered Patio Extension 1 or 2, Opt. Man Cave w/Opt. Kitchen or Powder Bath

Any floorplan and/or elevation rendering is an artist's conceptual rendering intended to provide a general overview, but any such rendering does not constitute actual plans and specifications for any home. Renderings and pictures are representative and may depict floorplans, elevations, options, upgrades, landscaping, and other features and amenities that are not included as part of all homes and/or may not be available for all lots and/or in all communities. Renderings may not be drawn to scale. Any provided dimensions are approximate and actual dimensions may vary. Homes may be constructed with a floorplan that is the reverse of the floorplan rendering. Plans are copyrighted and/or otherwise subject to intellectual property rights of Meritage and/or others and cannot be reproduced or copied without Meritage's prior written consent. Plans and specifications, home features, and community information are subject to change, and homes to prior sale, at any time without notice or obligation. Additionally, deviations and variations may exist in any constructed home, including, without limitation: (i) substitution of materials and equipment of substantially equal or better quality; (ii) minor style, lot orientation, and color changes; (iii) minor variances in square footage and in room and space dimensions, and in window, door, utility outlet, and other improvement locations; (iv) changes as may be required by any state, federal, county, or local governmental authority in order to accommodate requested selections and/or options; and (v) value engineering and field changes.





OPT. COVERED PATIO EXTENSION 2

Monterey at Verde River | Valencia | Options
3,452 sq. ft. | 3 Bed | 3.5 Bath | 3 Car Tandem Garage | 1 Story

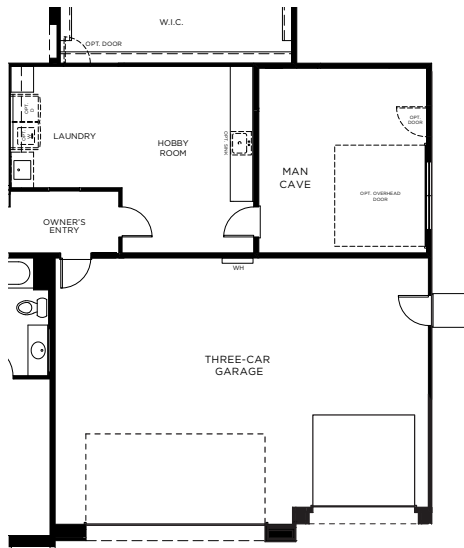
FLEX LIVING OPTIONS: Opt. Master Suite 2, Opt. Den, Opt. Wet Bar, Opt. Master Retreat, Opt. Super Laundry, Opt. 5 Car Garage, Opt. Covered Patio Extension 1 or 2, Opt. Man Cave w/Opt. Kitchen or Powder Bath

Any floorplan and/or elevation rendering is an artist's conceptual rendering intended to provide a general overview, but any such rendering does not constitute actual plans and specifications for any home. Renderings and pictures are representative and may depict floorplans, elevations, options, upgrades, landscaping, and other features and amenities that are not included as part of all homes and/or may not be available for all lots and/or in all communities. Renderings may not be drawn to scale. Any provided dimensions are approximate and actual dimensions may vary. Homes may be constructed with a floorplan that is the reverse of the floorplan rendering. Plans are copyrighted and/or otherwise subject to intellectual property rights of Meritage and/or others and cannot be reproduced or copied without Meritage's prior written consent. Plans and specifications, home features, and community information are subject to change, and homes to prior sale, at any time without notice or obligation. Additionally, deviations and variations may exist in any constructed home, including, without limitation: (i) substitution of materials and equipment of substantially equal or better quality; (ii) minor style, lot orientation, and color changes; (iii) minor variances in square footage and in room and space dimensions, and in window, door, utility outlet, and other improvement locations; (iv) changes as may be required by any state, federal, county, or local governmental authority in order to accommodate requested selections and/or options; and (v) value engineering and field changes.

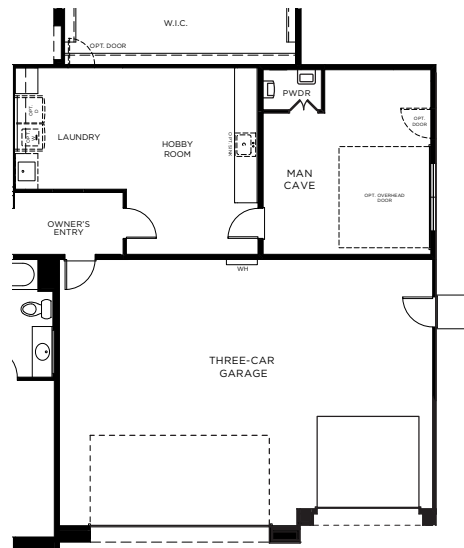


MONTEREY

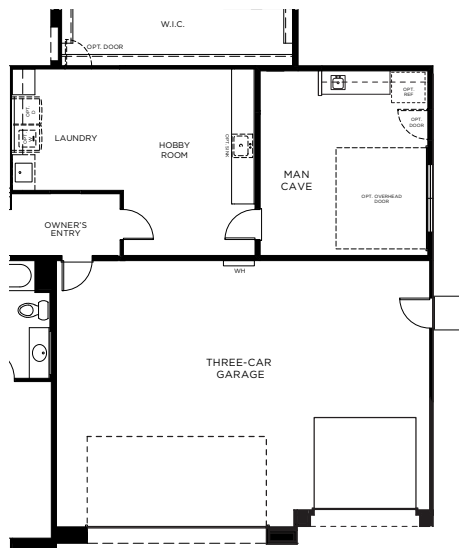
Homes



OPT. MAN CAVE WITH HOBBY ROOM AND THREE-CAR GARAGE ILO TANDEM



OPT. MAN CAVE WITH POWDER, HOBBY ROOM, AND THREE-CAR GARAGE ILO TANDEM



OPT. MAN CAVE WITH KITCHEN, HOBBY ROOM, AND THREE-CAR GARAGE ILO TANDEM

Monterey at Verde River | Valencia | Options

3,452 sq. ft. | 3 Bed | 3.5 Bath | 3 Car Tandem Garage | 1 Story

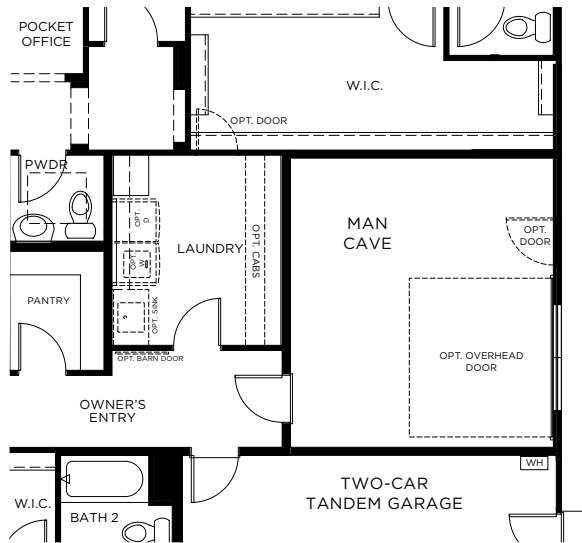
FLEX LIVING OPTIONS: Opt. Master Suite 2, Opt. Den, Opt. Wet Bar, Opt. Master Retreat, Opt. Super Laundry, Opt. 5 Car Garage, Opt. Covered Patio Extension 1 or 2, Opt. Man Cave w/Opt. Kitchen or Powder Bath

Any floorplan and/or elevation rendering is an artist's conceptual rendering intended to provide a general overview, but any such rendering does not constitute actual plans and specifications for any home. Renderings and pictures are representative and may depict floorplans, elevations, options, upgrades, landscaping, and other features and amenities that are not included as part of all homes and/or may not be available for all lots and/or in all communities. Renderings may not be drawn to scale. Any provided dimensions are approximate and actual dimensions may vary. Homes may be constructed with a floorplan that is the reverse of the floorplan rendering. Plans are copyrighted and/or otherwise subject to intellectual property rights of Meritage and/or others and cannot be reproduced or copied without Meritage's prior written consent. Plans and specifications, home features, and community information are subject to change, and homes to prior sale, at any time without notice or obligation. Additionally, deviations and variations may exist in any constructed home, including, without limitation: (i) substitution of materials and equipment of substantially equal or better quality; (ii) minor style, lot orientation, and color changes; (iii) minor variances in square footage and in room and space dimensions, and in window, door, utility outlet, and other improvement locations; (iv) changes as may be required by any state, federal, county, or local governmental authority in order to accommodate requested selections and/or options; and (v) value engineering and field changes.

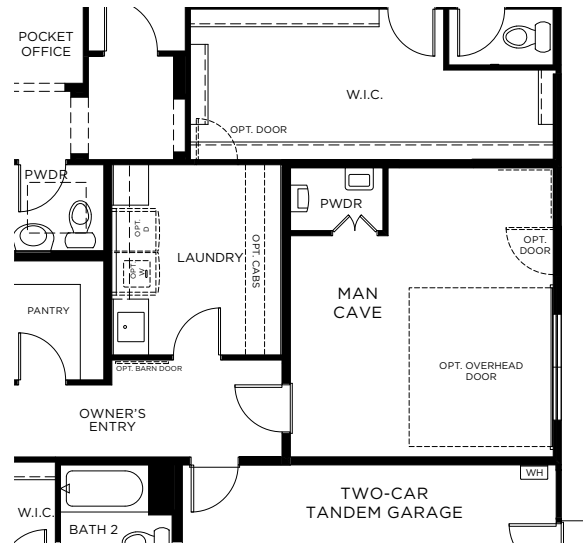


MONTEREY

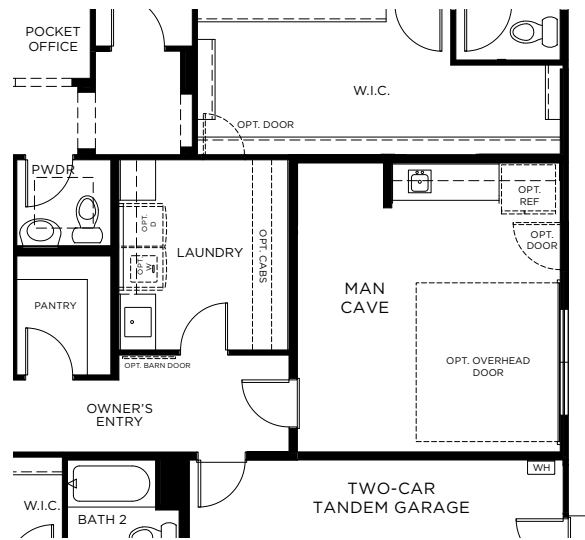
Homes



OPT. MAN CAVE
ILO TANDEM GARAGE



OPT. MAN CAVE WITH POWDER
ILO TANDEM GARAGE



OPT. MAN CAVE WITH KITCHEN
ILO TANDEM GARAGE

Monterey at Verde River | Valencia | Options

3,452 sq. ft. | 3 Bed | 3.5 Bath | 3 Car Tandem Garage | 1 Story

FLEX LIVING OPTIONS: Opt. Master Suite 2, Opt. Den, Opt. Wet Bar, Opt. Master Retreat, Opt. Super Laundry, Opt. 5 Car Garage, Opt. Covered Patio Extension 1 or 2, Opt. Man Cave w/Opt. Kitchen or Powder Bath

Any floorplan and/or elevation rendering is an artist's conceptual rendering intended to provide a general overview, but any such rendering does not constitute actual plans and specifications for any home. Renderings and pictures are representative and may depict floorplans, elevations, options, upgrades, landscaping, and other features and amenities that are not included as part of all homes and/or may not be available for all lots and/or in all communities. Renderings may not be drawn to scale. Any provided dimensions are approximate and actual dimensions may vary. Homes may be constructed with a floorplan that is the reverse of the floorplan rendering. Plans are copyrighted and/or otherwise subject to intellectual property rights of Meritage and/or others and cannot be reproduced or copied without Meritage's prior written consent. Plans and specifications, home features, and community information are subject to change, and homes to prior sale, at any time without notice or obligation. Additionally, deviations and variations may exist in any constructed home, including, without limitation: (i) substitution of materials and equipment of substantially equal or better quality; (ii) minor style, lot orientation, and color changes; (iii) minor variances in square footage and in room and space dimensions, and in window, door, utility outlet, and other improvement locations; (iv) changes as may be required by any state, federal, county, or local governmental authority in order to accommodate requested selections and/or options; and (v) value engineering and field changes.

