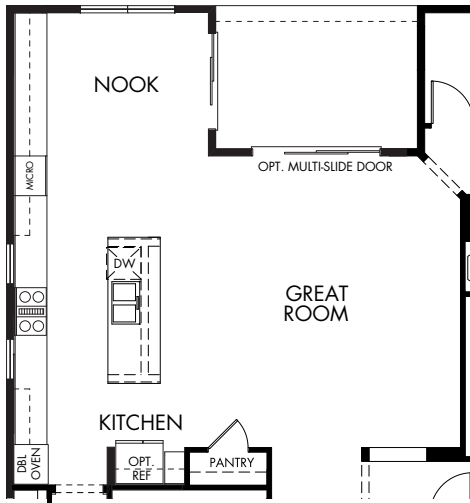


**Cadiz at Sedella | Sierra**  
**2,415 sq. ft. | 4 Bed | 3 Bath | 3 Car Tandem Garage | 1 Story**

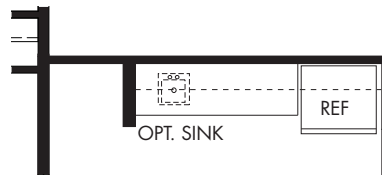
REV 01/18

**FLEX LIVING OPTIONS:** Opt. Covered Patio Extension, Opt. Home Office, Opt. Butler's Pantry, Opt. Man Cave Garage w/Opt. Powder Bath or Kitchenette, Opt. Outdoor Living Kitchen or Fireplace, Opt. 2' Garage Extension

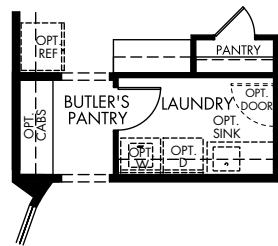
Any floorplan and/or elevation rendering is an artist's conceptual rendering intended to provide a general overview, but any such rendering does not constitute actual plans and specifications for any home. Renderings and pictures are representative and may depict floorplans, elevations, options, upgrades, landscaping, and other features and amenities that are not included as part of all homes and/or may not be available for all lots and/or in all communities. Renderings may not be drawn to scale. Any provided dimensions are approximate and actual dimensions may vary. Homes may be constructed with a floorplan that is the reverse of the floorplan rendering. Plans are copyrighted and/or otherwise subject to intellectual property rights of Meritage and/or others and cannot be reproduced or copied without Meritage's prior written consent. Plans and specifications, home features, and community information are subject to change, and homes to prior sale, at any time without notice or obligation. Additionally, deviations and variations may exist in any constructed home, including, without limitation: (i) substitution of materials and equipment of substantially equal or better quality; (ii) minor style, lot orientation, and color changes; (iii) minor variances in square footage and in room and space dimensions, and in window, door, utility outlet, and other improvement locations; (iv) changes as may be required by any state, federal, county, or local governmental authority in order to accommodate requested selections and/or options; and (v) value engineering and field changes.



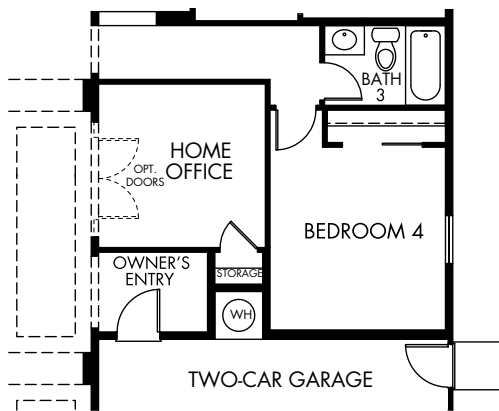
OPT. DESIGNER KITCHEN



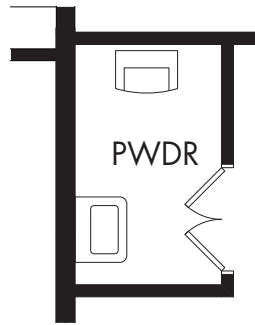
OPT. MAN CAVE GARAGE KITCHENETTE



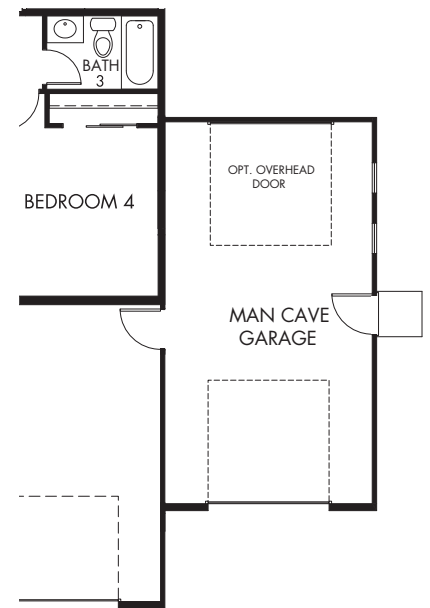
OPT. BUTLER'S PANTRY



OPT. HOME OFFICE ILO TANDEM GARAGE



OPT. MAN CAVE GARAGE POWDER BATH



OPT. MAN CAVE GARAGE

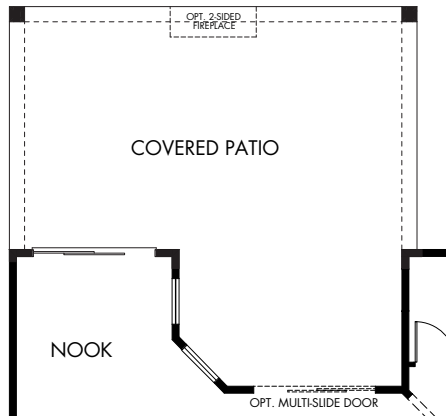
**Cadiz at Sedella | Sierra | Options**

**2,415 sq. ft. | 4 Bed | 3 Bath | 3 Car Tandem Garage | 1 Story**

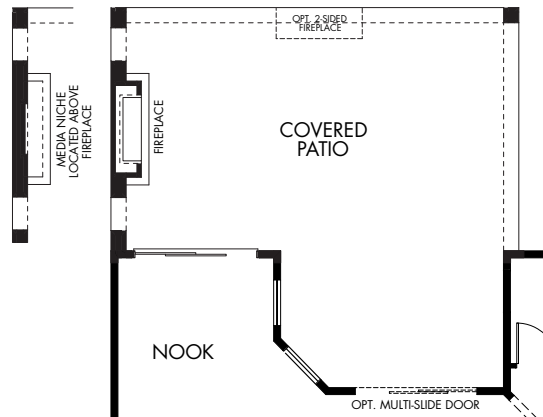
REV 01/18

**FLEX LIVING OPTIONS:** Opt. Covered Patio Extension, Opt. Home Office, Opt. Butler's Pantry, Opt. Man Cave Garage w/Opt. Powder Bath or Kitchenette, Opt. Outdoor Living Kitchen or Fireplace, Opt. 2' Garage Extension

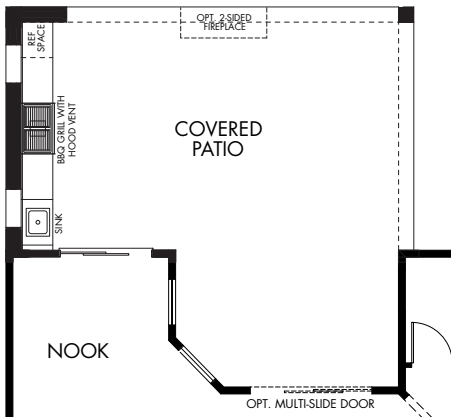
Any floorplan and/or elevation rendering is an artist's conceptual rendering intended to provide a general overview, but any such rendering does not constitute actual plans and specifications for any home. Renderings and pictures are representative and may depict floorplans, elevations, options, upgrades, landscaping, and other features and amenities that are not included as part of all homes and/or may not be available for all lots and/or in all communities. Renderings may not be drawn to scale. Any provided dimensions are approximate and actual dimensions may vary. Homes may be constructed with a floorplan that is the reverse of the floorplan rendering. Plans are copyrighted and/or otherwise subject to intellectual property rights of Meritage and/or others and cannot be reproduced or copied without Meritage's prior written consent. Plans and specifications, home features, and community information are subject to change, and homes to prior sale, at any time without notice or obligation. Additionally, deviations and variations may exist in any constructed home, including, without limitation: (i) substitution of materials and equipment of substantially equal or better quality; (ii) minor style, lot orientation, and color changes; (iii) minor variances in square footage and in room and space dimensions, and in window, door, utility outlet, and other improvement locations; (iv) changes as may be required by any state, federal, county, or local governmental authority in order to accommodate requested selections and/or options; and (v) value engineering and field changes.



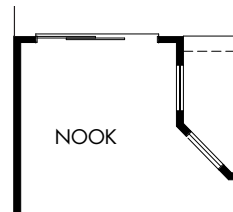
OPT. COVERED PATIO  
EXTENSION



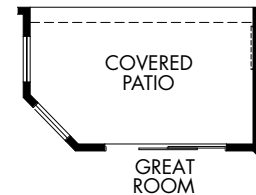
OPT. FIREPLACE AT OUTDOOR LIVING



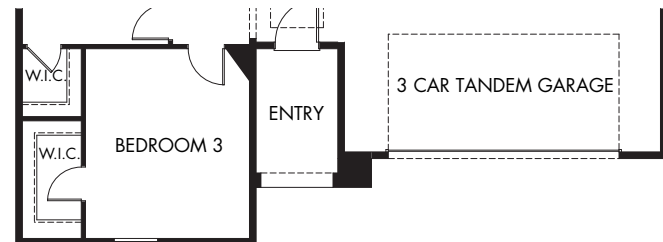
OPT. OUTDOOR LIVING KITCHEN



OPT. SLIDING GLASS DOOR  
AT NOOK



OPT. MULTI-SLIDE DOOR  
AT GREAT ROOM



OPT. 2' GARAGE EXTENSION

**Cadiz at Sedella | Sierra | Options**  
**2,415 sq. ft. | 4 Bed | 3 Bath | 3 Car Tandem Garage | 1 Story**

REV 01/18

**FLEX LIVING OPTIONS:** Opt. Covered Patio Extension, Opt. Home Office, Opt. Butler's Pantry, Opt. Man Cave Garage w/Opt. Powder Bath or Kitchenette, Opt. Outdoor Living Kitchen or Fireplace, Opt. 2' Garage Extension

Any floorplan and/or elevation rendering is an artist's conceptual rendering intended to provide a general overview, but any such rendering does not constitute actual plans and specifications for any home. Renderings and pictures are representative and may depict floorplans, elevations, options, upgrades, landscaping, and other features and amenities that are not included as part of all homes and/or may not be available for all lots and/or in all communities. Renderings may not be drawn to scale. Any provided dimensions are approximate and actual dimensions may vary. Homes may be constructed with a floorplan that is the reverse of the floorplan rendering. Plans and specifications, home features, and community information are subject to change, and homes to prior sale, at any time without notice or obligation. Additionally, deviations and variations may exist in any constructed home, including, without limitation: (i) substitution of materials and equipment of substantially equal or better quality; (ii) minor style, lot orientation, and color changes; (iii) minor variances in square footage and in room and space dimensions, and in window, door, utility outlet, and other improvement locations; (iv) changes as may be required by any state, federal, county, or local governmental authority in order to accommodate requested selections and/or options; and (v) value engineering and field changes.