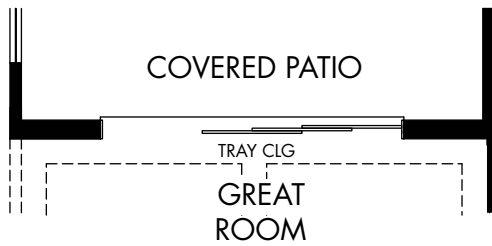


**Almeria at Sedella | Cheyenne**  
**3,108 sq. ft. | 4 Bed | 3.5 Bath | 3 Car Garage | 1 Story**

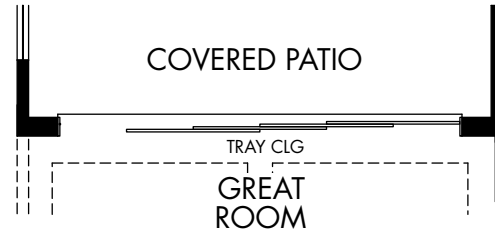
REV 04/18

**FLEX LIVING OPTIONS:** Opt. Fireplace at Great Room, Opt. RV Garage w/Opt. Bath & Kitchenette, Opt. Party or Family Cabana

Any floorplan and/or elevation rendering is an artist's conceptual rendering intended to provide a general overview, but any such rendering does not constitute actual plans and specifications for any home. Renderings and pictures are representative and may depict floorplans, elevations, options, upgrades, landscaping, and other features and amenities that are not included as part of all homes and/or may not be available for all lots and/or in all communities. Renderings may not be drawn to scale. Any provided dimensions are approximate and actual dimensions may vary. Homes may be constructed with a floorplan that is the reverse of the floorplan rendering. Plans are copyrighted and/or otherwise subject to intellectual property rights of Meritage and/or others and cannot be reproduced or copied without Meritage's prior written consent. Plans and specifications, home features, and community information are subject to change, and homes to prior sale, at any time without notice or obligation. Additionally, deviations and variations may exist in any constructed home, including, without limitation: (i) substitution of materials and equipment of substantially equal or better quality; (ii) minor style, lot orientation, and color changes; (iii) minor variances in square footage and in room and space dimensions, and in window, door, utility outlet, and other improvement locations; (iv) changes as may be required by any state, federal, county, or local governmental authority in order to accommodate requested selections and/or options; and (v) value engineering and field changes.



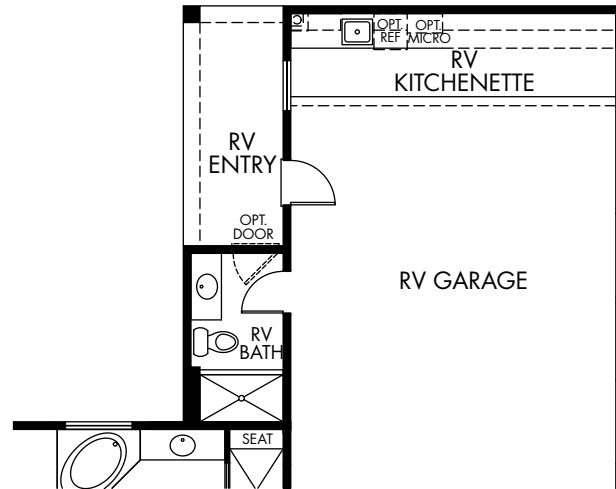
OPT. MULTI-SLIDE DOOR AT GREAT ROOM



OPT. 16080 MULTI-SLIDE DOOR AT GREAT ROOM



OPT. FIREPLACE AT GREAT ROOM



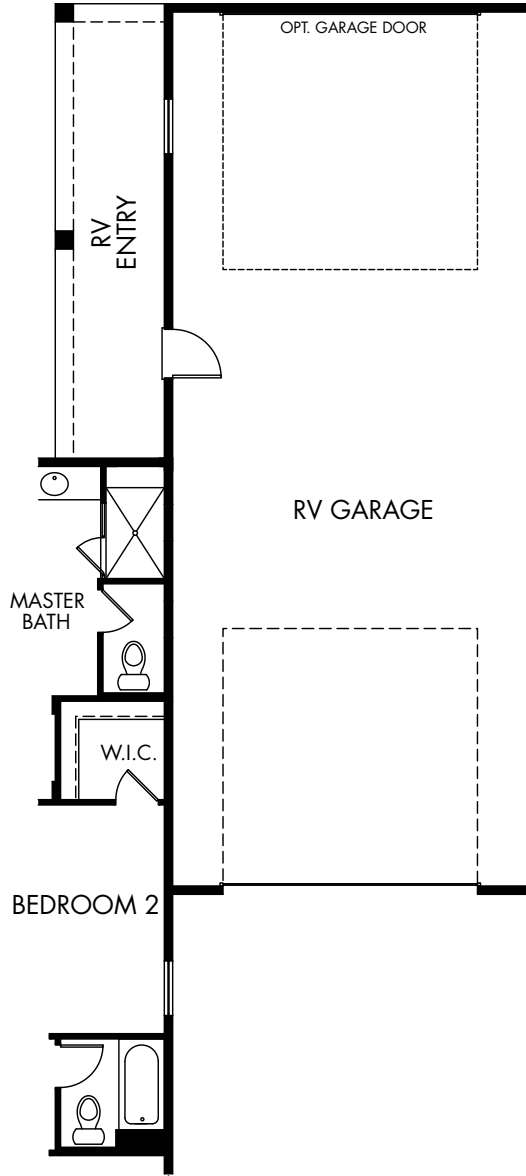
OPT. BATH AND KITCHENETTE AT RV GARAGE

**Almeria at Sedella | Cheyenne | Options**  
**3,108 sq. ft. | 4 Bed | 3.5 Bath | 3 Car Garage | 1 Story**

REV 04/18

**FLEX LIVING OPTIONS:** Opt. Fireplace at Great Room, Opt. RV Garage w/Opt. Bath & Kitchenette, Opt. Party or Family Cabana

Any floorplan and/or elevation rendering is an artist's conceptual rendering intended to provide a general overview, but any such rendering does not constitute actual plans and specifications for any home. Renderings and pictures are representative and may depict floorplans, elevations, options, upgrades, landscaping, and other features and amenities that are not included as part of all homes and/or may not be available for all lots and/or in all communities. Renderings may not be drawn to scale. Any provided dimensions are approximate and actual dimensions may vary. Homes may be constructed with a floorplan that is the reverse of the floorplan rendering. Plans are copyrighted and/or otherwise subject to intellectual property rights of Meritage and/or others and cannot be reproduced or copied without Meritage's prior written consent. Plans and specifications, home features, and community information are subject to change, and homes to prior sale, at any time without notice or obligation. Additionally, deviations and variations may exist in any constructed home, including, without limitation: (i) substitution of materials and equipment of substantially equal or better quality; (ii) minor style, lot orientation, and color changes; (iii) minor variances in square footage and in room and space dimensions, and in window, door, utility outlet, and other improvement locations; (iv) changes as may be required by any state, federal, county, or local governmental authority in order to accommodate requested selections and/or options; and (v) value engineering and field changes.



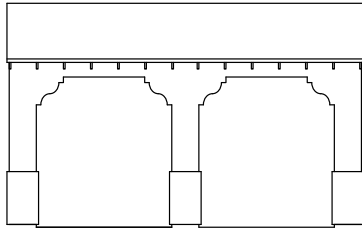
OPT. RV GARAGE

**Almeria at Sedella | Cheyenne | Options**  
**3,108 sq. ft. | 4 Bed | 3.5 Bath | 3 Car Garage | 1 Story**

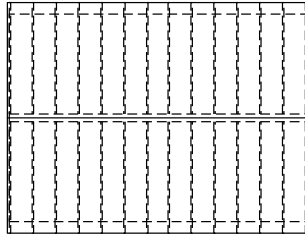
REV 04/18

**FLEX LIVING OPTIONS:** Opt. Fireplace at Great Room, Opt. RV Garage w/Opt. Bath & Kitchenette, Opt. Party or Family Cabana

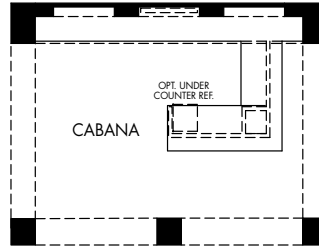
Any floorplan and/or elevation rendering is an artist's conceptual rendering intended to provide a general overview, but any such rendering does not constitute actual plans and specifications for any home. Renderings and pictures are representative and may depict floorplans, elevations, options, upgrades, landscaping, and other features and amenities that are not included as part of all homes and/or may not be available for all lots and/or in all communities. Renderings may not be drawn to scale. Any provided dimensions are approximate and actual dimensions may vary. Homes may be constructed with a floorplan that is the reverse of the floorplan rendering. Plans are copyrighted and/or otherwise subject to intellectual property rights of Meritage and/or others and cannot be reproduced or copied without Meritage's prior written consent. Plans and specifications, home features, and community information are subject to change, and homes to prior sale, at any time without notice or obligation. Additionally, deviations and variations may exist in any constructed home, including, without limitation: (i) substitution of materials and equipment of substantially equal or better quality; (ii) minor style, lot orientation, and color changes; (iii) minor variances in square footage and in room and space dimensions, and in window, door, utility outlet, and other improvement locations; (iv) changes as may be required by any state, federal, county, or local governmental authority in order to accommodate requested selections and/or options; and (v) value engineering and field changes.



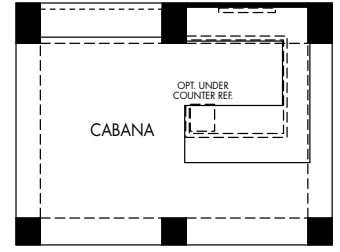
OPT. ELEVATION E CABANA FRONT



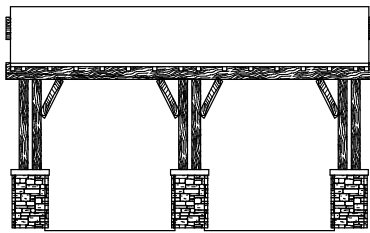
OPT. ELEVATION E CABANA ROOF



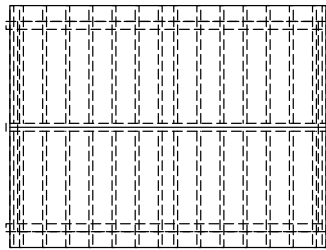
OPT. ELEVATION E PARTY CABANA FLOOR PLAN



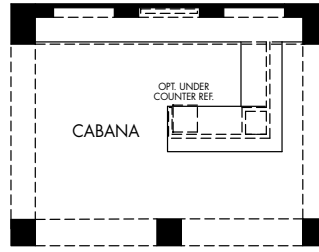
OPT. ELEVATION E FAMILY CABANA FLOOR PLAN



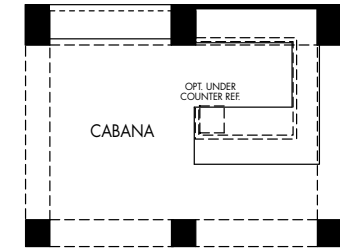
OPT. ELEVATION F CABANA FRONT



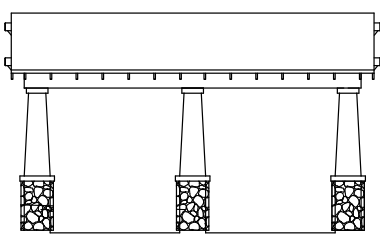
OPT. ELEVATION F CABANA ROOF



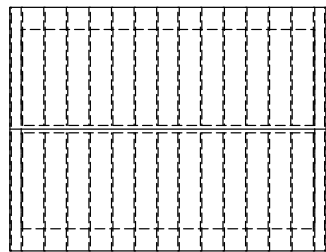
OPT. ELEVATION F PARTY CABANA FLOOR PLAN



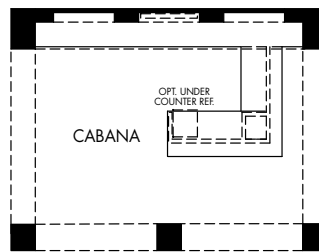
OPT. ELEVATION F FAMILY CABANA FLOOR PLAN



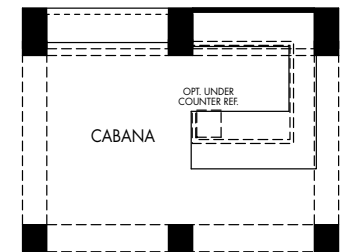
OPT. ELEVATION G CABANA FRONT



OPT. ELEVATION G CABANA ROOF



OPT. ELEVATION G PARTY CABANA FLOOR PLAN



OPT. ELEVATION G FAMILY CABANA FLOOR PLAN

**Almeria at Sedella | Cheyenne | Optional Cabanas**  
**3,108 sq. ft. | 4 Bed | 3.5 Bath | 3 Car Garage | 1 Story**

REV 04/18

**FLEX LIVING OPTIONS:** Opt. Fireplace at Great Room, Opt. RV Garage w/Opt. Bath & Kitchenette, Opt. Party or Family Cabana

Any floorplan and/or elevation rendering is an artist's conceptual rendering intended to provide a general overview, but any such rendering does not constitute actual plans and specifications for any home. Renderings and pictures are representative and may depict floorplans, elevations, options, upgrades, landscaping, and other features and amenities that are not included as part of all homes and/or may not be available for all lots and/or in all communities. Renderings may not be drawn to scale. Any provided dimensions are approximate and actual dimensions may vary. Homes may be constructed with a floorplan that is the reverse of the floorplan rendering. Plans are copyrighted and/or otherwise subject to intellectual property rights of Meritage and/or others and cannot be reproduced or copied without Meritage's prior written consent. Plans and specifications, home features, and community information are subject to change, and homes to prior sale, at any time without notice or obligation. Additionally, deviations and variations may exist in any constructed home, including, without limitation: (i) substitution of materials and equipment of substantially equal or better quality; (ii) minor style, lot orientation, and color changes; (iii) minor variances in square footage and in room and space dimensions, and in window, door, utility outlet, and other improvement locations; (iv) changes as may be required by any state, federal, county, or local governmental authority in order to accommodate requested selections and/or options; and (v) value engineering and field changes.