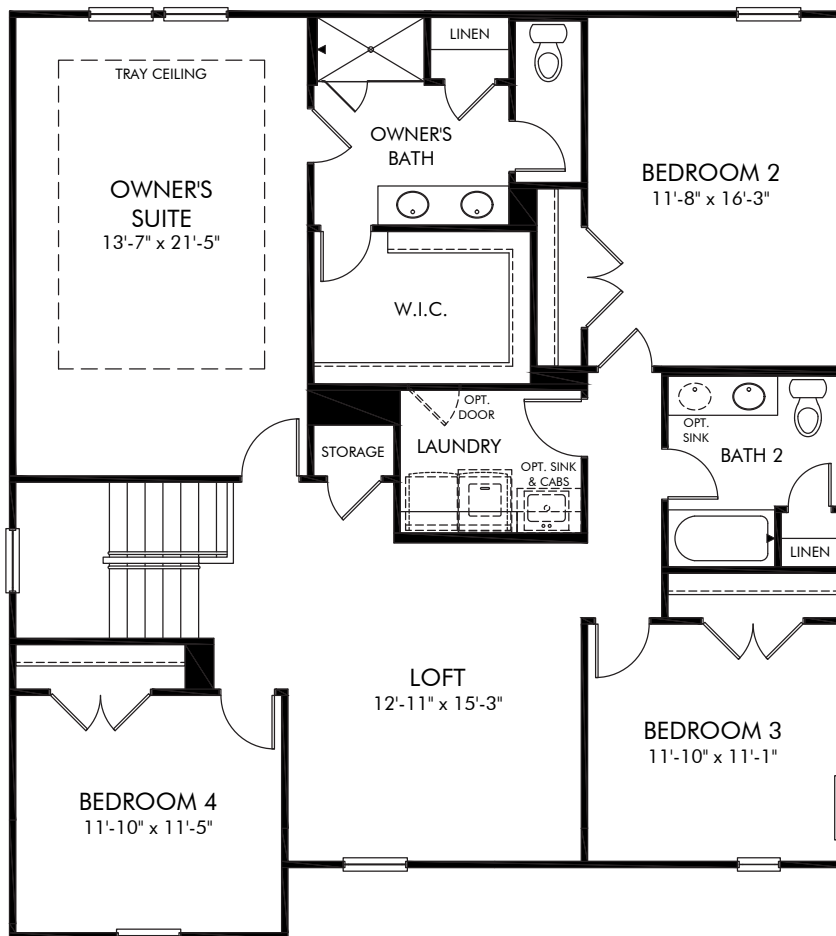


Carson Creek | Chastain/Plan 481 | First Floor
2,759 sq. ft. | 4 Bed | 2.5 Bath | 3 Car Garage | 2 Story

REV 07/19

FLEX LIVING OPTIONS: Opt. Gourmet Kitchen, Opt. Owner's Bath 1 or 2, Opt. Study, Opt. Bedroom 5 & Bath 4, Opt. Bath 3, Opt. Bedroom 6, Opt. Covered Patio/Deck, Opt. Screened Porch, Opt. Sunroom

Any floorplan and/or elevation rendering is an artist's conceptual rendering intended to provide a general overview, but any such rendering does not constitute actual plans and specifications for any home. Renderings and pictures are representative and may depict floorplans, elevations, options, upgrades, landscaping, and other features and amenities that are not included as part of all homes and/or may not be available for all lots and/or in all communities. Renderings may not be drawn to scale. Any provided dimensions are approximate and actual dimensions may vary. Homes may be constructed with a floorplan that is the reverse of the floorplan rendering. Plans are copyrighted and/or otherwise subject to intellectual property rights of Meritage and/or others and cannot be reproduced or copied without Meritage's prior written consent. Plans and specifications, home features, and community information are subject to change, and homes to prior sale, at any time without notice or obligation. Additionally, deviations and variations may exist in any constructed home, including, without limitation: (i) substitution of materials and equipment of substantially equal or better quality; (ii) minor style, lot orientation, and color changes; (iii) minor variances in square footage and in room and space dimensions, and in window, door, utility outlet, and other improvement locations; (iv) changes as may be required by any state, federal, county, or local governmental authority in order to accommodate requested selections and/or options; and (v) value engineering and field changes.



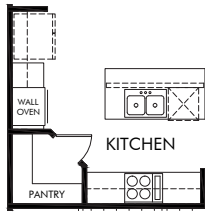
Carson Creek | Chastain/Plan 481 | Second Floor

2,759 sq. ft. | 4 Bed | 2.5 Bath | 3 Car Garage | 2 Story

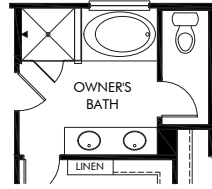
REV 07/19

FLEX LIVING OPTIONS: Opt. Gourmet Kitchen, Opt. Owner's Bath 1 or 2, Opt. Study, Opt. Bedroom 5 & Bath 4, Opt. Bath 3, Opt. Bedroom 6, Opt. Covered Patio/Deck, Opt. Screened Porch, Opt. Sunroom

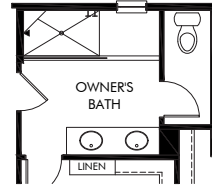
Any floorplan and/or elevation rendering is an artist's conceptual rendering intended to provide a general overview, but any such rendering does not constitute actual plans and specifications for any home. Renderings and pictures are representative and may depict floorplans, elevations, options, upgrades, landscaping, and other features and amenities that are not included as part of all homes and/or may not be available for all lots and/or in all communities. Renderings may not be drawn to scale. Any provided dimensions are approximate and actual dimensions may vary. Homes may be constructed with a floorplan that is the reverse of the floorplan rendering. Plans are copyrighted and/or otherwise subject to intellectual property rights of Meritage and/or others and cannot be reproduced or copied without Meritage's prior written consent. Plans and specifications, home features, and community information are subject to change, and homes to prior sale, at any time without notice or obligation. Additionally, deviations and variations may exist in any constructed home, including, without limitation: (i) substitution of materials and equipment of substantially equal or better quality; (ii) minor style, lot orientation, and color changes; (iii) minor variances in square footage and in room and space dimensions, and in window, door, utility outlet, and other improvement locations; (iv) changes as may be required by any state, federal, county, or local governmental authority in order to accommodate requested selections and/or options; and (v) value engineering and field changes.



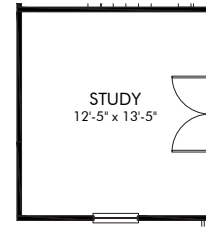
OPT. GOURMET KITCHEN



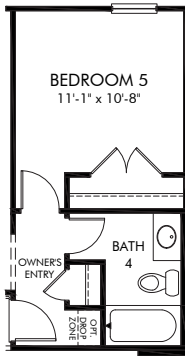
OPT. OWNER'S BATH 1



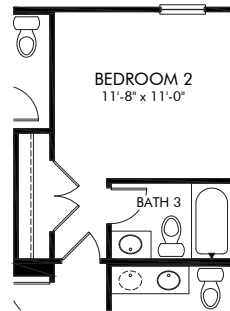
OPT. OWNER'S BATH 2



OPT. STUDY



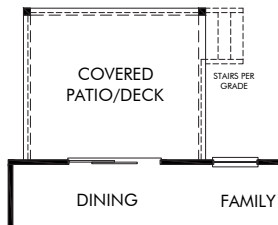
OPT. BEDROOM 5 & BATH 4



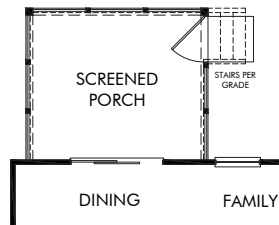
OPT. BATH 3



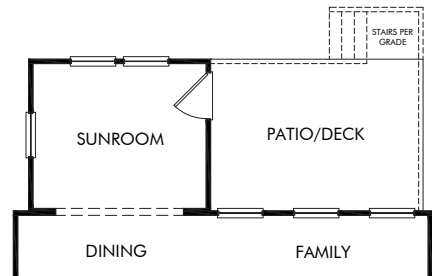
OPT. BEDROOM 6



OPT. COVERED PATIO/DECK



OPT. SCREENED PORCH



OPT. SUNROOM

Carson Creek | Chastain/Plan 481 | Options
2,759 sq. ft. | 4 Bed | 2.5 Bath | 3 Car Garage | 2 Story

REV 07/19

FLEX LIVING OPTIONS: Opt. Gourmet Kitchen, Opt. Owner's Bath 1 or 2, Opt. Study, Opt. Bedroom 5 & Bath 4, Opt. Bath 3, Opt. Bedroom 6, Opt. Covered Patio/Deck, Opt. Screened Porch, Opt. Sunroom

Any floorplan and/or elevation rendering is an artist's conceptual rendering intended to provide a general overview, but any such rendering does not constitute actual plans and specifications for any home. Renderings and pictures are representative and may depict floorplans, elevations, options, upgrades, landscaping, and other features and amenities that are not included as part of all homes and/or may not be available for all lots and/or in all communities. Renderings may not be drawn to scale. Any provided dimensions are approximate and actual dimensions may vary. Homes may be constructed with a floorplan that is the reverse of the floorplan rendering. Plans are copyrighted and/or otherwise subject to intellectual property rights of Meritage and/or others and cannot be reproduced or copied without Meritage's prior written consent. Plans and specifications, home features, and community information are subject to change, and homes to prior sale, at any time without notice or obligation. Additionally, deviations and variations may exist in any constructed home, including, without limitation: (i) substitution of materials and equipment of substantially equal or better quality; (ii) minor style, lot orientation, and color changes; (iii) minor variances in square footage and in room and space dimensions, and in window, door, utility outlet, and other improvement locations; (iv) changes as may be required by any state, federal, county, or local governmental authority in order to accommodate requested selections and/or options; and (v) value engineering and field changes.